

Nursing Supply Projections

Introduction and Executive Summary

This report was prepared for the Tennessee Healthcare Consortium on Nursing. The report shows the supply of Registered Nurses in Tennessee in a variety of practice areas. Nursing supply is forecasted for the years 1999 – 2020.

The base model used was the Nursing Supply Model and Computer Program SPLMDL96, produced by the Division of Nursing, Bureau of Health Professions, Health Resources and Services Administration, U.S. Dept. of Health and Human Services.¹ The model used 1995 data to predict the supply of Registered nurses from 1996-2020. In this study, the data was updated using the most recent data sources to result in the most accurate supply forecast possible for the period 2000-2020.

The model predicts the RN population, RN supply, and FTE RN supply for the future years. The RN population is expected to increase from 55,756 in 2000 to 67,254 in 2020 (21%). The RN supply is expected to increase from 49,583 to 55,975 (13%). The FTE supply is expected to increase from 44,988 to 50,937 (13%). Table 1 shows the year by year increase, tables 2-4 show the data by age group for 2000,2005, 2010, 2015, and 2020. Tables 5-67 show detail information by age and educational preparation for each year of the projection.

One shortcoming in the model is that it cannot take into account influences that may play a part in inducing more, or less, of the population to go into nursing. These influences include salary considerations, recruiting programs, and general economic trends. A second problem was encountered entering updated population projections, explained later, which may have caused a slightly conservative estimate.

Overall, this forecast, which uses an accepted forecasting model and the most recent valid data available, provides a well grounded, realistic estimation of the number of registered nurses that will be available in Tennessee over the next two decades.

¹ The computer based model, software, and documentation is available from the National Technical Information Service, Springfield, VA 22151. <http://www.ntis.gov>.

Methodology

Nursing Supply Model and Computer Program SPLMDL96 (SPLMDL96)

Development of this model began in the 1970's; data and forecasts using various versions of the model began in 1982. The model uses the National Sample Survey of Registered Nurses and population estimates as its input for forecasting the future supply of RNs.

The model is available as a PC based computer program, along with the layout for all the input files that are available for editing. The program is delivered with 1995 data from the National Sample Survey of Registered Nurses and population forecasts. Although not user friendly, the data can be updated with more current data and new RN supply models can be run.

SPLMDL96 Analytical Procedure

The model uses a base year of nursing data to predict RN populations through future years. General population projections for the period studied are a second source of data. Other calculations and projections developed independently are also used in the forecast (mortality rates, licensing rates). Complete details of the analytical model are available in the manual accompanying the software.

The model produces three projections for the RN population. The manual defines these projections as:

1. State Nurse population; i.e., all registered nurses having a current license to practice somewhere in the United States and who are employed in the state or, if not employed in nursing, reside in the state;
2. State Nurse Supply; i.e., the part of the state nurse population which is employed in nursing or available for employment in nursing; and
3. State full-time equivalent supply, i.e., the state nurse supply on the basis of its relationship to the full-time employment.

SPLMDL96 Input files

The purpose of this project was to modify the model with the latest data available to update the projections of the RN supply. The model purported to be amenable to

modification; however, the layout of the data files made this a difficult, but not impossible, proposition. Two datasets could be modified within the model- RN population and the general population projections.

RN Population

The RN population in the original model used the National Sample Survey of Registered Nurses, 1996, to estimate the number of RNs in each state in each age group. There were seventy overlapping age groups with three nursing degree groups within each age group (AD/Diploma, baccalaureate, and master's and above).

March 2001 data from the RN license file was used to update the data. The license file was imported into a database and queries and calculations were used to process the data into the 210 aggregate groups needed for the model.

The model read the 2001 RN licensure file data as though it were baseline 1999 data. Although this probably resulted in a slight overstatement of the supply of RNs throughout the years, it was necessary because the same 2001 data was used for the Nursing demand model that also used 1999 as the baseline year.²

General Population

The model used population estimates from the year 1995 through 2020. These files were updated with current U.S. census projections from the same period.

The data layout was 1300 rows of data, with year one of data for each state, D.C. and the U.S. in rows 1-52, unmarked and in alphabetical order, then the same order for year 2 in rows 53-104, and so on. Although this made for difficult modification of the data, the new information was entered.

The model's manual was unclear as to how the population data would be treated when a new base year (1999) was used. Population data was entered for the years 1995- 2020. It was assumed that the model would account for the difference between the base year and the population year. If the model does not account for the difference, then the projections are underestimated.

² It should be noted that in both this supply model and the demand model, and in the original models before updating, the data is not consistent with regard to baseline year. In the demand model, the majority of the data came from 1999 data sources, except for the nurse license file.

Other data files

Other data files were used in the analysis. These included migration rates, predicting movement between states, mortality rates, and licensing rates (the number of newly licensed nurses projected). These data files were not changed.

Two additional data files which projected the number of basic and advanced graduates from nursing programs were based on past graduation data (pre 1996) and were not updated. These files were not updated for two reasons- historical data was only available for 5 years (1996-2000) at the time of this project. More importantly, the model did not explain the method used to project graduation rates within the dataset. Future use of this model should note the value of updating the projected graduation dates for a more accurate supply forecasts.

Results

Table 1 shows the overall results of the study for total RNs. Figure 1 shows this data graphically. Although the population of RNs grows rapidly and steadily, the supply and FTE supply do not keep pace. The reason for this may be the aging of the RN population. RNs by age are shown in tables 2-4 and Figures 2-11.

The data show that population, supply, and FTE supply parallel and are close for the under thirty age groups. After age thirty, the gap between the population, supply, and FTE supply grows. At the age of sixty and above the gap between the population and the other groups expands dramatically, reflecting that fact that nurses drop out of the workforce as they grow older.

Tables 5-67 detail the results by age group and educational status for each year. One anomaly should be noted. In the age groups starting with 65-69, RN supply and FTE RN supply increase in some categories and age groups and not in others. For example, the baccalaureate RN supply in the 65-69 age group is 0 for all years, while the baccalaureate RN supply in the 70-74 age group increases from year to year. This anomaly was also present in the model using the original data before updating. It is probably due to an activity rate variable supplied by the model.

Beginning in 2005, the aging of the nursing population is seen. More nurses move into the fifty and older age group. This trend continues in 2010 with more nurses moving into the sixty and older age groups. Overall, the RN population and workforce is shown to be aging over the next two decades.

Table 1. RN population, 2000-2020

<u>Year</u>	<u>RN Population</u>	<u>RN Supply</u>	<u>RN FTE Supply</u>
2000	55,756	49,583	44,988
2001	57,212	50,684	46,095
2002	58,494	51,642	46,924
2003	59,694	52,588	47,732
2004	60,783	53,375	48,390
2005	61,725	53,915	48,964
2006	62,646	54,487	49,612
2007	63,461	55,048	50,218
2008	64,179	55,570	50,637
2009	64,801	56,042	50,978
2010	65,278	56,263	51,126
2011	65,750	56,399	51,321
2012	66,058	56,331	51,285
2013	66,327	56,316	51,300
2014	66,581	56,292	51,267
2015	66,859	56,372	51,288
2016	67,051	56,420	51,270
2017	67,006	56,241	51,077
2018	67,084	56,156	51,008
2019	67,203	56,094	51,006
2020	67,254	55,975	50,937

Table 2. RN population by age group, 2000-2020

<u>Age Group</u>	<u>2000</u>	<u>2005</u>	<u>2010</u>	<u>2015</u>	<u>2020</u>
20-24	1,337	1,301	1,333	1,377	1,382
25-29	4,688	3,809	3,932	4,087	4,182
30-34	6,966	5,999	5,420	5,585	5,747
35-39	8,148	8,125	7,414	7,026	7,205
40-44	9,339	9,144	9,151	8,599	8,320
45-49	10,112	9,872	9,727	9,734	9,276
50-54	7,132	10,459	10,275	10,116	10,135
55-59	4,205	7,161	10,288	10,128	9,961
60-64	2,399	3,396	4,807	6,834	6,695
65 and over	1,432	2,457	2,932	3,383	4,349

Table 3. RN supply by age group, 2000-2020

<u>Age Group</u>	<u>2000</u>	<u>2005</u>	<u>2010</u>	<u>2015</u>	<u>2020</u>
20-24	1,298	1,284	1,315	1,359	1,364
25-29	4,564	3,710	3,829	3,982	4,077
30-34	6,324	5,426	4,877	5,027	5,165
35-39	7,466	7,425	6,764	6,409	6,570
40-44	8,681	8,507	8,525	8,012	7,763
45-49	9,269	9,051	8,905	8,901	8,470
50-54	6,580	9,655	9,490	9,336	9,345
55-59	4,029	6,871	9,881	9,726	9,573
60-64	1,235	1,760	2,404	3,339	3,276
65 and over	138	227	274	283	373

Table 4. RN FTE supply by age group, 2000-2020

<u>Age Group</u>	<u>2000</u>	<u>2005</u>	<u>2010</u>	<u>2015</u>	<u>2020</u>
20-24	1,220	1,208	1,240	1,286	1,293
25-29	4,299	3,507	3,646	3,788	3,888
30-34	5,539	4,750	4,274	4,419	4,544
35-39	6,794	6,784	6,205	5,903	6,062
40-44	7,925	7,790	7,826	7,388	7,172
45-49	8,429	8,248	8,105	8,112	7,714
50-54	6,027	8,841	8,712	8,572	8,567
55-59	3,653	6,241	8,981	8,869	8,743
60-64	1,027	1,466	2,006	2,795	2,747
65 and over	78	128	151	157	208

Table 5.
PROJECTIONS OF RN POPULATIONS BY AGE FOR 2000 FOR TENNESSEE

AGE GROUP	EDUCATIONAL PREPARATION			TOTAL
YEAR	AD/DIPLOMA	BACCALAUREATE	MASTERS & UP	
20-24	560	755	22	1337
25-29	2037	2367	284	4688
30-34	3805	2656	505	6966
35-39	5047	2505	595	8148
40-44	6137	2447	756	9339
45-49	6641	2376	1095	10112
50-54	4926	1396	810	7132
55-59	3130	665	410	4205
60-64	1818	325	256	2399
65-69	746	132	92	970
70-74	276	37	37	350
75-79	87	5	8	100
80-84	10	1	0	12
85-up	0	0	0	0
ALL	35220	15667	4869	55756

Table 6.
PROJECTIONS OF RN POPULATIONS BY AGE FOR 2001 FOR TENNESSEE

AGE GROUP	EDUCATIONAL PREPARATION			TOTAL
YEAR	AD/DIPLOMA	BACCALAUREATE	MASTERS & UP	
20-24	585	718	12	1315
25-29	1845	2258	253	4357
30-34	3889	2690	568	7147
35-39	4860	2384	643	7887
40-44	6002	2533	764	9299
45-49	6787	2407	1104	10297
50-54	5371	1589	902	7863
55-59	3530	771	494	4795
60-64	1974	347	257	2578
65-69	883	155	113	1152
70-74	306	39	39	383
75-79	105	11	10	125
80-84	11	3	0	13
85-up	0	0	0	0
ALL	36147	15905	5159	57212

Table 7.
PROJECTIONS OF RN POPULATIONS BY AGE FOR 2002 FOR TENNESSEE

AGE GROUP	EDUCATIONAL PREPARATION			TOTAL
	AD/DIPLOMA	BACCALAUREATE	MASTERS & UP	
20-24	628	674	6	1308
25-29	1703	2177	231	4111
30-34	3798	2654	577	7030
35-39	4607	2352	683	7642
40-44	6113	2548	820	9481
45-49	6713	2404	1087	10204
50-54	5911	1801	1001	8713
55-59	3918	880	548	5346
60-64	2173	399	284	2856
65-69	933	172	124	1228
70-74	354	37	40	431
75-79	99	16	10	125
80-84	14	4	0	18
85-up	0	0	0	0
ALL	36964	16118	5412	58494

Table 8.
PROJECTIONS OF RN POPULATIONS BY AGE FOR 2003 FOR TENNESSEE

AGE GROUP	EDUCATIONAL PREPARATION			TOTAL
	AD/DIPLOMA	BACCALAUREATE	MASTERS & UP	
20-24	694	652	0	1346
25-29	1640	2108	196	3945
30-34	3534	2616	607	6757
35-39	4594	2353	712	7660
40-44	6105	2551	865	9521
45-49	6681	2354	1095	10130
50-54	6319	2023	1045	9387
55-59	4380	1037	607	6024
60-64	2229	401	311	2942
65-69	1039	193	128	1359
70-74	364	42	50	455
75-79	117	16	10	143
80-84	17	4	1	22
85-up	2	0	0	3
ALL	37715	16350	5628	59694

Table 9.
PROJECTIONS OF RN POPULATIONS BY AGE FOR 2004 FOR TENNESSEE

AGE GROUP	EDUCATIONAL PREPARATION			TOTAL
YEAR	AD/DIPLOMA	BACCALAUREATE	MASTERS & UP	
20-24	671	652	0	1324
25-29	1599	2082	162	3844
30-34	3298	2518	600	6416
35-39	4634	2402	776	7813
40-44	6034	2552	898	9483
45-49	6517	2305	1063	9884
50-54	6769	2231	1119	10118
55-59	4779	1162	681	6622
60-64	2342	425	315	3082
65-69	1103	206	138	1446
70-74	458	50	58	565
75-79	127	16	14	157
80-84	23	4	2	28
85-up	1	0	0	1
ALL	38353	16605	5825	60783

Table 10.
PROJECTIONS OF RN POPULATIONS BY AGE FOR 2005 FOR TENNESSEE

AGE GROUP	EDUCATIONAL PREPARATION			TOTAL
YEAR	AD/DIPLOMA	BACCALAUREATE	MASTERS & UP	
20-24	637	664	0	1301
25-29	1618	2049	143	3809
30-34	2998	2419	583	5999
35-39	4773	2535	817	8125
40-44	5763	2463	917	9144
45-49	6509	2312	1051	9872
50-54	6976	2333	1150	10459
55-59	5083	1313	764	7161
60-64	2591	473	332	3396
65-69	1239	216	148	1603
70-74	505	58	61	623
75-79	151	19	21	190
80-84	32	4	3	39
85-up	2	1	0	2
ALL	38877	16859	5989	61725

Table 11.
PROJECTIONS OF RN POPULATIONS BY AGE FOR 2006 FOR TENNESSEE

AGE GROUP	EDUCATIONAL PREPARATION			TOTAL
YEAR	AD/DIPLOMA	BACCALAUREATE	MASTERS & UP	
20-24	624	667	0	1291
25-29	1634	2045	133	3811
30-34	2838	2362	554	5754
35-39	4843	2578	846	8268
40-44	5590	2395	933	8918
45-49	6380	2394	1045	9818
50-54	7094	2359	1150	10604
55-59	5496	1482	835	7813
60-64	2823	528	379	3730
65-69	1276	220	142	1638
70-74	598	67	75	741
75-79	168	20	22	209
80-84	39	4	3	47
85-up	2	1	0	2
ALL	39405	17122	6118	62646

Table 12.
PROJECTIONS OF RN POPULATIONS BY AGE FOR 2007 FOR TENNESSEE

AGE GROUP	EDUCATIONAL PREPARATION			TOTAL
YEAR	AD/DIPLOMA	BACCALAUREATE	MASTERS & UP	
20-24	615	662	0	1277
25-29	1672	2050	123	3846
30-34	2722	2327	527	5576
35-39	4773	2581	835	8189
40-44	5372	2399	940	8710
45-49	6481	2424	1074	9979
50-54	7021	2363	1131	10515
55-59	6013	1672	911	8597
60-64	3029	581	405	4015
65-69	1308	234	146	1688
70-74	632	74	82	788
75-79	191	20	23	233
80-84	38	4	3	45
85-up	2	1	0	3
ALL	39868	17392	6201	63461

Table 13.
PROJECTIONS OF RN POPULATIONS BY AGE FOR 2008 FOR TENNESSEE

AGE GROUP	EDUCATIONAL PREPARATION			TOTAL
YEAR	AD/DIPLOMA	BACCALAUREATE	MASTERS & UP	
20-24	611	663	0	1274
25-29	1729	2067	114	3910
30-34	2673	2304	490	5468
35-39	4554	2584	835	7973
40-44	5370	2428	937	8735
45-49	6478	2448	1091	10018
50-54	6995	2329	1131	10455
55-59	6412	1872	945	9230
60-64	3260	656	429	4344
65-69	1244	219	147	1610
70-74	699	81	85	865
75-79	195	21	28	243
80-84	43	4	4	51
85-up	3	1	0	4
ALL	40265	17677	6237	64179

Table 14.
PROJECTIONS OF RN POPULATIONS BY AGE FOR 2009 FOR TENNESSEE

AGE GROUP	EDUCATIONAL PREPARATION			TOTAL
YEAR	AD/DIPLOMA	BACCALAUREATE	MASTERS & UP	
20-24	611	694	0	1306
25-29	1718	2095	108	3921
30-34	2646	2314	454	5414
35-39	4365	2547	812	7724
40-44	5422	2493	956	8872
45-49	6427	2471	1100	9998
50-54	6857	2299	1099	10255
55-59	6867	2065	1005	9936
60-64	3415	703	459	4577
65-69	1191	210	136	1538
70-74	736	86	91	913
75-79	235	22	32	290
80-84	46	4	5	54
85-up	3	1	0	5
ALL	40541	18004	6257	64801

Table 15.
PROJECTIONS OF RN POPULATIONS BY AGE FOR 2010 FOR TENNESSEE

AGE GROUP	EDUCATIONAL PREPARATION			TOTAL
YEAR	AD/DIPLOMA	BACCALAUREATE	MASTERS & UP	
20-24	614	719	0	1333
25-29	1696	2130	106	3932
30-34	2671	2318	431	5420
35-39	4122	2506	787	7414
40-44	5567	2619	965	9151
45-49	6200	2425	1101	9727
50-54	6871	2318	1086	10275
55-59	7092	2165	1031	10288
60-64	3540	770	497	4807
65-69	1199	213	130	1543
70-74	821	90	97	1008
75-79	255	24	33	312
80-84	53	4	7	63
85-up	5	1	0	6
ALL	40706	18301	6272	65278

Table 16.
PROJECTIONS OF RN POPULATIONS BY AGE FOR 2011 FOR TENNESSEE

AGE GROUP	EDUCATIONAL PREPARATION			TOTAL
YEAR	AD/DIPLOMA	BACCALAUREATE	MASTERS & UP	
20-24	613	722	0	1336
25-29	1690	2162	107	3959
30-34	2694	2334	422	5450
35-39	3996	2482	762	7240
40-44	5645	2669	975	9289
45-49	6056	2387	1105	9548
50-54	6755	2396	1077	10227
55-59	7213	2192	1031	10435
60-64	3801	862	537	5200
65-69	1224	223	139	1586
70-74	851	92	94	1037
75-79	299	26	42	367
80-84	59	4	7	70
85-up	6	1	1	7
ALL	40900	18552	6299	65750

Table 17.
PROJECTIONS OF RN POPULATIONS BY AGE FOR 2012 FOR TENNESSEE

AGE GROUP	EDUCATIONAL PREPARATION			TOTAL
YEAR	AD/DIPLOMA	BACCALAUREATE	MASTERS & UP	
20-24	600	713	0	1313
25-29	1678	2186	112	3976
30-34	2722	2342	423	5487
35-39	3891	2458	748	7097
40-44	5579	2672	970	9222
45-49	5854	2391	1110	9354
50-54	6836	2420	1098	10354
55-59	7124	2189	1013	10326
60-64	4174	974	588	5736
65-69	1261	235	143	1638
70-74	880	98	98	1075
75-79	318	28	46	391
80-84	68	4	8	79
85-up	6	1	1	7
ALL	40991	18712	6355	66058

Table 18.
PROJECTIONS OF RN POPULATIONS BY AGE FOR 2013 FOR TENNESSEE

AGE GROUP	EDUCATIONAL PREPARATION			TOTAL
YEAR	AD/DIPLOMA	BACCALAUREATE	MASTERS & UP	
20-24	592	714	0	1306
25-29	1672	2206	118	3996
30-34	2765	2350	431	5547
35-39	3846	2438	735	7019
40-44	5381	2667	983	9032
45-49	5847	2407	1116	9371
50-54	6824	2437	1113	10375
55-59	7090	2155	1013	10259
60-64	4453	1088	611	6152
65-69	1317	256	147	1720
70-74	842	93	99	1034
75-79	349	30	47	426
80-84	69	4	10	83
85-up	7	1	1	8
ALL	41056	18846	6425	66327

Table 19.
PROJECTIONS OF RN POPULATIONS BY AGE FOR 2014 FOR TENNESSEE

AGE GROUP	EDUCATIONAL PREPARATION			TOTAL
	AD/DIPLOMA	BACCALAUREATE	MASTERS & UP	
20-24	590	756	0	1346
25-29	1671	2239	124	4035
30-34	2754	2362	447	5563
35-39	3823	2438	729	6989
40-44	5211	2628	989	8827
45-49	5891	2445	1146	9482
50-54	6771	2452	1125	10348
55-59	6958	2127	990	10075
60-64	4760	1195	648	6603
65-69	1351	269	154	1774
70-74	806	90	91	987
75-79	365	31	50	446
80-84	83	4	11	97
85-up	7	1	1	8
ALL	41040	19034	6506	66581

Table 20.
PROJECTIONS OF RN POPULATIONS BY AGE FOR 2015 FOR TENNESSEE

AGE GROUP	EDUCATIONAL PREPARATION			TOTAL
	AD/DIPLOMA	BACCALAUREATE	MASTERS & UP	
20-24	592	785	0	1377
25-29	1677	2282	129	4087
30-34	2739	2383	463	5585
35-39	3854	2439	733	7026
40-44	5002	2590	996	8589
45-49	6028	2533	1173	9734
50-54	6568	2412	1136	10116
55-59	6994	2148	986	10128
60-64	4916	1251	666	6834
65-69	1355	284	161	1800
70-74	808	91	87	986
75-79	401	31	53	485
80-84	87	4	11	103
85-up	8	1	1	9
ALL	41029	19234	6596	66859

Table 21.
PROJECTIONS OF RN POPULATIONS BY AGE FOR 2016 FOR TENNESSEE

AGE GROUP	EDUCATIONAL PREPARATION			TOTAL
YEAR	AD/DIPLOMA	BACCALAUREATE	MASTERS & UP	
20-24	600	786	0	1386
25-29	1680	2318	132	4130
30-34	2740	2404	478	5622
35-39	3884	2449	744	7076
40-44	4901	2567	1001	8469
45-49	6107	2566	1199	9872
50-54	6445	2382	1148	9975
55-59	6902	2221	985	10108
60-64	4972	1259	664	6895
65-69	1413	308	169	1890
70-74	820	93	92	1006
75-79	411	31	51	493
80-84	100	4	14	118
85-up	8	1	1	10
ALL	40983	19390	6678	67051

Table 22.
PROJECTIONS OF RN POPULATIONS BY AGE FOR 2017 FOR TENNESSEE

AGE GROUP	EDUCATIONAL PREPARATION			TOTAL
YEAR	AD/DIPLOMA	BACCALAUREATE	MASTERS & UP	
20-24	592	767	0	1359
25-29	1663	2345	134	4143
30-34	2727	2423	491	5640
35-39	3907	2454	756	7117
40-44	4811	2546	1006	8364
45-49	6055	2566	1209	9829
50-54	6263	2386	1159	9809
55-59	6990	2244	1005	10239
60-64	4878	1247	649	6774
65-69	1531	345	183	2058
70-74	840	97	94	1032
75-79	421	33	53	507
80-84	105	4	15	124
85-up	9	1	1	11
ALL	40792	19458	6755	67006

Table 23.
PROJECTIONS OF RN POPULATIONS BY AGE FOR 2018 FOR TENNESSEE

AGE GROUP	EDUCATIONAL PREPARATION			TOTAL
	AD/DIPLOMA	BACCALAUREATE	MASTERS & UP	
20-24	586	756	0	1343
25-29	1652	2365	135	4152
30-34	2723	2443	500	5666
35-39	3945	2462	770	7176
40-44	4775	2530	1008	8313
45-49	5882	2563	1227	9673
50-54	6262	2402	1169	9833
55-59	6979	2258	1019	10256
60-64	4851	1227	649	6727
65-69	1645	388	192	2225
70-74	877	106	97	1080
75-79	406	32	54	492
80-84	116	4	15	136
85-up	10	1	1	12
ALL	40708	19538	6839	67084

Table 24.
PROJECTIONS OF RN POPULATIONS BY AGE FOR 2019 FOR TENNESSEE

AGE GROUP	EDUCATIONAL PREPARATION			TOTAL
	AD/DIPLOMA	BACCALAUREATE	MASTERS & UP	
20-24	583	787	0	1370
25-29	1648	2388	136	4171
30-34	2726	2472	507	5705
35-39	3936	2474	784	7194
40-44	4754	2532	1009	8294
45-49	5729	2533	1236	9497
50-54	6298	2432	1196	9927
55-59	6917	2267	1027	10212
60-64	4789	1218	639	6647
65-69	1789	435	209	2433
70-74	905	111	102	1118
75-79	394	31	50	476
80-84	124	4	17	145
85-up	12	1	2	14
ALL	40604	19685	6914	67203

Table 25.
PROJECTIONS OF RN POPULATIONS BY AGE FOR 2020 FOR TENNESSEE

AGE GROUP	EDUCATIONAL PREPARATION			TOTAL
YEAR	AD/DIPLOMA	BACCALAUREATE	MASTERS & UP	
20-24	584	798	0	1382
25-29	1646	2400	136	4182
30-34	2735	2502	510	5747
35-39	3923	2486	796	7205
40-44	4776	2531	1013	8320
45-49	5533	2501	1242	9276
50-54	6415	2503	1218	10135
55-59	6702	2226	1033	9961
60-64	4824	1233	638	6695
65-69	1878	464	218	2561
70-74	911	117	107	1134
75-79	398	32	48	478
80-84	138	4	18	160
85-up	13	1	2	16
ALL	40476	19797	6981	67254

Table 26.
 PROJECTIONS OF RN SUPPLY BY AGE FOR 2000 FOR TENNESSEE

AGE GROUP	EDUCATIONAL PREPARATION			TOTAL
	AD/DIPLOMA	BACCALAUREATE	MASTERS & UP	
20-24	553	745	0	1298
25-29	1947	2336	281	4564
30-34	3703	2122	498	6324
35-39	4717	2241	508	7466
40-44	5585	2396	700	8681
45-49	6218	2098	953	9269
50-54	4605	1307	667	6580
55-59	2969	656	404	4029
60-64	1235	0	0	1235
65-69	83	0	0	83
70-74	0	18	37	55
75-79	0	0	0	0
80-84	0	0	0	0
85-up	0	0	0	0
ALL	31614	13920	4049	49583

Table 27.
 PROJECTIONS OF RN SUPPLY BY AGE FOR 2001 FOR TENNESSEE

AGE GROUP	EDUCATIONAL PREPARATION			TOTAL
	AD/DIPLOMA	BACCALAUREATE	MASTERS & UP	
20-24	577	709	0	1286
25-29	1764	2229	250	4243
30-34	3785	2149	560	6495
35-39	4542	2132	549	7223
40-44	5463	2481	707	8651
45-49	6355	2124	961	9440
50-54	5021	1489	744	7254
55-59	3348	761	487	4596
60-64	1340	0	0	1340
65-69	98	0	0	98
70-74	0	19	38	57
75-79	0	0	0	0
80-84	0	0	0	0
85-up	0	0	0	0
ALL	32293	14094	4296	50684

Table 28.
PROJECTIONS OF RN SUPPLY BY AGE FOR 2002 FOR TENNESSEE

AGE GROUP	EDUCATIONAL PREPARATION			TOTAL
	AD/DIPLOMA	BACCALAUREATE	MASTERS & UP	
20-24	620	665	0	1285
25-29	1628	2148	228	4005
30-34	3697	2121	569	6387
35-39	4305	2104	583	6992
40-44	5563	2496	759	8818
45-49	6286	2122	946	9354
50-54	5526	1687	825	8037
55-59	3715	869	541	5125
60-64	1476	0	0	1476
65-69	104	0	0	104
70-74	0	18	40	58
75-79	0	0	0	0
80-84	0	0	0	0
85-up	0	0	0	0
ALL	32920	14231	4492	51642

Table 29.
PROJECTIONS OF RN SUPPLY BY AGE FOR 2003 FOR TENNESSEE

AGE GROUP	EDUCATIONAL PREPARATION			TOTAL
	AD/DIPLOMA	BACCALAUREATE	MASTERS & UP	
20-24	685	643	0	1328
25-29	1568	2081	194	3842
30-34	3440	2090	599	6129
35-39	4293	2105	608	7006
40-44	5556	2499	801	8856
45-49	6256	2078	953	9287
50-54	5908	1894	861	8663
55-59	4154	1023	599	5777
60-64	1514	0	0	1514
65-69	115	0	0	115
70-74	0	21	49	70
75-79	0	0	0	0
80-84	0	0	0	0
85-up	0	0	0	0
ALL	33489	14435	4664	52588

Table 30.
PROJECTIONS OF RN SUPPLY BY AGE FOR 2004 FOR TENNESSEE

AGE GROUP	EDUCATIONAL PREPARATION			TOTAL
	AD/DIPLOMA	BACCALAUREATE	MASTERS & UP	
20-24	663	644	0	1306
25-29	1529	2055	160	3744
30-34	3210	2012	592	5814
35-39	4330	2149	663	7142
40-44	5491	2499	831	8821
45-49	6102	2035	925	9062
50-54	6328	2089	922	9339
55-59	4532	1147	673	6351
60-64	1590	0	0	1590
65-69	123	0	0	123
70-74	0	25	57	82
75-79	0	0	0	0
80-84	0	0	0	0
85-up	0	0	0	0
ALL	33898	14654	4822	53375

Table 31.
PROJECTIONS OF RN SUPPLY BY AGE FOR 2005 FOR TENNESSEE

AGE GROUP	EDUCATIONAL PREPARATION			TOTAL
	AD/DIPLOMA	BACCALAUREATE	MASTERS & UP	
20-24	628	656	0	1284
25-29	1547	2022	141	3710
30-34	2918	1933	575	5426
35-39	4460	2268	697	7425
40-44	5245	2413	849	8507
45-49	6095	2041	915	9051
50-54	6522	2185	948	9655
55-59	4821	1296	754	6871
60-64	1760	0	0	1760
65-69	138	0	0	138
70-74	0	29	60	89
75-79	0	0	0	0
80-84	0	0	0	0
85-up	0	0	0	0
ALL	34134	14841	4940	53915

Table 32.
PROJECTIONS OF RN SUPPLY BY AGE FOR 2006 FOR TENNESSEE

AGE GROUP	EDUCATIONAL PREPARATION			TOTAL
	AD/DIPLOMA	BACCALAUREATE	MASTERS & UP	
20-24	616	658	0	1274
25-29	1562	2018	131	3711
30-34	2763	1887	547	5197
35-39	4526	2306	723	7555
40-44	5087	2346	864	8297
45-49	5973	2113	910	8996
50-54	6632	2210	948	9790
55-59	5212	1463	824	7499
60-64	1917	0	0	1917
65-69	142	0	0	142
70-74	0	34	74	108
75-79	0	0	0	0
80-84	0	0	0	0
85-up	0	0	0	0
ALL	34431	15035	5020	54487

Table 33.
PROJECTIONS OF RN SUPPLY BY AGE FOR 2007 FOR TENNESSEE

AGE GROUP	EDUCATIONAL PREPARATION			TOTAL
	AD/DIPLOMA	BACCALAUREATE	MASTERS & UP	
20-24	607	653	0	1260
25-29	1599	2023	122	3744
30-34	2649	1859	520	5029
35-39	4460	2309	713	7482
40-44	4889	2349	870	8108
45-49	6068	2140	935	9143
50-54	6564	2213	932	9709
55-59	5703	1651	900	8253
60-64	2057	0	0	2057
65-69	145	0	0	145
70-74	0	37	81	118
75-79	0	0	0	0
80-84	0	0	0	0
85-up	0	0	0	0
ALL	34741	15235	5073	55048

Table 34.
PROJECTIONS OF RN SUPPLY BY AGE FOR 2008 FOR TENNESSEE

AGE GROUP	EDUCATIONAL PREPARATION			TOTAL
YEAR	AD/DIPLOMA	BACCALAUREATE	MASTERS & UP	
20-24	603	655	0	1257
25-29	1653	2040	112	3806
30-34	2602	1841	484	4927
35-39	4256	2311	713	7280
40-44	4887	2378	868	8132
45-49	6066	2161	950	9177
50-54	6539	2181	932	9653
55-59	6081	1848	933	8862
60-64	2214	0	0	2214
65-69	138	0	0	138
70-74	0	41	84	124
75-79	0	0	0	0
80-84	0	0	0	0
85-up	0	0	0	0
ALL	35038	15456	5076	55570

Table 35.
PROJECTIONS OF RN SUPPLY BY AGE FOR 2009 FOR TENNESSEE

AGE GROUP	EDUCATIONAL PREPARATION			TOTAL
YEAR	AD/DIPLOMA	BACCALAUREATE	MASTERS & UP	
20-24	603	685	0	1289
25-29	1643	2067	107	3817
30-34	2575	1849	448	4872
35-39	4079	2278	694	7050
40-44	4935	2442	885	8262
45-49	6018	2181	957	9156
50-54	6410	2154	906	9469
55-59	6512	2038	992	9542
60-64	2319	0	0	2319
65-69	132	0	0	132
70-74	0	43	89	132
75-79	0	0	0	0
80-84	0	0	0	0
85-up	0	0	0	0
ALL	35228	15737	5078	56042

Table 36.
PROJECTIONS OF RN SUPPLY BY AGE FOR 2010 FOR TENNESSEE

AGE GROUP	EDUCATIONAL PREPARATION			TOTAL
	AD/DIPLOMA	BACCALAUREATE	MASTERS & UP	
20-24	606	709	0	1315
25-29	1622	2103	104	3829
30-34	2600	1852	426	4877
35-39	3851	2241	672	6764
40-44	5066	2565	893	8525
45-49	5806	2141	959	8905
50-54	6424	2171	895	9490
55-59	6726	2137	1018	9881
60-64	2404	0	0	2404
65-69	133	0	0	133
70-74	0	45	96	141
75-79	0	0	0	0
80-84	0	0	0	0
85-up	0	0	0	0
ALL	35238	15963	5062	56263

Table 37.
PROJECTIONS OF RN SUPPLY BY AGE FOR 2011 FOR TENNESSEE

AGE GROUP	EDUCATIONAL PREPARATION			TOTAL
	AD/DIPLOMA	BACCALAUREATE	MASTERS & UP	
20-24	605	713	0	1318
25-29	1616	2134	106	3856
30-34	2622	1865	417	4903
35-39	3734	2220	651	6605
40-44	5137	2614	903	8654
45-49	5670	2108	962	8740
50-54	6315	2244	887	9446
55-59	6840	2163	1017	10021
60-64	2582	0	0	2582
65-69	136	0	0	136
70-74	0	46	93	139
75-79	0	0	0	0
80-84	0	0	0	0
85-up	0	0	0	0
ALL	35257	16107	5035	56399

Table 38.
PROJECTIONS OF RN SUPPLY BY AGE FOR 2012 FOR TENNESSEE

AGE GROUP	EDUCATIONAL PREPARATION			TOTAL
	AD/DIPLOMA	BACCALAUREATE	MASTERS & UP	
20-24	592	703	0	1296
25-29	1604	2157	110	3872
30-34	2649	1872	417	4938
35-39	3636	2199	638	6473
40-44	5078	2617	898	8593
45-49	5481	2111	966	8558
50-54	6391	2266	905	9562
55-59	6757	2161	999	9917
60-64	2835	0	0	2835
65-69	140	0	0	140
70-74	0	49	96	146
75-79	0	0	0	0
80-84	0	0	0	0
85-up	0	0	0	0
ALL	35164	16136	5031	56331

Table 39.
PROJECTIONS OF RN SUPPLY BY AGE FOR 2013 FOR TENNESSEE

AGE GROUP	EDUCATIONAL PREPARATION			TOTAL
	AD/DIPLOMA	BACCALAUREATE	MASTERS & UP	
20-24	585	704	0	1289
25-29	1598	2177	116	3892
30-34	2692	1878	426	4995
35-39	3594	2181	628	6402
40-44	4898	2612	910	8420
45-49	5475	2125	971	8572
50-54	6380	2283	917	9580
55-59	6724	2127	1000	9852
60-64	3025	0	0	3025
65-69	146	0	0	146
70-74	0	46	97	144
75-79	0	0	0	0
80-84	0	0	0	0
85-up	0	0	0	0
ALL	35116	16134	5066	56316

Table 40.
PROJECTIONS OF RN SUPPLY BY AGE FOR 2014 FOR TENNESSEE

AGE GROUP	EDUCATIONAL PREPARATION			TOTAL
YEAR	AD/DIPLOMA	BACCALAUREATE	MASTERS & UP	
20-24	582	746	0	1328
25-29	1598	2210	123	3930
30-34	2681	1887	441	5009
35-39	3572	2181	623	6375
40-44	4742	2573	915	8231
45-49	5516	2158	998	8672
50-54	6330	2296	927	9554
55-59	6599	2099	978	9676
60-64	3232	0	0	3232
65-69	150	0	0	150
70-74	0	45	90	135
75-79	0	0	0	0
80-84	0	0	0	0
85-up	0	0	0	0
ALL	35003	16196	5094	56292

Table 41.
PROJECTIONS OF RN SUPPLY BY AGE FOR 2015 FOR TENNESSEE

AGE GROUP	EDUCATIONAL PREPARATION			TOTAL
YEAR	AD/DIPLOMA	BACCALAUREATE	MASTERS & UP	
20-24	584	775	0	1359
25-29	1603	2252	127	3982
30-34	2666	1904	457	5027
35-39	3601	2182	626	6409
40-44	4552	2537	922	8012
45-49	5644	2236	1021	8901
50-54	6141	2259	936	9336
55-59	6633	2120	973	9726
60-64	3339	0	0	3339
65-69	151	0	0	151
70-74	0	45	86	132
75-79	0	0	0	0
80-84	0	0	0	0
85-up	0	0	0	0
ALL	34913	16310	5149	56372

Table 42.
PROJECTIONS OF RN SUPPLY BY AGE FOR 2016 FOR TENNESSEE

AGE GROUP	EDUCATIONAL PREPARATION			TOTAL
	AD/DIPLOMA	BACCALAUREATE	MASTERS & UP	
20-24	593	775	0	1368
25-29	1606	2288	131	4025
30-34	2667	1921	472	5060
35-39	3629	2191	635	6455
40-44	4460	2514	927	7901
45-49	5718	2265	1044	9027
50-54	6026	2231	946	9203
55-59	6546	2192	972	9710
60-64	3377	0	0	3377
65-69	157	0	0	157
70-74	0	47	91	138
75-79	0	0	0	0
80-84	0	0	0	0
85-up	0	0	0	0
ALL	34779	16424	5217	56420

Table 43.
PROJECTIONS OF RN SUPPLY BY AGE FOR 2017 FOR TENNESSEE

AGE GROUP	EDUCATIONAL PREPARATION			TOTAL
	AD/DIPLOMA	BACCALAUREATE	MASTERS & UP	
20-24	584	757	0	1341
25-29	1590	2315	132	4037
30-34	2654	1936	484	5074
35-39	3650	2195	646	6492
40-44	4379	2494	932	7804
45-49	5669	2265	1052	8986
50-54	5855	2235	955	9045
55-59	6629	2215	992	9836
60-64	3313	0	0	3313
65-69	170	0	0	170
70-74	0	49	93	142
75-79	0	0	0	0
80-84	0	0	0	0
85-up	0	0	0	0
ALL	34494	16460	5286	56241

Table 44.
PROJECTIONS OF RN SUPPLY BY AGE FOR 2018 FOR TENNESSEE

AGE GROUP	EDUCATIONAL PREPARATION			TOTAL
YEAR	AD/DIPLOMA	BACCALAUREATE	MASTERS & UP	
20-24	578	747	0	1325
25-29	1580	2334	134	4047
30-34	2650	1952	494	5095
35-39	3686	2203	657	6546
40-44	4346	2478	933	7757
45-49	5507	2263	1068	8839
50-54	5854	2250	963	9067
55-59	6619	2229	1005	9853
60-64	3294	0	0	3294
65-69	183	0	0	183
70-74	0	53	96	149
75-79	0	0	0	0
80-84	0	0	0	0
85-up	0	0	0	0
ALL	34297	16507	5351	56156

Table 45.
PROJECTIONS OF RN SUPPLY BY AGE FOR 2019 FOR TENNESSEE

AGE GROUP	EDUCATIONAL PREPARATION			TOTAL
YEAR	AD/DIPLOMA	BACCALAUREATE	MASTERS & UP	
20-24	575	777	0	1352
25-29	1575	2357	134	4066
30-34	2654	1975	500	5129
35-39	3678	2213	669	6560
40-44	4326	2480	934	7740
45-49	5364	2236	1076	8676
50-54	5888	2278	986	9152
55-59	6560	2238	1014	9812
60-64	3253	0	0	3253
65-69	199	0	0	199
70-74	0	56	101	157
75-79	0	0	0	0
80-84	0	0	0	0
85-up	0	0	0	0
ALL	34072	16608	5414	56094

Table 46.
PROJECTIONS OF RN SUPPLY BY AGE FOR 2020 FOR TENNESSEE

AGE GROUP	EDUCATIONAL PREPARATION			TOTAL
YEAR	AD/DIPLOMA	BACCALAUREATE	MASTERS & UP	
20-24	576	788	0	1364
25-29	1574	2369	134	4077
30-34	2662	1999	504	5165
35-39	3666	2224	680	6570
40-44	4347	2479	938	7763
45-49	5180	2208	1081	8470
50-54	5997	2344	1003	9345
55-59	6356	2197	1020	9573
60-64	3276	0	0	3276
65-69	209	0	0	209
70-74	0	58	106	164
75-79	0	0	0	0
80-84	0	0	0	0
85-up	0	0	0	0
ALL	33844	16666	5466	55975

Table 47.
PROJECTIONS OF RN FTE SUPPLY BY AGE FOR 2000 FOR TENNESSEE

AGE GROUP	EDUCATIONAL PREPARATION			TOTAL
	AD/DIPLOMA	BACCALAUREATE	MASTERS & UP	
20-24	514	707	0	1220
25-29	1777	2265	257	4299
30-34	3314	1799	426	5539
35-39	4161	2157	476	6794
40-44	5022	2244	659	7925
45-49	5889	1682	858	8429
50-54	4433	1143	448	6024
55-59	2691	583	380	3653
60-64	1027	0	0	1027
65-69	51	0	0	51
70-74	0	4	23	27
75-79	0	0	0	0
80-84	0	0	0	0
85-up	0	0	0	0
ALL	28878	12584	3527	44988

Table 48.
PROJECTIONS OF RN FTE SUPPLY BY AGE FOR 2001 FOR TENNESSEE

AGE GROUP	EDUCATIONAL PREPARATION			TOTAL
	AD/DIPLOMA	BACCALAUREATE	MASTERS & UP	
20-24	538	674	0	1212
25-29	1614	2167	229	4011
30-34	3397	1827	480	5704
35-39	4018	2058	516	6593
40-44	4926	2330	668	7924
45-49	6036	1708	867	8612
50-54	4847	1305	501	6653
55-59	3043	678	459	4180
60-64	1118	0	0	1118
65-69	60	0	0	60
70-74	0	5	24	28
75-79	0	0	0	0
80-84	0	0	0	0
85-up	0	0	0	0
ALL	29598	12753	3745	46095

Table 49.
PROJECTIONS OF RN FTE SUPPLY BY AGE FOR 2002 FOR TENNESSEE

AGE GROUP	EDUCATIONAL PREPARATION			TOTAL
	AD/DIPLOMA	BACCALAUREATE	MASTERS & UP	
20-24	578	632	0	1210
25-29	1489	2087	209	3786
30-34	3316	1801	488	5605
35-39	3806	2030	547	6383
40-44	5013	2343	717	8072
45-49	5966	1705	854	8525
50-54	5330	1478	555	7364
55-59	3375	773	509	4657
60-64	1230	0	0	1230
65-69	63	0	0	63
70-74	0	4	24	29
75-79	0	0	0	0
80-84	0	0	0	0
85-up	0	0	0	0
ALL	30166	12854	3904	46924

Table 50.
PROJECTIONS OF RN FTE SUPPLY BY AGE FOR 2003 FOR TENNESSEE

AGE GROUP	EDUCATIONAL PREPARATION			TOTAL
	AD/DIPLOMA	BACCALAUREATE	MASTERS & UP	
20-24	637	611	0	1248
25-29	1432	2020	177	3629
30-34	3082	1774	512	5368
35-39	3791	2028	571	6390
40-44	5002	2343	755	8099
45-49	5931	1668	859	8458
50-54	5693	1658	579	7930
55-59	3770	910	563	5243
60-64	1260	0	0	1260
65-69	70	0	0	70
70-74	0	5	30	35
75-79	0	0	0	0
80-84	0	0	0	0
85-up	0	0	0	0
ALL	30669	13016	4047	47732

Table 51.
PROJECTIONS OF RN FTE SUPPLY BY AGE FOR 2004 FOR TENNESSEE

AGE GROUP	EDUCATIONAL PREPARATION			TOTAL
	AD/DIPLOMA	BACCALAUREATE	MASTERS & UP	
20-24	616	610	0	1226
25-29	1395	1992	146	3534
30-34	2873	1705	506	5084
35-39	3820	2068	621	6510
40-44	4937	2341	783	8061
45-49	5779	1632	833	8243
50-54	6091	1827	619	8537
55-59	4108	1019	632	5758
60-64	1322	0	0	1322
65-69	75	0	0	75
70-74	0	6	35	41
75-79	0	0	0	0
80-84	0	0	0	0
85-up	0	0	0	0
ALL	31016	13199	4175	48390

Table 52.
PROJECTIONS OF RN FTE SUPPLY BY AGE FOR 2005 FOR TENNESSEE

AGE GROUP	EDUCATIONAL PREPARATION			TOTAL
	AD/DIPLOMA	BACCALAUREATE	MASTERS & UP	
20-24	585	623	0	1208
25-29	1414	1964	129	3507
30-34	2616	1641	492	4750
35-39	3943	2187	655	6784
40-44	4725	2264	802	7790
45-49	5783	1640	825	8248
50-54	6290	1914	638	8841
55-59	4378	1153	710	6241
60-64	1466	0	0	1466
65-69	84	0	0	84
70-74	0	7	37	44
75-79	0	0	0	0
80-84	0	0	0	0
85-up	0	0	0	0
ALL	31284	13392	4288	48964

Table 53.
 PROJECTIONS OF RN FTE SUPPLY BY AGE FOR 2006 FOR TENNESSEE

AGE GROUP	EDUCATIONAL PREPARATION			TOTAL
	AD/DIPLOMA	BACCALAUREATE	MASTERS & UP	
20-24	575	627	0	1202
25-29	1433	1966	120	3519
30-34	2485	1607	470	4562
35-39	4012	2231	680	6924
40-44	4597	2208	818	7623
45-49	5685	1703	823	8211
50-54	6415	1942	640	8997
55-59	4748	1306	777	6831
60-64	1602	0	0	1602
65-69	87	0	0	87
70-74	0	8	46	54
75-79	0	0	0	0
80-84	0	0	0	0
85-up	0	0	0	0
ALL	31639	13598	4375	49612

Table 54.
 PROJECTIONS OF RN FTE SUPPLY BY AGE FOR 2007 FOR TENNESSEE

AGE GROUP	EDUCATIONAL PREPARATION			TOTAL
	AD/DIPLOMA	BACCALAUREATE	MASTERS & UP	
20-24	568	624	0	1192
25-29	1469	1975	112	3557
30-34	2388	1587	447	4422
35-39	3962	2237	673	6873
40-44	4426	2216	825	7468
45-49	5787	1728	848	8363
50-54	6362	1949	630	8941
55-59	5205	1476	851	7532
60-64	1723	0	0	1723
65-69	89	0	0	89
70-74	0	9	50	59
75-79	0	0	0	0
80-84	0	0	0	0
85-up	0	0	0	0
ALL	31980	13801	4437	50218

Table 55.
PROJECTIONS OF RN FTE SUPPLY BY AGE FOR 2008 FOR TENNESSEE

AGE GROUP	EDUCATIONAL PREPARATION			TOTAL
	AD/DIPLOMA	BACCALAUREATE	MASTERS & UP	
20-24	563	624	0	1188
25-29	1518	1990	103	3611
30-34	2343	1570	416	4328
35-39	3777	2238	672	6687
40-44	4421	2240	822	7483
45-49	5779	1743	860	8383
50-54	6332	1919	630	8881
55-59	5545	1651	881	8078
60-64	1852	0	0	1852
65-69	85	0	0	85
70-74	0	10	52	62
75-79	0	0	0	0
80-84	0	0	0	0
85-up	0	0	0	0
ALL	32214	13985	4437	50637

Table 56.
PROJECTIONS OF RN FTE SUPPLY BY AGE FOR 2009 FOR TENNESSEE

AGE GROUP	EDUCATIONAL PREPARATION			TOTAL
	AD/DIPLOMA	BACCALAUREATE	MASTERS & UP	
20-24	563	653	0	1216
25-29	1506	2013	98	3617
30-34	2315	1574	385	4273
35-39	3614	2202	653	6469
40-44	4457	2297	838	7591
45-49	5724	1756	866	8346
50-54	6197	1891	611	8699
55-59	5929	1818	935	8682
60-64	1937	0	0	1937
65-69	81	0	0	81
70-74	0	10	55	66
75-79	0	0	0	0
80-84	0	0	0	0
85-up	0	0	0	0
ALL	32323	14214	4441	50978

Table 57.
PROJECTIONS OF RN FTE SUPPLY BY AGE FOR 2010 FOR TENNESSEE

AGE GROUP	EDUCATIONAL PREPARATION			TOTAL
	AD/DIPLOMA	BACCALAUREATE	MASTERS & UP	
20-24	565	675	0	1240
25-29	1485	2045	96	3626
30-34	2335	1575	365	4274
35-39	3409	2164	632	6205
40-44	4571	2410	844	7826
45-49	5517	1722	866	8105
50-54	6204	1905	603	8712
55-59	6117	1905	959	8981
60-64	2006	0	0	2006
65-69	81	0	0	81
70-74	0	11	59	70
75-79	0	0	0	0
80-84	0	0	0	0
85-up	0	0	0	0
ALL	32290	14412	4424	51126

Table 58.
PROJECTIONS OF RN FTE SUPPLY BY AGE FOR 2011 FOR TENNESSEE

AGE GROUP	EDUCATIONAL PREPARATION			TOTAL
	AD/DIPLOMA	BACCALAUREATE	MASTERS & UP	
20-24	565	680	0	1245
25-29	1482	2080	97	3659
30-34	2359	1589	358	4305
35-39	3311	2148	613	6072
40-44	4643	2461	855	7959
45-49	5398	1698	871	7967
50-54	6109	1972	599	8681
55-59	6232	1932	960	9124
60-64	2158	0	0	2158
65-69	83	0	0	83
70-74	0	11	58	69
75-79	0	0	0	0
80-84	0	0	0	0
85-up	0	0	0	0
ALL	32341	14570	4410	51321

Table 59.
PROJECTIONS OF RN FTE SUPPLY BY AGE FOR 2012 FOR TENNESSEE

AGE GROUP	EDUCATIONAL PREPARATION			TOTAL
	AD/DIPLOMA	BACCALAUREATE	MASTERS & UP	
20-24	554	671	0	1225
25-29	1473	2105	102	3680
30-34	2386	1596	359	4341
35-39	3228	2130	602	5960
40-44	4594	2467	852	7913
45-49	5224	1703	875	7802
50-54	6190	1994	611	8796
55-59	6163	1932	944	9039
60-64	2372	0	0	2372
65-69	86	0	0	86
70-74	0	12	60	72
75-79	0	0	0	0
80-84	0	0	0	0
85-up	0	0	0	0
ALL	32271	14609	4405	51285

Table 60.
PROJECTIONS OF RN FTE SUPPLY BY AGE FOR 2013 FOR TENNESSEE

AGE GROUP	EDUCATIONAL PREPARATION			TOTAL
	AD/DIPLOMA	BACCALAUREATE	MASTERS & UP	
20-24	547	673	0	1220
25-29	1469	2126	107	3703
30-34	2426	1603	366	4396
35-39	3194	2114	592	5900
40-44	4435	2464	864	7763
45-49	5223	1716	881	7820
50-54	6185	2010	621	8816
55-59	6139	1903	946	8988
60-64	2533	0	0	2533
65-69	90	0	0	90
70-74	0	11	60	72
75-79	0	0	0	0
80-84	0	0	0	0
85-up	0	0	0	0
ALL	32241	14621	4438	51300

Table 61.
PROJECTIONS OF RN FTE SUPPLY BY AGE FOR 2014 FOR TENNESSEE

AGE GROUP	EDUCATIONAL PREPARATION			TOTAL
	AD/DIPLOMA	BACCALAUREATE	MASTERS & UP	
20-24	545	712	0	1257
25-29	1469	2159	113	3740
30-34	2417	1611	379	4408
35-39	3175	2114	588	5876
40-44	4295	2428	869	7592
45-49	5262	1743	905	7911
50-54	6138	2023	627	8788
55-59	6026	1878	925	8829
60-64	2708	0	0	2708
65-69	92	0	0	92
70-74	0	11	56	67
75-79	0	0	0	0
80-84	0	0	0	0
85-up	0	0	0	0
ALL	32127	14679	4462	51267

Table 62.
PROJECTIONS OF RN FTE SUPPLY BY AGE FOR 2015 FOR TENNESSEE

AGE GROUP	EDUCATIONAL PREPARATION			TOTAL
	AD/DIPLOMA	BACCALAUREATE	MASTERS & UP	
20-24	546	740	0	1286
25-29	1473	2198	117	3788
30-34	2402	1624	393	4419
35-39	3198	2114	591	5903
40-44	4121	2392	875	7388
45-49	5381	1805	925	8112
50-54	5950	1989	633	8572
55-59	6053	1896	920	8869
60-64	2795	0	0	2795
65-69	92	0	0	92
70-74	0	11	54	65
75-79	0	0	0	0
80-84	0	0	0	0
85-up	0	0	0	0
ALL	32012	14769	4507	51288

Table 63.
PROJECTIONS OF RN FTE SUPPLY BY AGE FOR 2016 FOR TENNESSEE

AGE GROUP	EDUCATIONAL PREPARATION			TOTAL
	AD/DIPLOMA	BACCALAUREATE	MASTERS & UP	
20-24	554	740	0	1294
25-29	1474	2231	120	3825
30-34	2401	1637	405	4444
35-39	3220	2121	599	5940
40-44	4034	2369	878	7280
45-49	5447	1827	945	8219
50-54	5834	1962	639	8435
55-59	5968	1959	918	8845
60-64	2824	0	0	2824
65-69	96	0	0	96
70-74	0	11	57	68
75-79	0	0	0	0
80-84	0	0	0	0
85-up	0	0	0	0
ALL	31853	14856	4561	51270

Table 64.
PROJECTIONS OF RN FTE SUPPLY BY AGE FOR 2017 FOR TENNESSEE

AGE GROUP	EDUCATIONAL PREPARATION			TOTAL
	AD/DIPLOMA	BACCALAUREATE	MASTERS & UP	
20-24	546	721	0	1268
25-29	1459	2257	122	3837
30-34	2389	1650	416	4454
35-39	3239	2125	608	5971
40-44	3959	2348	883	7190
45-49	5399	1826	952	8178
50-54	5667	1965	645	8277
55-59	6042	1978	936	8957
60-64	2770	0	0	2770
65-69	104	0	0	104
70-74	0	12	58	70
75-79	0	0	0	0
80-84	0	0	0	0
85-up	0	0	0	0
ALL	31574	14882	4621	51077

Table 65.
PROJECTIONS OF RN FTE SUPPLY BY AGE FOR 2018 FOR TENNESSEE

AGE GROUP	EDUCATIONAL PREPARATION			TOTAL
	AD/DIPLOMA	BACCALAUREATE	MASTERS & UP	
20-24	541	712	0	1253
25-29	1450	2276	123	3850
30-34	2386	1664	424	4475
35-39	3272	2132	620	6024
40-44	3931	2335	884	7151
45-49	5248	1825	968	8041
50-54	5669	1979	651	8299
55-59	6036	1992	950	8977
60-64	2756	0	0	2756
65-69	112	0	0	112
70-74	0	13	60	72
75-79	0	0	0	0
80-84	0	0	0	0
85-up	0	0	0	0
ALL	31399	14929	4680	51008

Table 66.
PROJECTIONS OF RN FTE SUPPLY BY AGE FOR 2019 FOR TENNESSEE

AGE GROUP	EDUCATIONAL PREPARATION			TOTAL
	AD/DIPLOMA	BACCALAUREATE	MASTERS & UP	
20-24	539	742	0	1281
25-29	1448	2301	123	3873
30-34	2392	1686	430	4509
35-39	3269	2145	632	6046
40-44	3918	2339	886	7144
45-49	5117	1806	976	7899
50-54	5709	2007	667	8382
55-59	5990	2002	959	8951
60-64	2724	0	0	2724
65-69	122	0	0	122
70-74	0	13	63	76
75-79	0	0	0	0
80-84	0	0	0	0
85-up	0	0	0	0
ALL	31228	15042	4737	51006

Table 67.
PROJECTIONS OF RN FTE SUPPLY BY AGE FOR 2020 FOR TENNESSEE

AGE GROUP	EDUCATIONAL PREPARATION			TOTAL
YEAR	AD/DIPLOMA	BACCALAUREATE	MASTERS & UP	
20-24	540	753	0	1293
25-29	1448	2315	124	3888
30-34	2402	1708	434	4544
35-39	3261	2158	642	6062
40-44	3941	2341	891	7172
45-49	4947	1785	982	7714
50-54	5820	2067	680	8567
55-59	5810	1967	966	8743
60-64	2747	0	0	2747
65-69	128	0	0	128
70-74	0	14	66	80
75-79	0	0	0	0
80-84	0	0	0	0
85-up	0	0	0	0
ALL	31044	15110	4784	50937

Figure 1. RN Population, Supply and FTE Supply, 2000-2020

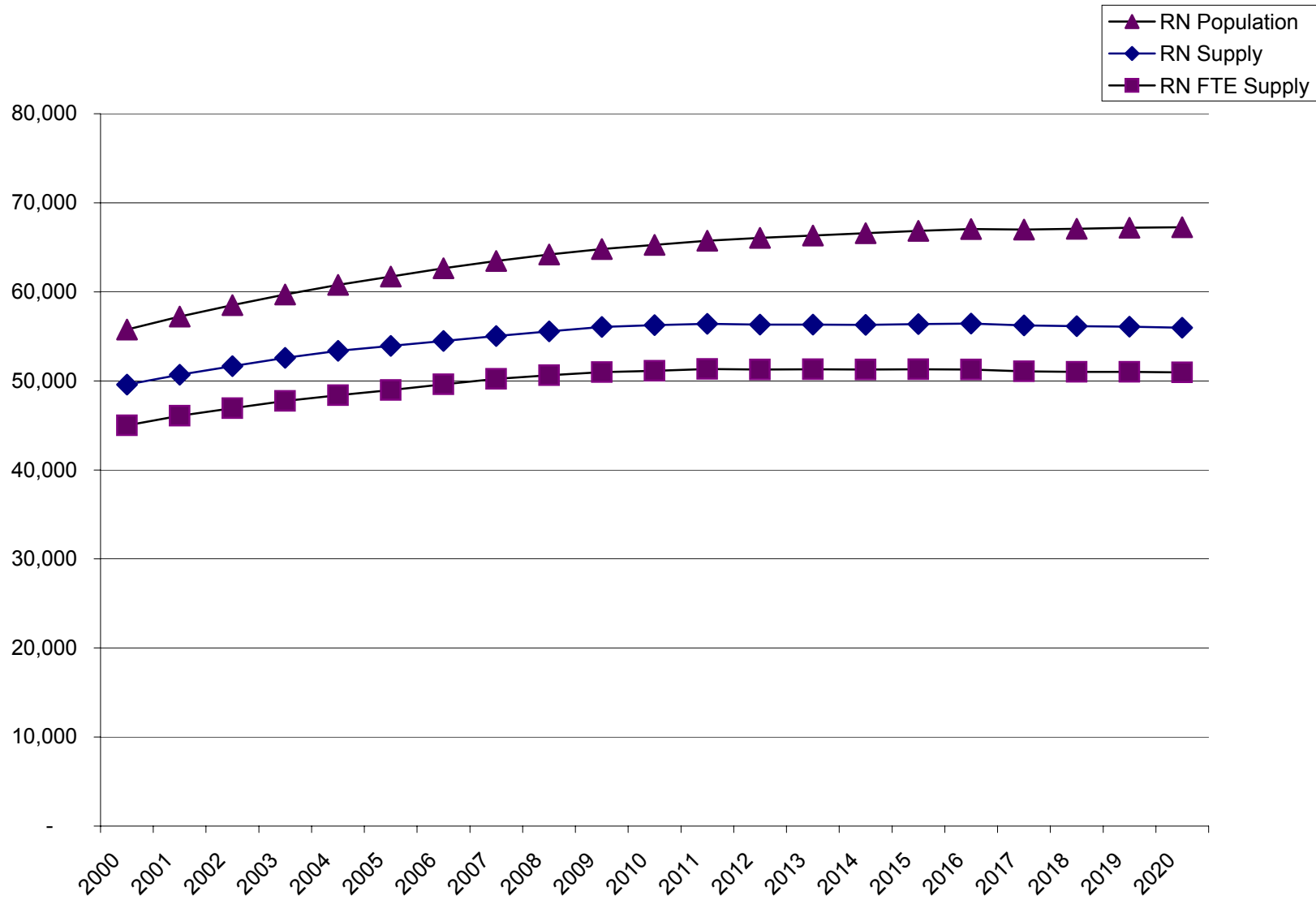


Figure 2. RN Population, Supply and FTE Supply- Age 20-24

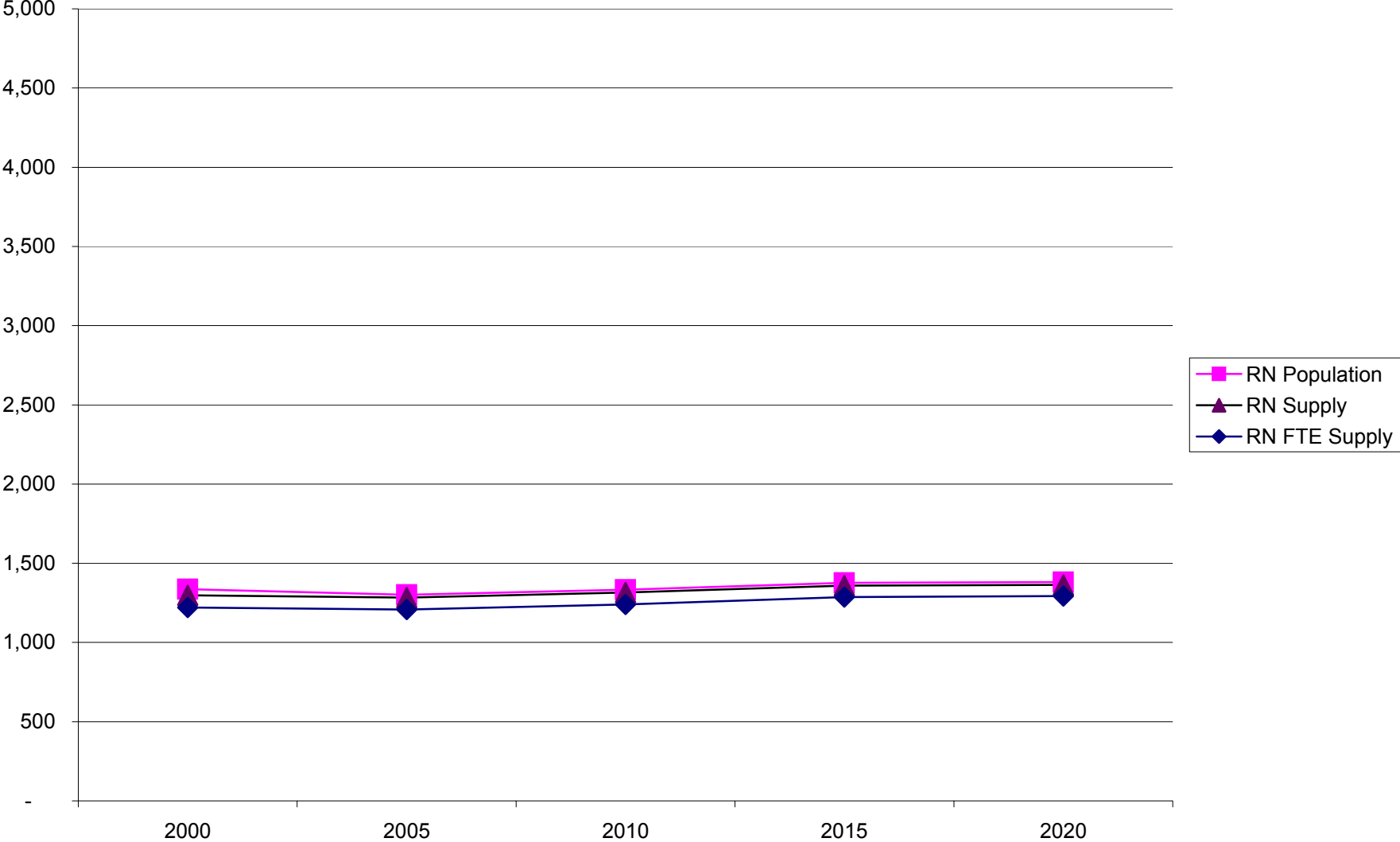


Figure 3. RN Population, Supply and FTE Supply- Age 25-29

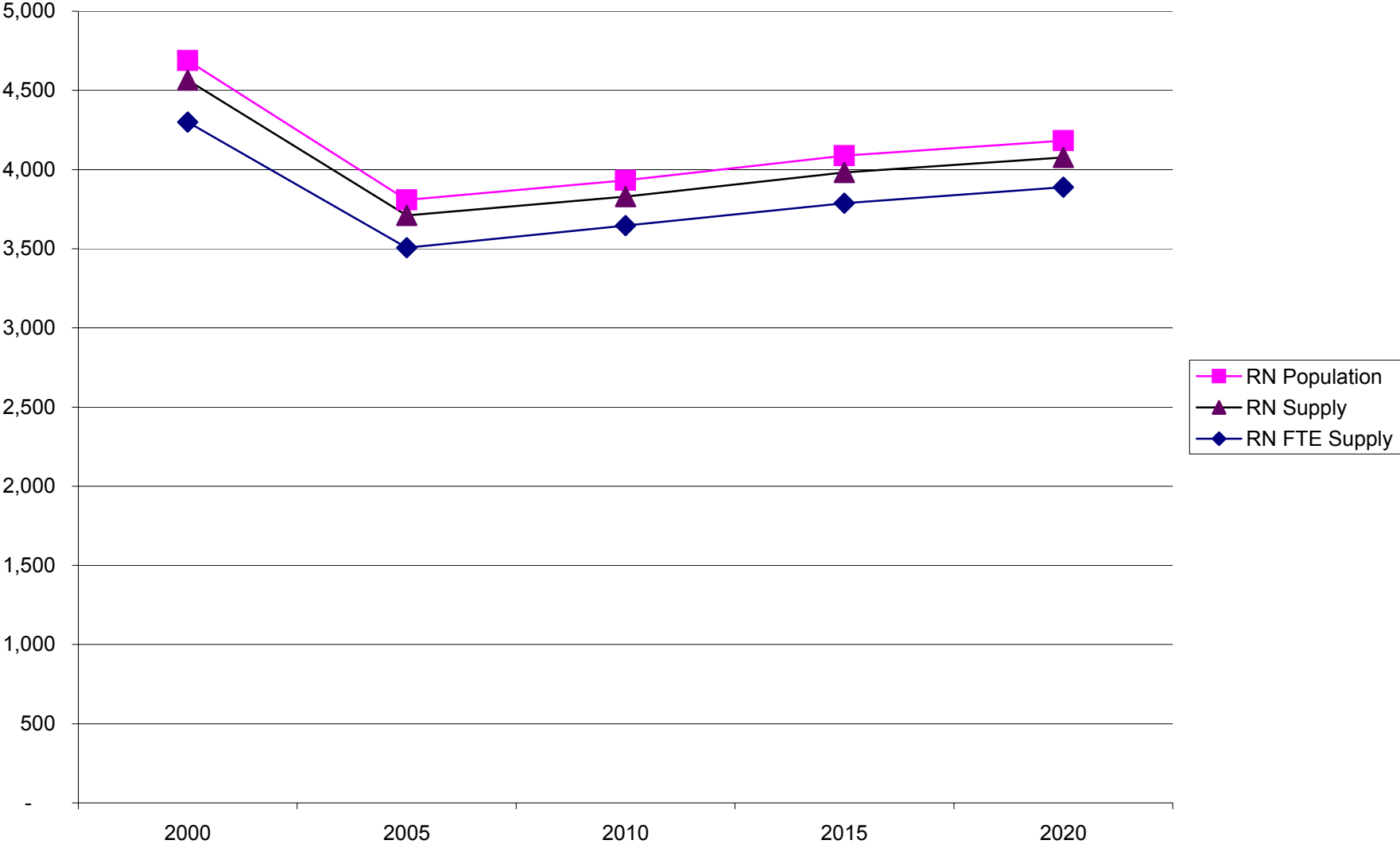


Figure 4. RN Population, Supply and FTE Supply- Age 30-34

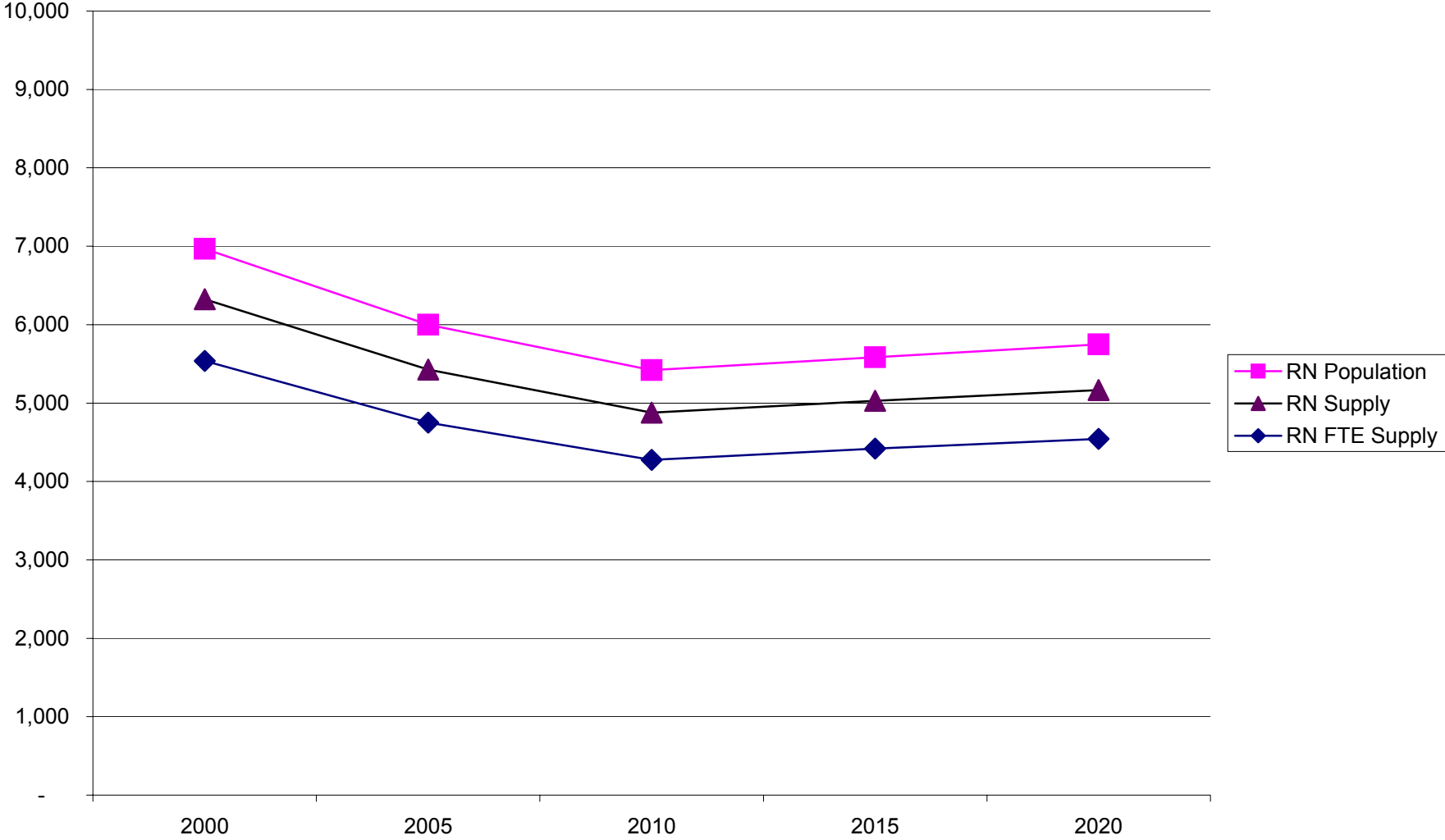


Figure 5. RN Population, Supply and FTE Supply- Age 35-39

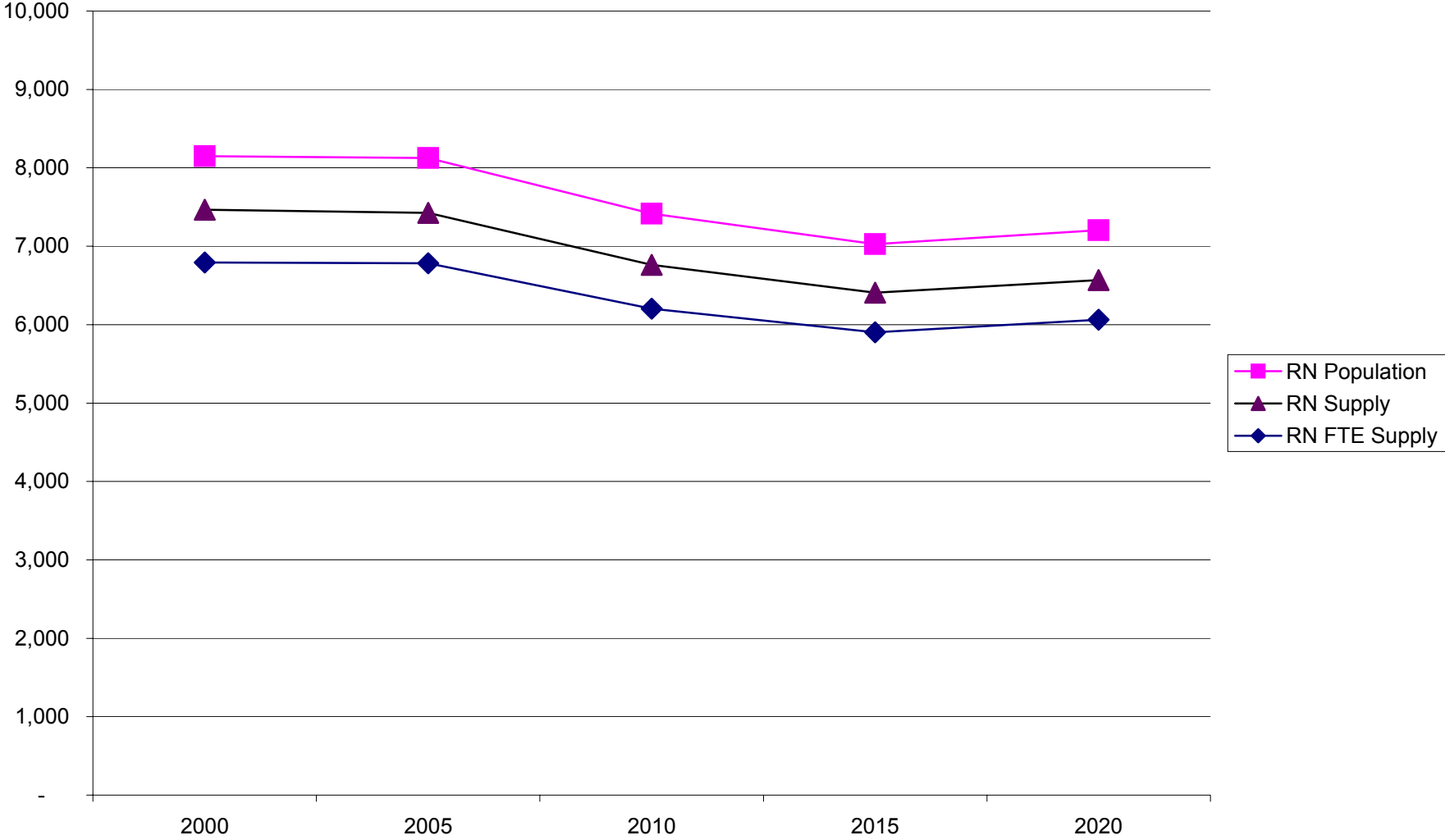


Figure 6. RN Population, Supply and FTE Supply- Age 40-44

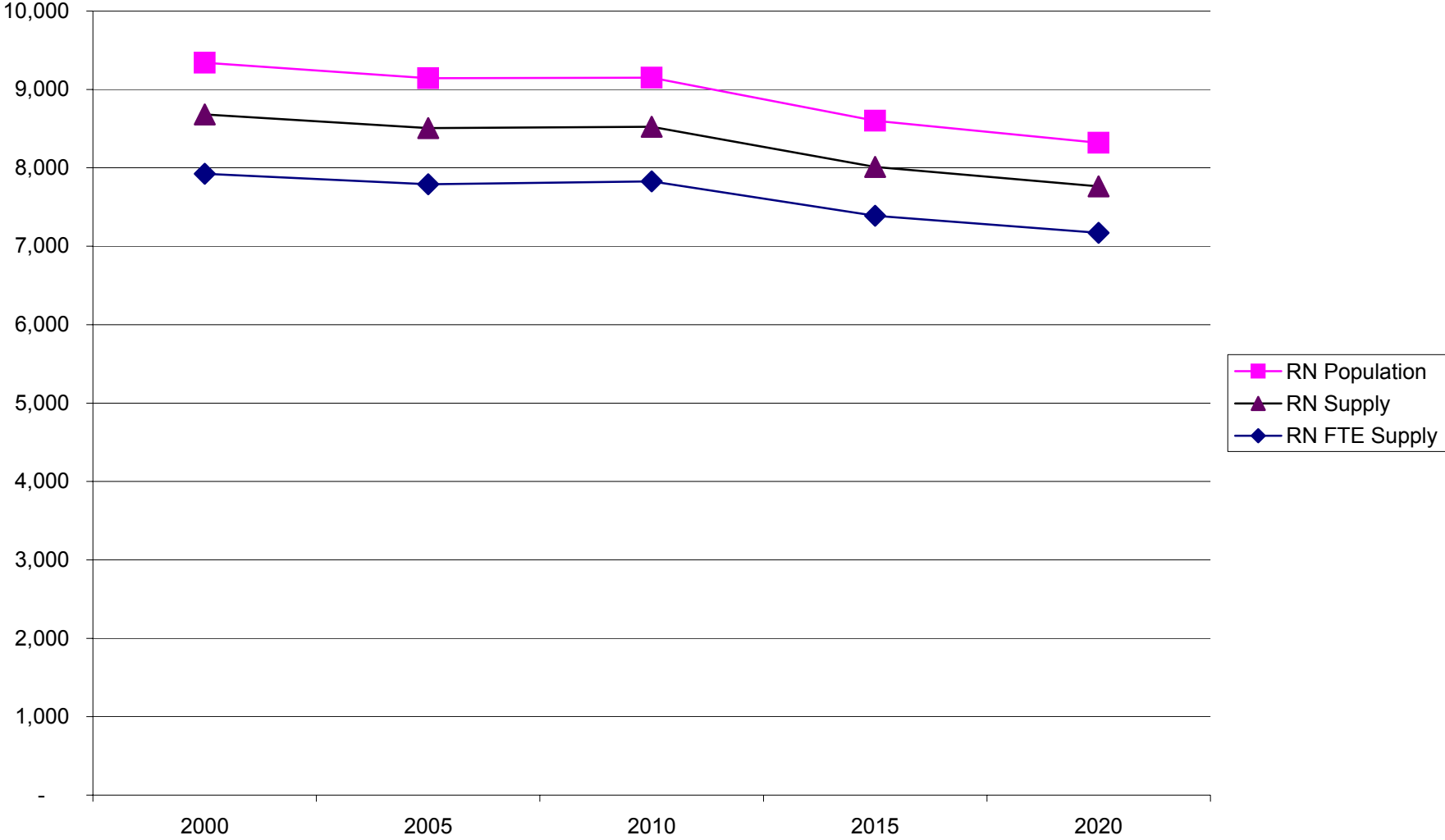


Figure 7. RN Population, Supply and FTE Supply- Age 45-49

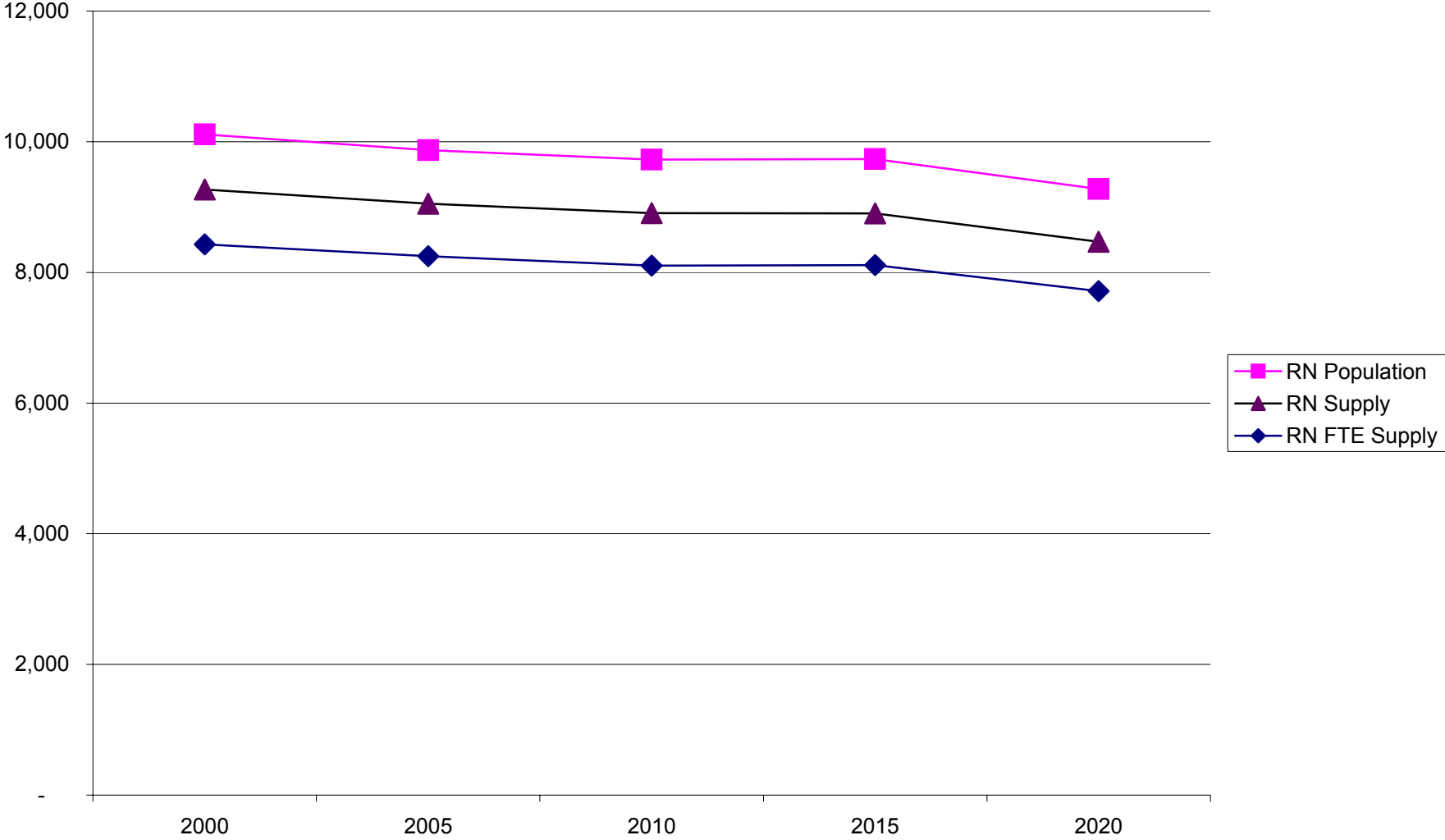


Figure 8. RN Population, Supply and FTE Supply- Age 50-54

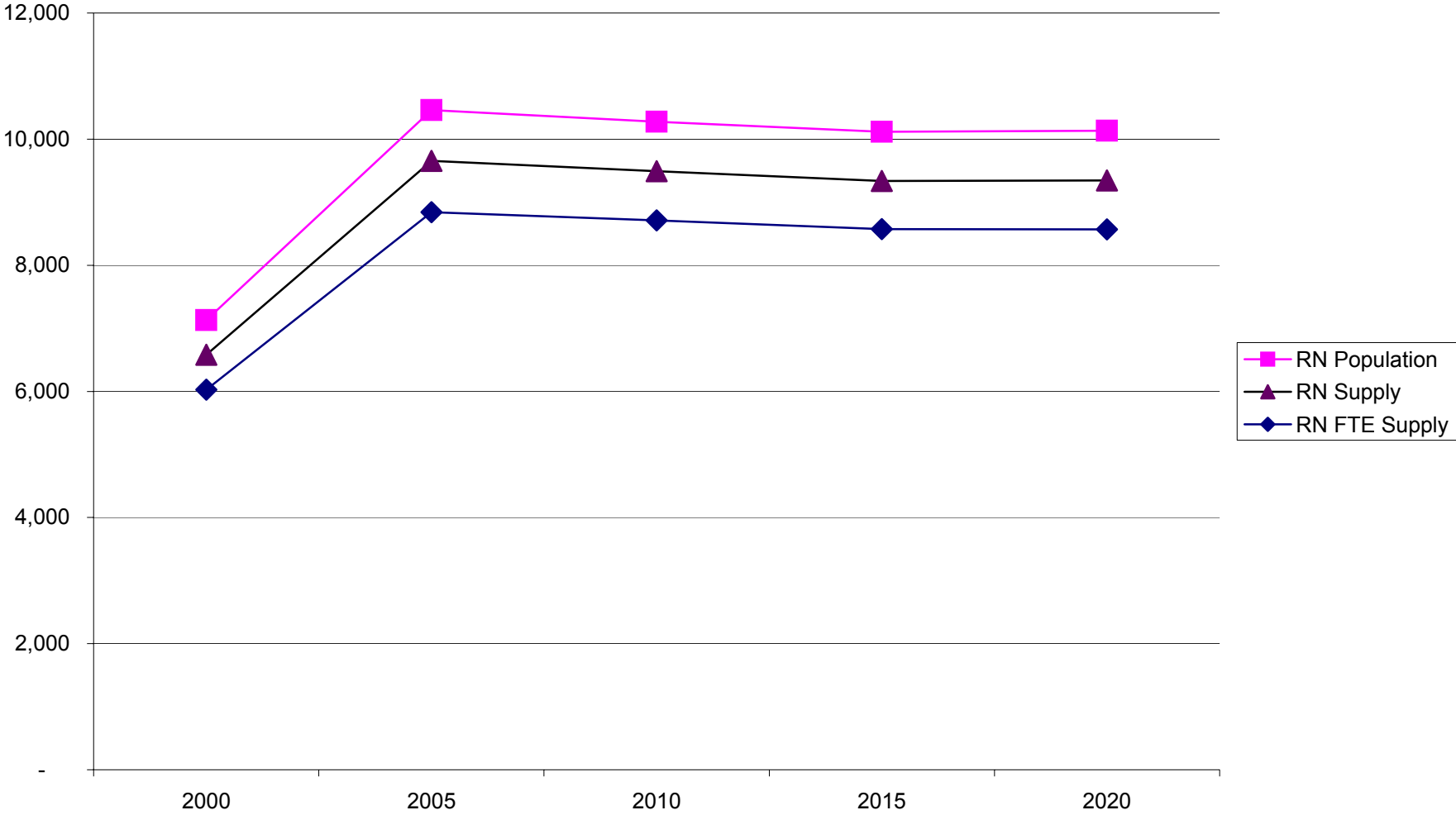


Figure 9. RN Population, Supply and FTE Supply- Age 55-59

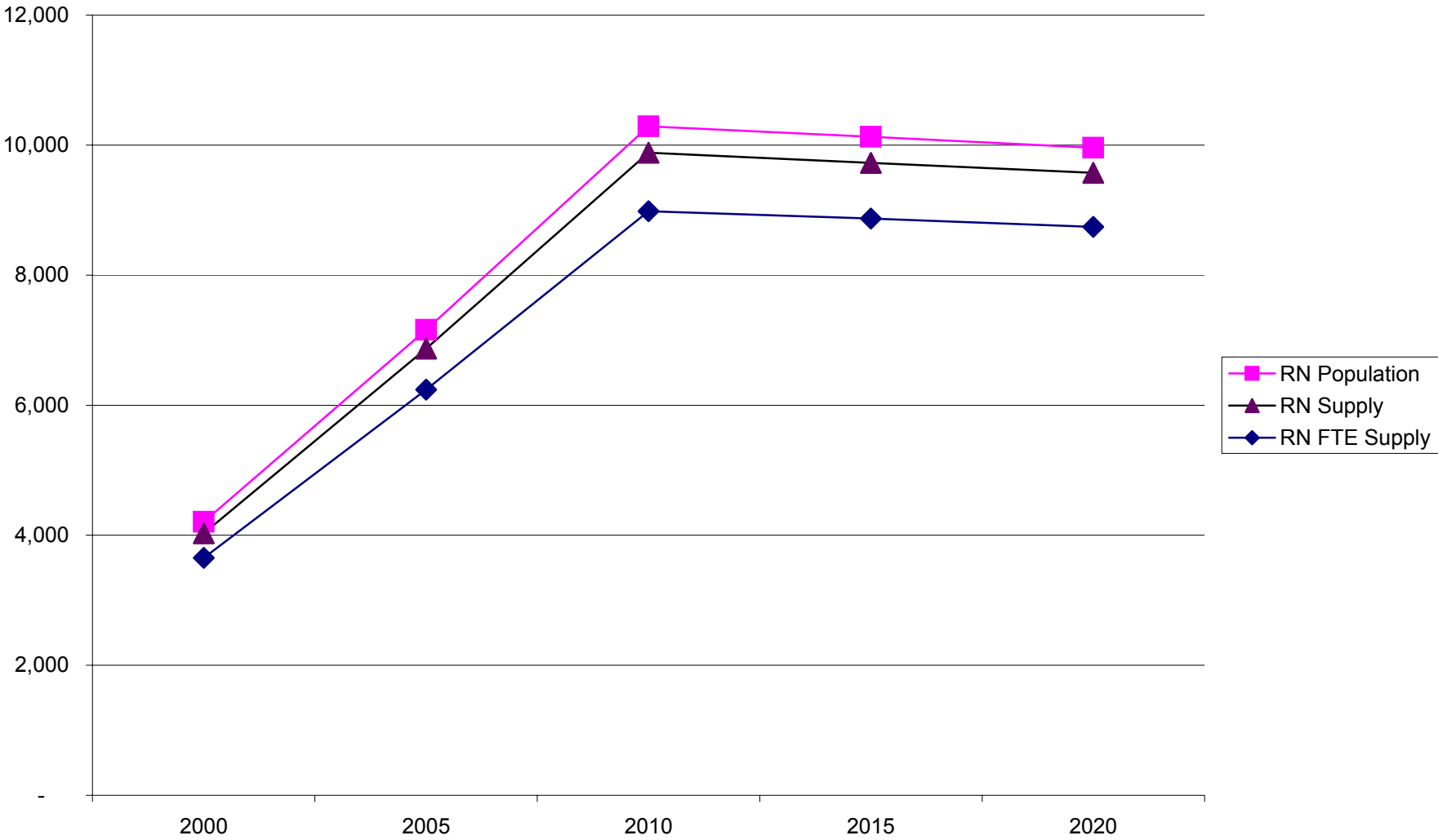


Figure 10. RN Population, Supply and FTE Supply- Age 60-64

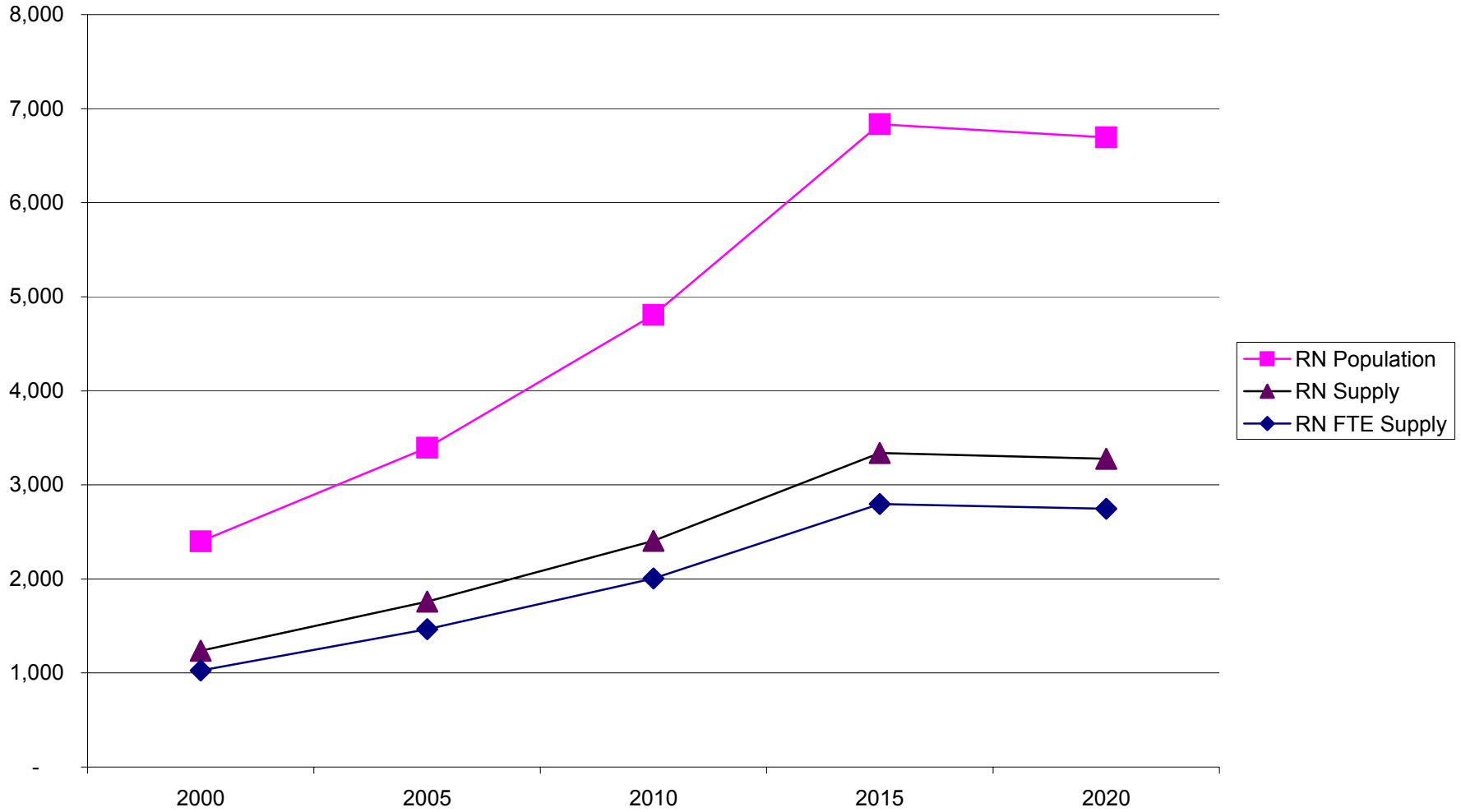


Figure 11. RN Population, Supply and FTE Supply- Age 65 and up

