

**TENNESSEE BOARD OF NURSING
STATE APPROVED PRACTICAL NURSING PROGRAMS
ANNUAL REPORT 2008**

**PREPARED BY
EAST TENNESSEE STATE UNIVERSITY
COLLEGE OF NURSING
CENTER FOR NURSING RESEARCH**

**DEBI T. PFORTMILLER, MA
KATHY MARTIN, PhD, MSN, RN, CNE**

**UNDER CONTRACT WITH
THE TENNESSEE CENTER FOR NURSING**

Table of Contents:

Highlights 3

1. ENROLLMENT AND GRADUATION DATA

Table 1a. Number of Classes, Admissions, and Enrollment 4

Table 1b. Enrollment Demographics 5

Table 1c. Number of Schools Reporting Significant Change (>10%) in Enrollment 5

Table 1d. Graduate Demographics 6

Table 1e. Four-Year Enrollment (as of October 31 of each year) and Graduation Trends 7

Figure 1e-1. Enrollment Trend Line 8

Figure 1e-2. Graduation Trend Line 9

2. Program Characteristics

Table 2a. Number of Schools that Offer Evening Classes, Weekend Classes, or Advanced Placement 10

Table 2b. Number of Schools that Maintain an Articulation Agreement(s) 11

3. CURRICULUM

Table 3a. Assessment/Proficiency Test for Graduating Students and Relationship with NCLEX Pass Rate 12

4. RESOURCES

Table 4a. Number of Schools Reporting Adequate Clinical Resources Available to Meet the Present Needs of Curriculum 13

Table 4b. Main Factors Perceived as Creating Limited Clinical Resources 13

Table 4c. Average Faculty-Student Clinical Ratio 13

5. EVALUATION

Table 5a. Average Graduation Rate 14

Table 5b. Four-Year Average Graduation Rate Trend 15

Figure 5b. Average Graduation Rate Trend Line 16

Table 5c. Average Placement Rate 17

Table 5d. Four-Year Average Placement Rate Trend 18

Figure 5d. Average Placement Rate Trend Line 19

6. FACULTY SUMMARY

Table 6a. Faculty Status 20

Table 6b. Faculty Demographics for Full-time Faculty 21

Table 6c. Faculty Demographics for Part-time Faculty 22

Table 6d. Number of Budgeted, Unfilled Full-time Nursing Faculty Positions 23

Highlights

- The findings in this report are based on the 19 Tennessee Board of Nursing state approved Practical Nursing programs. The programs were surveyed in Fall 2008 and the report is based upon October 2008 data.

Enrollment

- A total of 1,824 students are enrolled in a total of 68 classes offered by the nineteen Practical Nursing programs; 9.2% are male and 14.6% are from racial and ethnic minorities.
- Four programs (21.1%) reported a significant increase (>10%) in enrollment since October 31, 2007.
- Seventeen of the 19 Practical Nursing programs reported having 1,318 qualified applicants who were not admitted.
- Only one program could have accepted more students.
- There was a 6.4% increase in enrollments from 2007 ($p=.790$).
- There was a significant increase of 25.4% in enrollments from 2005 ($p=.034$).

Graduations

- A total of 1,441 students graduated from the Tennessee Practical Nursing programs; 7.8% were male and 15.1% were from racial and ethnic minorities.
- There was a 4.4% increase in the number of graduates from 2006-2007 ($p=.539$).
- There was a significant increase of 25.3% in the number of graduates from 2004-2005 ($p=.005$).

Program Characteristics

- Seven programs (36.8%) offer evening classes.
- Two programs (10.5%) offer weekend classes.
- Eight programs (42.1%) offer advanced placement.
- Twelve programs (63.2%) maintain articulation agreement(s).

Graduation and Placement Rates

- The average graduation rate from November 1, 2007 – October 31, 2008 for all 19 Practical Nursing programs is 70.3% with a range of 47.0-96.0%.
- The two-year trend shows a 2.5% decrease in graduation rates ($p=.501$).
- The four-year trend shows a 5.1% increase in graduation rates ($p=.203$).
- The average placement rate for the 2007-2008 classes, within six months of graduation, is 88.6% with a range of 65.0-100%.
- The two-year trend shows a significant 6.0% decrease in placement rates ($p=.020$).
- The four-year trend shows a significant 6.9% decrease in placement rates ($p=.026$).

Faculty Summary

- A total of 193 faculty staff the nineteen Practical Nursing programs in Tennessee; 58.0% are full-time and 42.0% are part-time; 4.1% are male and 7.3% are from racial and ethnic minorities.
- There were two (2) reported budgeted, unfilled full-time nursing faculty positions for the current year of November 1, 2008 – October 31, 2008.
- The average faculty-student clinical ratio is 1:10.

1. ENROLLMENT AND GRADUATION DATA

**Table 1a. Number of Classes, Admissions, and Enrollment as of October 31, 2008;
Number of Graduates November 1, 2007-October 31, 2008**

Practical Nursing Program	Number of Classes	Number of Admissions	Number Enrolled	Number of Graduates
Appalachian Regional	4	116	78	137
Blount Memorial Hospital	2	47	47	36
Chattanooga State	3	105	97	84
Four Rivers Regional	8	190	147	116
Jackson Regional	6	174	128	111
Plateau-Valley Regional	2	191	152	
South Central Regional	2	28	23	24
Tennessee Valley Regional	7	201	178	149
TTC at Athens	1	35	35	40
TTC at Crossville				50
TTC at Dickson	3	103	88	63
TTC at Elizabethton	3	202	155	117
TTC at Hartsville	2	62	53	46
TTC at Hohenwald	4	86	86	74
TTC at Knoxville	3	125	104	76
TTC at Livingston	3	124	110	58
TTC at Memphis	2	99	59	68
TTC at Morristown	4	96	73	59
TTC at Nashville	4	130	112	61
TTC at Paris	5	126	99	72
TOTAL	68	2240	1824	1441

Table 1b. Enrollment Demographics as of October 31, 2008

Practical Nursing Program	TE ^a	Gender		Race						
		F ^b	M ^c	AI/AN ^d	Asian	Black	Hispanic	White	Other	NonUS ^e
Appalachian Regional	78	67	11	0	0	0	0	78	0	0
Blount Memorial Hospital ^f	47	36	9	0	0	3	0	44	0	0
Chattanooga State	97	87	10	0	3	19	2	73	0	0
Four Rivers Regional	147	140	7	0	1	32	4	110	0	0
Jackson Regional ^f	128	126	6	0	0	32	0	96	0	0
Plateau-Valley Regional	152	134	18	0	0	2	1	149	0	0
South Central Regional	23	20	3	0	0	1	0	18	4	0
Tennessee Valley Regional	178	160	18	0	0	8	1	163	0	6
TTC at Athens ^f	35	38	2	0	0	2	0	33	0	0
TTC at Dickson	88	85	3	0	0	7	0	81	0	0
TTC at Elizabethton	155	139	16	0	1	7	1	143	1	2
TTC at Hartsville	53	48	5	0	0	2	1	50	0	0
TTC at Hohenwald	86	72	14	0	0	2	2	82	0	0
TTC at Knoxville	104	92	12	0	0	16	3	83	2	0
TTC at Livingston ^f	110	99	11	0	1	0	0	106	0	0
TTC at Memphis	59	57	2	0	0	51	0	8	0	0
TTC at Morristown	73	67	6	0	1	1	0	71	0	0
TTC at Nashville ^f	112	103	9	1	2	28	1	78	2	1
TTC at Paris	99	93	6	0	0	7	0	92	0	0
TOTAL	1824	1663	168	1	9	220	16	1558	9	9
PERCENTAGE		91.2%	9.2%	0.1%	0.5%	12.1%	0.9%	85.4%	0.5%	0.5%

^aTE=Total Enrollment;

^bF=Female; ^cM=Male;

^dAI/AN=American Indian/Alaskan Native; ^eNonUS=Non US Resident

^fAs reported by respondent

Table 1c. Number of Schools Reporting Significant Change (>10%) in Enrollment since October 31, 2007 and Expected Enrollment Changes in Coming Year

	Number of Schools Reporting Significant Change in Enrollment n(%) of 19	Number of Schools Reporting Expected Enrollment Change in Coming Year n(%) of 19
Increase	4 (21.1)	3 (15.8)
Decrease	3 (15.8)	1 (5.3)
No significant change/ Expected to remain the same	12 (63.2)	15 (78.9)

Table 1d. Graduate Demographics from November 1, 2007-October 31, 2008

Practical Nursing Program	Total Graduates	Gender		Race						
		F	M	AI/AN	Asian	Black	Hispanic	White	Other	NonUS
Appalachian Regional	137	125	12	0	0	3	0	134	0	0
Blount Memorial Hospital	36	32	4	0	0	1	0	35	0	0
Chattanooga State	84	80	4	0	1	19	2	62	0	0
Four Rivers Regional	116	110	6	1	0	23	0	92	0	0
Jackson Regional	111	102	9	0	0	22	1	88	0	0
South Central Regional	24	23	1	0	0	4	0	18	2	0
Tennessee Valley Regional	149	142	7	0	0	7	0	140	0	2
TTC at Athens	40	38	2	0	0	1	0	39	0	0
TTC at Crossville	50	48	2	0	0	1	0	49	0	0
TTC at Dickson	63	59	4	0	0	7	0	56	0	0
TTC at Elizabethton	117	99	18	2	0	3	2	110	0	0
TTC at Hartsville	46	41	5	0	0	3	3	43	0	0
TTC at Hohenwald	74	70	4	1	1	6	2	64	0	0
TTC at Knoxville	76	67	9	0	1	12	0	63	0	0
TTC at Livingston	58	53	5	0	1	0	0	57	0	0
TTC at Memphis	68	64	4	0	0	62	0	6	0	0
TTC at Morristown	59	51	8	0	0	1	1	57	0	0
TTC at Nashville	61	56	5	0	0	16	0	45	0	1
TTC at Paris	72	69	3	0	0	6	0	66	0	0
TOTAL	1441	1329	112	4	4	197	11	1224	2	3
PERCENTAGE		92.2%	7.8%	0.3%	0.3%	13.7%	0.8%	84.9%	0.1%	0.2%

Table 1e. Four-Year Enrollment (as of October 31 of each year) and Graduation Trends

Practical Nursing Program	Enrollment				Graduates			
	2005	2006	2007	2008	2004-2005	2005-2006	2006-2007	2007-2008
Appalachian Regional	77	134	150	78	99	62	102	137
Blount Memorial Hospital	41	44	38	47	36	39	43	36
Chattanooga State	74	91	85	97	74	64	68	84
Four Rivers Regional	79	99	118	147	78	53	86	116
Jackson Regional	139	144	135	128	101	99	118	111
Plateau-Valley Regional				152				
South Central Regional	27	66	25	23	22	23	61	24
Tennessee Valley Regional	130	186	171	178	143	123	167	149
TTC at Athens	32	26	43	35	35	28	22	40
TTC at Crossville	40	49	68		18	37	29	50
TTC at Dickson	74	77	72	88	55	64	69	63
TTC at Elizabethton	185	172	144	155	114	106	156	117
TTC at Hartsville	26	29	50	53	26	25	29	46
TTC at Hohenwald	59	60	85	86	54	48	39	74
TTC at Knoxville	35	54	83	104	27	26	56	76
TTC at Livingston	93	100	113	110	69	85	85	58
TTC at Memphis	61	74	78	59	8	57	69	68
TTC at Morristown	81	70	71	73	56	68	56	59
TTC at Nashville	107	93	91	112	84	84	56	61
TTC at Paris	95	125	95	99	51	97	69	72
TOTAL	1455	1693	1715	1824	1150	1188	1380	1441
PERCENTAGE CHANGE		16.4%	1.3%	6.4%		3.3%	16.2%	4.4%

Figure 1e-1. Enrollment Trend Line
(Enrollment as of October 31 of each year)

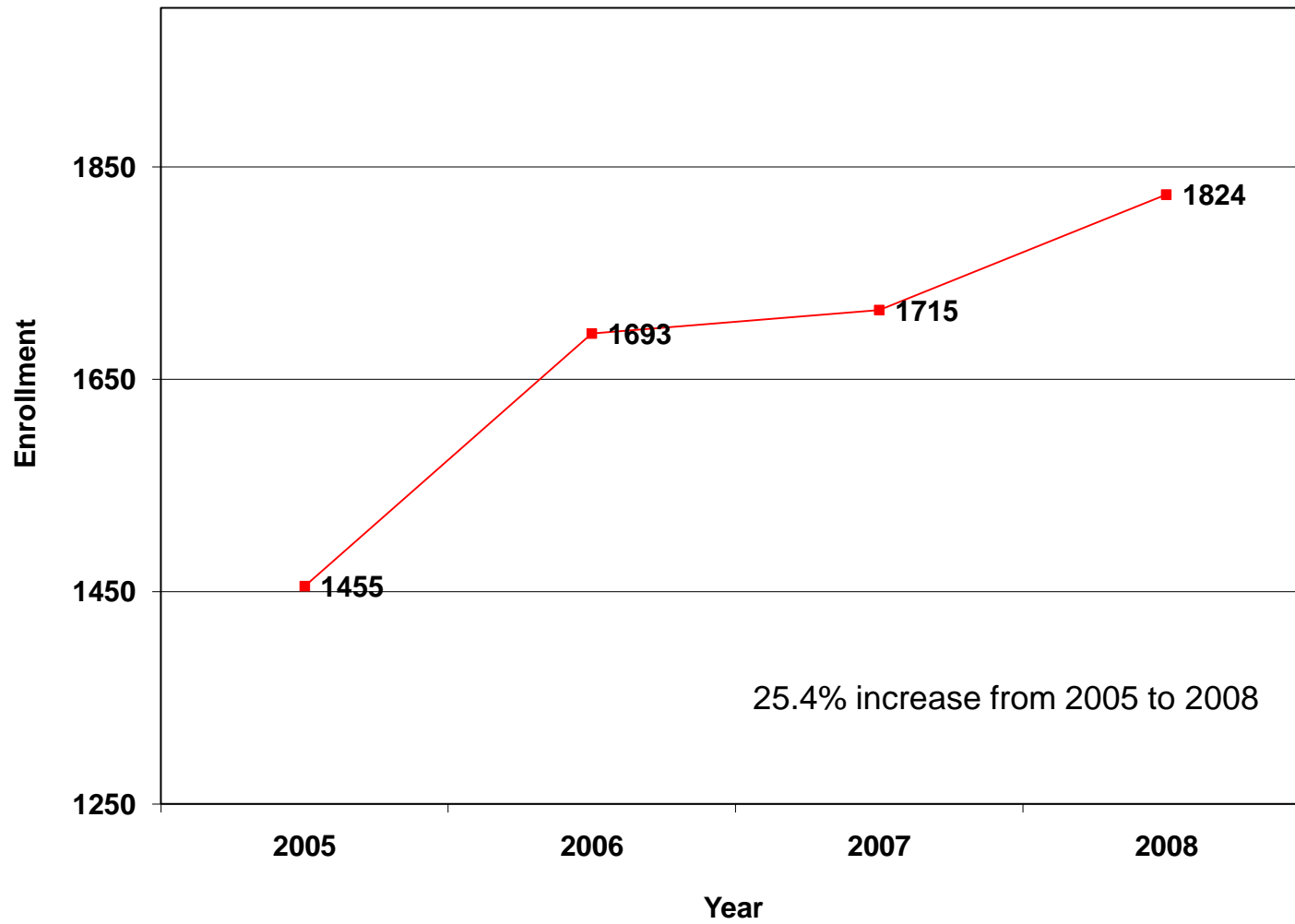
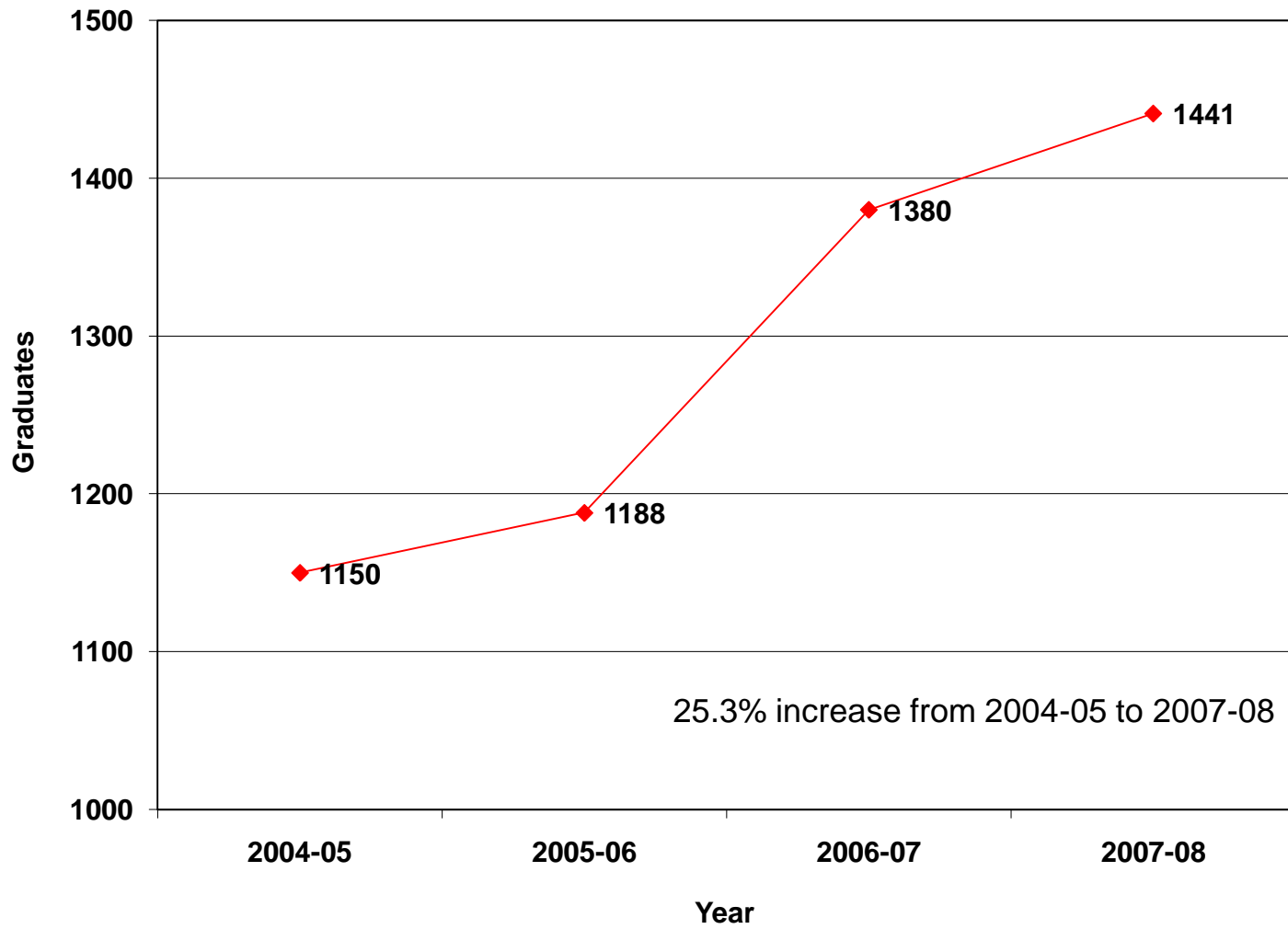


Figure 1e-2. Graduation Trend Line



2. Program Characteristics

Table 2a. Number of Schools that Offer Evening Classes, Weekend Classes, or Advanced Placement

Practical Nursing Program	Evening classes	Weekend classes	Advanced placement
Appalachian Regional	✓		
Blount Memorial Hospital			
Chattanooga State	✓		✓
Four Rivers Regional	✓	✓	✓
Jackson Regional			
Plateau-Valley Regional	✓		
South Central Regional			✓
Tennessee Valley Regional	✓		
TTC at Athens			
TTC at Dickson			
TTC at Elizabethton			✓
TTC at Hartsville			
TTC at Hohenwald			
TTC at Knoxville			
TTC at Livingston			
TTC at Memphis			✓
TTC at Morristown			✓
TTC at Nashville	✓	✓	✓
TTC at Paris	✓		✓
TOTAL	7 of 19 Schools	2 of 19 Schools	8 of 19 Schools

**Table 2b. Number of Schools that Maintain an Articulation Agreement(s)
with an Associate Degree or Baccalaureate Degree Program**

Practical Nursing Program	Maintain Articulation Agreement(s)
Appalachian Regional	
Blount Memorial Hospital	
Chattanooga State	✓
Four Rivers Regional	✓
Jackson Regional	
Plateau-Valley Regional	
South Central Regional	✓
Tennessee Valley Regional	✓
TTC at Athens	✓
TTC at Dickson	
TTC at Elizabethton	✓
TTC at Hartsville	
TTC at Hohenwald	✓
TTC at Knoxville	✓
TTC at Livingston	✓
TTC at Memphis	✓
TTC at Morristown	✓
TTC at Nashville	
TTC at Paris	✓
TOTAL	12 of 19 Schools

3. CURRICULUM

Table 3a. Assessment/Proficiency Test for Graduating Students and Relationship with NCLEX Pass Rate

Practical Nursing Program	Test Required?	Name of test?	Relationship with NCLEX pass rate?
Appalachian Regional	✓	ATI	Yes
Blount Memorial Hospital	✓	Arnett Development	Yes
Chattanooga State	✓	Keytrain, NLN	Yes
Four Rivers Regional	✓	Springhouse, NCLEX	Yes
Jackson Regional	✓	ATI	Yes
Plateau-Valley Regional	✓	ATI	Yes
South Central Regional	✓	NLN	Yes
Tennessee Valley Regional	✓	Contemporary Learning	Yes
TTC at Athens	✓	HESI and ATI	Yes
TTC at Dickson	✓	ERI PN-CAT	No
TTC at Elizabethton	✓	ATI, PN-CAT	No
TTC at Hartsville	✓	ERI	Yes
TTC at Hohenwald	✓	ATI	Yes
TTC at Knoxville	✓	ATI	Yes
TTC at Livingston	✓	ERI, PN-CAT, LPN Assessment	Yes
TTC at Memphis	✓	ERI PN-CAT, NLN, ATI	Yes
TTC at Morristown		N/A	N/A
TTC at Nashville	✓	ERI and Contemporary Health System-Mock PN Testing	Yes
TTC at Paris	✓	HESI Inet	Yes
Total	18 of 19 Schools		Yes for 16 of 18 Schools Requiring Test

4. RESOURCES

Table 4a. Number of Schools Reporting Adequate Clinical Resources Available to Meet the Present Needs of Curriculum

	Number of schools reporting adequate resources n(%) of 19	Number of schools reporting inadequate resources n(%) of 19
Medical/Surgical Nursing	19 (100)	0 (0)
Maternal/Newborn Nursing	18 (94.7)	1 (5.3)
Nursing of Children	15 (78.9)	4 (21.1)
Mental Health Nursing	16 (84.2)	3 (15.8)
Geriatric Nursing	19 (100)	0 (0)
Specify Other:		
Home Health	1 (5.3)	
Clinical availability		1 (5.3)
Surgical nursing		1 (5.3)

Table 4b. Main Factors Perceived as Creating Limited Clinical Resources

Main factors perceived as creating resource shortage	Number of schools Rank 1 ^a n (%)	Number of schools Rank 2 ^a n (%)	Number of schools Rank 3 ^a n (%)
Clinical resources not available in the community	7 (36.8)	2 (10.5)	-
Too many RN students	5 (26.3)	3 (15.8)	2 (10.5)
Agencies not responsive to needs of school	1 (5.3)	3 (15.8)	3 (15.8)
Too many LPN students	-	1 (5.3)	2 (10.5)
No systematic scheduling and coordination	-	2 (10.5)	-
Contract not renewed	-	-	1 (5.3)

^aRespondents were asked to rank as 1 being the most important

Table 4c. Average Faculty-Student Clinical Ratio

Average Ratio	Ratio Range
1:10	1:8 – 1:12

5. EVALUATION

**Table 5a. Average Graduation Rate from
November 1, 2007-October 31, 2008**

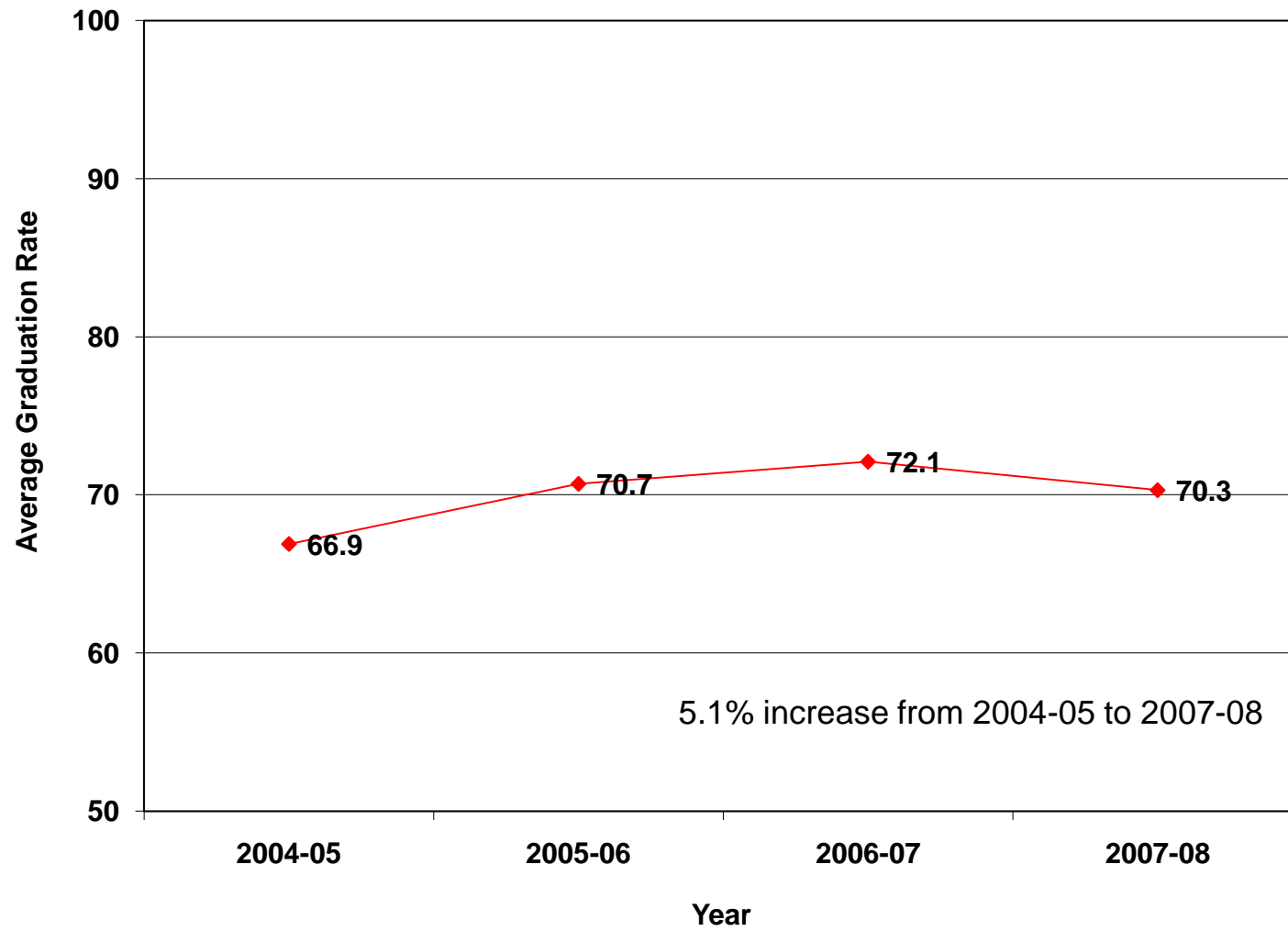
Practical Nursing Program	Average Graduation Rate (%)
Appalachian Regional	61.0
Blount Memorial Hospital	95.0
Chattanooga State	84.7
Four Rivers Regional	71.0
Jackson Regional	62.8
Plateau-Valley Regional	64.5
South Central Regional	86.2
Tennessee Valley Regional	74.9
TTC at Athens	96.0
TTC at Crossville	50.0
TTC at Dickson	70.3
TTC at Elizabethton	53.0
TTC at Hartsville	76.5
TTC at Hohenwald	83.8
TTC at Knoxville	59.0
TTC at Livingston	82.4
TTC at Memphis	68.0
TTC at Morristown	59.7
TTC at Nashville	47.0
TTC at Paris	61.1
OVERALL AVERAGE	70.3
RANGE	47.0-96.0

Table 5b. Four-Year Average Graduation Rate Trend

Practical Nursing Program	Average Graduation Rate (%)			
	2004-2005	2005-2006	2006-2007	2007-2008
Appalachian Regional	62.7	69.5	55.0	61.0
Blount Memorial Hospital	100	100	100	95.0
Chattanooga State	70.7	74.5	80.0	84.7
Four Rivers Regional	54.3	61.0	66.8	71.0
Jackson Regional	61.5	57.7	65.2	62.8
Plateau-Valley Regional				64.5
South Central Regional	84.5	71.9	88.3	86.2
Tennessee Valley Regional	70.8	73.8	78.4	74.9
TTC at Athens	86.1	88.0	81.0	96.0
TTC at Crossville	61.0	74.0	57.0	50.0
TTC at Dickson	72.7	68.7	78.3	70.3
TTC at Elizabethton	52.3	58.0	71.8	53.0
TTC at Hartsville	86.0	83.0	96.6	76.5
TTC at Hohenwald	95.0	80.6	88.0	83.8
TTC at Knoxville	50.0	50.0	48.5	59.0
TTC at Livingston	62.0	76.3	71.3	82.4
TTC at Memphis	30.0	63.3	71.5	68.0
TTC at Morristown	55.8	70.8	60.8	59.7
TTC at Nashville	48.5	55.2	42.8	47.0
TTC at Paris	67.8	66.5	68.4	61.1
OVERALL AVERAGE	66.9	70.7	72.1	70.3
Percent Change		5.7%	2.0%	(2.5%)

()=negative value

Figure 5b. Average Graduation Rate Trend Line



**Table 5c. Average Placement Rate for 2007-2008 Classes
Within Six Months of Graduation**

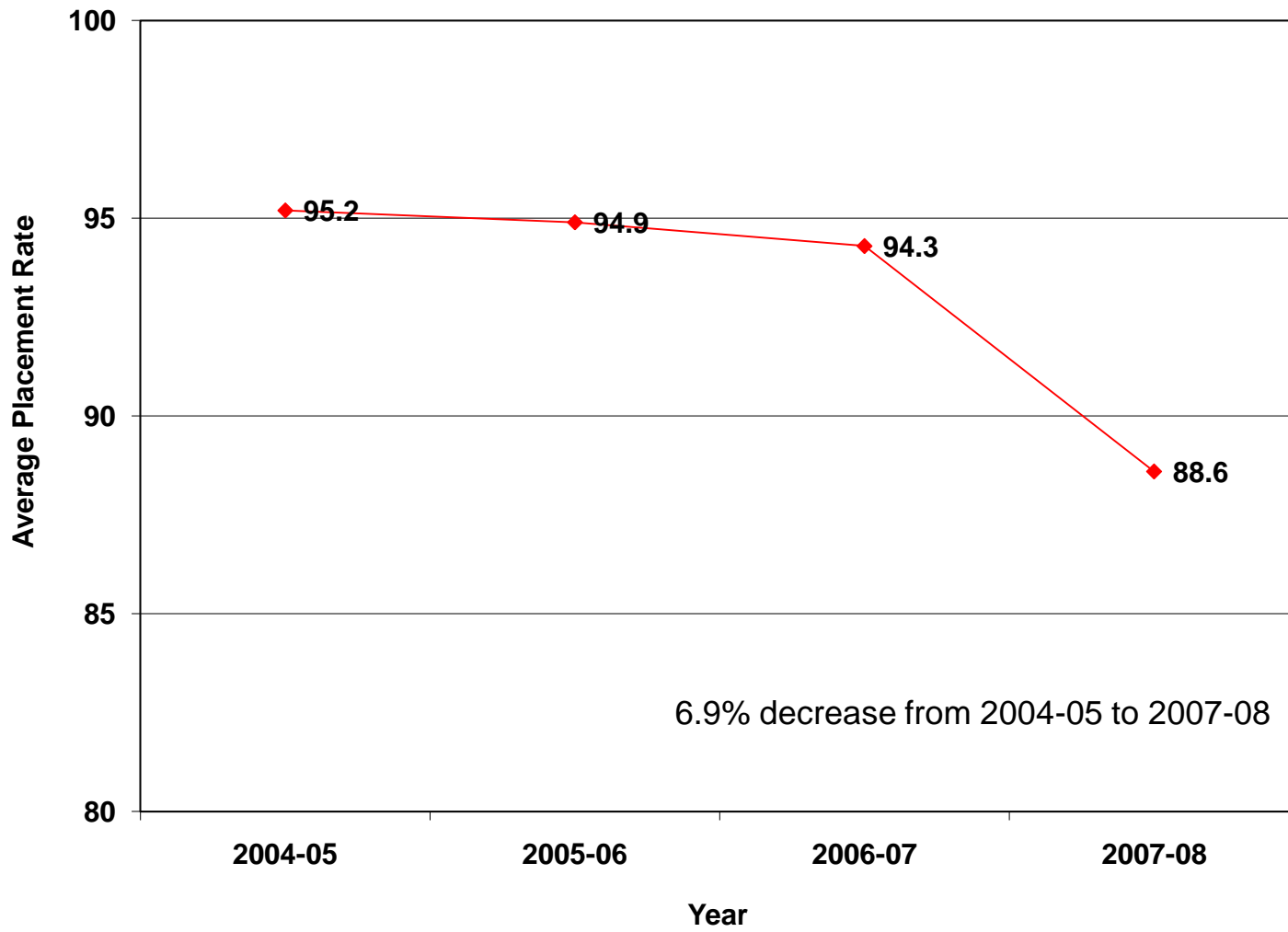
Practical Nursing Program	Average Placement Rate (%)
Appalachian Regional	89.0
Blount Memorial Hospital	.
Chattanooga State	89.0
Four Rivers Regional	93.9
Jackson Regional	92.8
Plateau-Valley Regional	81.5
South Central Regional	91.7
Tennessee Valley Regional	91.4
TTC at Athens	100.0
TTC at Crossville	76.0
TTC at Dickson	98.7
TTC at Elizabethton	100.0
TTC at Hartsville	100.0
TTC at Hohenwald	100.0
TTC at Knoxville	65.0
TTC at Livingston	82.6
TTC at Memphis	83.0
TTC at Morristown	100.0
TTC at Nashville	79.0
TTC at Paris	70.2
OVERALL AVERAGE	88.6
RANGE	65.0-100

Table 5d. Four-Year Average Placement Rate Trend

Practical Nursing Program	Average Placement Rate (%)			
	2004-2005	2005-2006	2006-2007	2007-2008
Appalachian Regional	96.0	95.0	92.9	89.0
Blount Memorial Hospital	100	.	100	.
Chattanooga State	95.9	87.5	91.0	89.0
Four Rivers Regional	99.5	98.0	100	93.9
Jackson Regional	87.7	93.5	93.5	92.8
Plateau-Valley Regional				81.5
South Central Regional	95.7	100	97.3	91.7
Tennessee Valley Regional	91.7	86.7	89.8	91.4
TTC at Athens	100	100	100	100.0
TTC at Crossville	96.5	92.0	97.0	76.0
TTC at Dickson	96.3	97.0	90.0	98.7
TTC at Elizabethton	100	99.0	100	100.0
TTC at Hartsville	92.0	100	96.6	100.0
TTC at Hohenwald	100	100	100	100.0
TTC at Knoxville	100	99.5	68.0	65.0
TTC at Livingston	97.3	94.6	93.2	82.6
TTC at Memphis	88.0	98.0	98.0	83.0
TTC at Morristown	98.8	100	100	100.0
TTC at Nashville	88.8	85.0	96.0	79.0
TTC at Paris	84.1	82.7	89.0	70.2
OVERALL AVERAGE	95.2	94.9	94.3	88.6
Percent Change		(0.3%)	(0.6%)	(6.0)

()=negative value

Figure 5d. Average Placement Rate Trend Line



6. FACULTY SUMMARY

Table 6a. Faculty Status for Current Year

Practical Nursing Program	Total Faculty	Status	
		Full-time	Part-time
Appalachian Regional	10	5	5
Blount Memorial Hospital	5	2	3
Chattanooga State	10	6	4
Four Rivers Regional	26	8	18
Jackson Regional	14	8	6
Plateau-Valley Regional	10	7	3
South Central Regional	3	3	0
Tennessee Valley Regional	16	8	8
TTC at Athens	4	2	2
TTC at Dickson	9	5	4
TTC at Elizabethton	18	9	9
TTC at Hartsville	4	3	1
TTC at Hohenwald	7	7	0
TTC at Knoxville	13	6	7
TTC at Livingston	7	6	1
TTC at Memphis	6	4	2
TTC at Morristown	8	7	1
TTC at Nashville	13	9	4
TTC at Paris	10	7	3
TOTAL	193	112	81
PERCENTAGE		58.0%	42.0%

Table 6b. Faculty Demographics for Full-time Faculty for Current Year

Practical Nursing Program	Total Faculty	Full-time Faculty	Gender		Race							
			Female	Male	AI/AN	Asian	Black	Hispanic	White	Other	NonUS	
Appalachian Regional	10	5	5	0	0	0	0	0	0	5	0	0
Blount Memorial Hospital	5	2	2	0	0	0	0	0	0	2	0	0
Chattanooga State	10	6	6	0	0	0	0	0	0	5	1	0
Four Rivers Regional	26	8	8	0	0	0	0	0	0	8	0	0
Jackson Regional	14	8	8	0	0	0	0	2	0	6	0	0
Plateau-Valley Regional	10	7	6	1	0	0	0	0	0	7	0	0
South Central Regional	3	3	3	0	0	0	0	0	0	3	0	0
Tennessee Valley Regional	16	8	8	0	0	0	0	0	0	8	0	0
TTC at Athens	4	2	2	0	0	0	0	0	0	2	0	0
TTC at Dickson	9	5	5	0	0	0	0	0	0	5	0	0
TTC at Elizabethton	18	9	9	0	0	0	0	0	0	9	0	0
TTC at Hartsville	4	3	2	1	0	0	0	0	0	3	0	0
TTC at Hohenwald	7	7	7	0	0	0	0	0	0	7	0	0
TTC at Knoxville	13	6	6	0	0	0	0	0	0	6	0	0
TTC at Livingston	7	6	6	0	0	0	0	0	0	6	0	0
TTC at Memphis	6	4	4	0	0	0	0	4	0	0	0	0
TTC at Morristown	8	7	7	0	0	0	0	0	0	7	0	0
TTC at Nashville	13	9	8	1	0	0	0	1	0	8	0	0
TTC at Paris	10	7	7	0	0	0	0	1	0	6	0	0
TOTAL	193	112	109	3	0	0	8	0	103	1	0	
PERCENTAGE^a			97.3%	2.7%	0.0%	0.0%	7.1%	0.0%	92.0%	0.9%	0.0%	

^aPercentage of Full-time Faculty

Table 6c. Faculty Demographics for Part-time Faculty for Current Year

Practical Nursing Program	Total Faculty	Part-time Faculty	Gender		Race							
			Female	Male	AI/AN	Asian	Black	Hispanic	White	Other	NonUS	
Appalachian Regional	10	5	5	0	0	0	0	0	0	5	0	0
Blount Memorial Hospital	5	3	3	0	0	0	0	0	0	3	0	0
Chattanooga State	10	4	4	0	0	0	0	0	0	4	0	0
Four Rivers Regional	26	18	17	1	0	0	2	0	0	16	0	0
Jackson Regional	14	6	5	1	0	0	0	0	0	6	0	0
Plateau-Valley Regional	10	3	3	0	0	0	0	0	0	3	0	0
South Central Regional	3	0	0	0	0	0	0	0	0	0	0	0
Tennessee Valley Regional	16	8	7	1	0	0	0	0	0	8	0	0
TTC at Athens	4	2	2	0	0	0	0	0	0	2	0	0
TTC at Dickson	9	4	4	0	0	0	0	0	0	4	0	0
TTC at Elizabethton	18	9	8	1	0	0	0	0	0	9	0	0
TTC at Hartsville	4	1	0	1	0	0	0	0	0	1	0	0
TTC at Hohenwald	7	0	0	0	0	0	0	0	0	0	0	0
TTC at Knoxville	13	7	7	0	0	0	0	0	0	7	0	0
TTC at Livingston	7	1	1	0	0	0	0	0	0	1	0	0
TTC at Memphis	6	2	2	0	0	1	1	0	0	0	0	0
TTC at Morristown	8	1	1	0	0	0	0	0	0	1	0	0
TTC at Nashville	13	4	4	0	0	0	1	0	0	3	0	0
TTC at Paris	10	3	3	0	0	0	0	0	0	3	0	0
TOTAL	193	81	76	5	0	1	4	0	0	76	0	0
PERCENTAGE^a			93.8%	6.2%	0.0%	1.2%	4.9%	0.0%	0.0%	93.8%	0.0%	0.0%

^aPercentage of Part-time Faculty

Table 6d. Number of Budgeted, Unfilled Full-time Nursing Faculty Positions for Current Year

Practical Nursing Program	Budgeted, unfilled full-time nursing faculty positions
Appalachian Regional	0
Blount Memorial Hospital	0
Chattanooga State	0
Four Rivers Regional	0
Jackson Regional	0
Plateau-Valley Regional	0
South Central Regional	0
Tennessee Valley Regional	0
TTC at Athens	1
TTC at Dickson	0
TTC at Elizabethton	0
TTC at Hartsville	0
TTC at Hohenwald	0
TTC at Knoxville	0
TTC at Livingston	0
TTC at Memphis	1
TTC at Morristown	0
TTC at Nashville	0
TTC at Paris	0
TOTAL	2