

**TENNESSEE BOARD OF NURSING
STATE APPROVED PRACTICAL NURSING PROGRAMS
ANNUAL REPORT 2007**

**PREPARED BY
EAST TENNESSEE STATE UNIVERSITY
COLLEGE OF NURSING
CENTER FOR NURSING RESEARCH**

**PATRICIA L. SMITH, EDD, MSN, RN
DEBI T. PFORTMILLER, MA**

**UNDER CONTRACT WITH
THE TENNESSEE CENTER FOR NURSING**

Table of Contents:

Highlights.....	3
1. ENROLLMENT AND GRADUATION DATA	
Table 1a. Number of Classes, Admissions, Enrollment, and Graduates	4
Table 1b. Enrollment Demographics	5
Table 1c. Number of Schools Reporting Significant Change (>10%) in Enrollment.....	5
Table 1d. Graduate Demographics	6
Table 1e. Three Year Enrollment (as of October 31 of each year) and Graduation Trends.....	7
Figure 1e-1. Enrollment Trend Line.....	8
Figure 1e-2. Graduation Trend Line.....	9
2. PROGRAM CHARACTERISTICS	
Table 2a. Number of Schools that Offer Evening Classes, Weekend Classes, or Advanced Placement	10
Table 2b. Number of Schools that Maintain an Articulation Agreement(s)	11
3. CURRICULUM	
Table 3a. Assessment/Proficiency Test for Graduating Students and Relationship with NCLEX Pass Rate	12
4. RESOURCES	
Table 4a. Number of Schools Reporting Adequate Clinical Resources Available to Meet the Present Needs of Curriculum	13
Table 4b. Main Factors Perceived as Creating Limited Clinical Resources	13
Table 4c. Average Faculty-Student Clinical Ratio.....	13
5. EVALUATION	
Table 5a. Average Graduation Rate.....	14
Table 5b. Three Year Average Graduation Rate Trend.....	15
Figure 5b. Average Graduation Rate Trend Line	16
Table 5c. Average Placement Rate.....	17
Table 5d. Three Year Average Placement Rate Trend.....	18
Figure 5d. Average Placement Rate Trend Line.....	19
6. FACULTY SUMMARY	
Table 6a. Faculty Status.....	20
Table 6b. Faculty Demographics for Full-time Faculty	21
Table 6c. Faculty Demographics for Part-time Faculty	22
Table 6d. Number of Budgeted, Unfilled Full-time Nursing Faculty Positions	23

Highlights

- The findings in this report are based on the 19 Tennessee Board of Nursing state approved Practical Nursing programs. The programs were surveyed in Fall 2007 and the report is based upon October 2007 data.

Enrollment

- A total of 1,715 students are enrolled in a total of 68 classes offered by the nineteen Practical Nursing programs; 8% are male and 16.4% are from racial and ethnic minorities.
- Six programs (31.6%) reported a significant increase (>10%) in enrollment since October 31, 2006.
- Sixteen of the 19 Practical Nursing programs reported having 1,227 qualified applicants who were not admitted.
- Only one program could have accepted more students.
- There was a 1.3% increase in enrollments from 2006 ($p=.802$).
- There was a significant increase of 17.9% in enrollments from 2005 ($p=.035$).

Graduations

- A total of 1,380 students graduated from the Tennessee Practical Nursing programs; 6.8% were male and 14.7% were from racial and ethnic minorities.
- There was a 16.2% increase in the number of graduates from 2005-2006 ($p=.078$).
- There was a significant increase of 20% in the number of graduates from 2004-2005 ($p=.023$).

Program Characteristics

- Eight programs (42%) offer evening classes.
- Four programs (21%) offer weekend classes.
- Nine programs (47%) offer advanced placement.
- Eleven programs (57.9%) maintain articulation agreement(s).

Graduation and Placement Rates

- The average graduation rate from November 1, 2006 – October 31, 2007 for all 19 Practical Nursing programs is 72.1% with a range of 42.8-100%.
- The two-year trend shows a 2.0% increase in graduation rates ($p=.544$).
- The three-year trend shows a 7.8% increase in graduation rates ($p=.066$).
- The average placement rate for the 2006-2007 classes, within six months of graduation, is 94.3% with a range of 68-100%.
- The two-year trend shows a 0.6% decrease in placement rates ($p=.664$).
- The three-year trend shows a 0.9% decrease in placement rates ($p=.675$).

Faculty Summary

- A total of 194 faculty staff the nineteen Practical Nursing programs in Tennessee; 63.4% are full-time and 36.6% are part-time; 3.6% are male and 8.8% are from racial and ethnic minorities.
- There were five (5) reported budgeted, unfilled full-time nursing faculty positions for the current year of November 1, 2007 – October 31, 2008.
- The average faculty-student clinical ratio is 1:10.

1. ENROLLMENT AND GRADUATION DATA

**Table 1a. Number of Classes, Admissions, and Enrollment as of October 31, 2007;
Number of Graduates November 1, 2006-October 31, 2007**

Practical Nursing Program	Number of Classes	Number of Admissions	Number Enrolled	Number of Graduates
Appalachian Regional	4	239	150	102
Blount Memorial Hospital	2	42	38	43
Chattanooga State	3	101	85	68
Four Rivers Regional	7	162	118	86
Jackson Regional	6	169	135	118
South Central Regional	2	25	25	61
Tennessee Valley Regional	7	208	171	167
TTC at Athens	1	45	43	22
TTC at Crossville	2	100	68	29
TTC at Dickson	3	90	72	69
TTC at Elizabethton	4	220	144	156
TTC at Hartsville	2	60	50	29
TTC at Hohenwald	5	88	85	39
TTC at Knoxville	3	125	83	56
TTC at Livingston	3	122	113	85
TTC at Memphis	2	94	78	69
TTC at Morristown	4	93	71	56
TTC at Nashville	3	128	91	56
TTC at Paris	5	126	95	69
TOTAL	68	2237	1715	1380

Table 1b. Enrollment Demographics as of October 31, 2007

Practical Nursing Program	TE ^a	Gender		Race						
		F ^b	M ^c	AI/AN ^d	Asian	Black	Hispanic	White	Other	NonUS ^e
Appalachian Regional	150	138	12	0	0	4	0	146	0	0
Blount Memorial Hospital	38	34	4	0	0	1	0	37	0	0
Chattanooga State	85	81	4	0	1	20	1	63	0	0
Four Rivers Regional	118	112	6	0	0	24	0	94	0	0
Jackson Regional	135	121	14	0	0	20	1	114	0	0
South Central Regional	25	24	1	0	0	1	0	21	0	3
Tennessee Valley Regional	171	164	7	0	0	11	1	159	0	0
TTC at Athens	43	40	3	0	0	2	0	41	0	0
TTC at Crossville ^f	68	37	2	1	0	0	0	38	0	0
TTC at Dickson	72	67	5	0	0	7	0	65	0	0
TTC at Elizabethton	144	120	24	3	0	5	2	134	0	0
TTC at Hartsville	50	44	6	0	0	4	0	46	0	0
TTC at Hohenwald ^f	85	80	5	1	1	6	1	79	0	0
TTC at Knoxville	83	75	8	1	1	10	1	69	1	0
TTC at Livingston	113	106	7	0	0	1	2	110	0	0
TTC at Memphis	78	70	8	0	0	72	0	6	0	0
TTC at Morristown	71	64	7	0	2	1	0	68	0	0
TTC at Nashville	91	80	11	0	0	28	0	63	0	0
TTC at Paris	95	91	4	0	0	12	2	81	0	0
TOTAL	1715	1548	138	6	5	229	11	1434	1	3
PERCENTAGE		90.3%	8.0%	0.3%	0.3%	13.4%	0.6%	83.6%	0.1%	0.2%

^aTE=Total Enrollment;

^bF=Female; ^cM=Male;

^dAI/AN=American Indian/Alaskan Native; ^eNonUS=Non US Resident

^fAs reported by respondent

Table 1c. Number of Schools Reporting Significant Change (>10%) in Enrollment since October 31, 2006 and Expected Enrollment Changes in Coming Year

	Number of Schools Reporting Significant Change in Enrollment n(%) of 19	Number of Schools Reporting Expected Enrollment Change in Coming Year n(%) of 19
Increase	6 (31.6)	4 (21.1)
Decrease	3 (15.8)	3 (15.8)
No significant change/ Expected to remain the same	10 (52.6)	12 (63.2)

Table 1d. Graduate Demographics from November 1, 2006-October 31, 2007

Practical Nursing Program	Total Graduates	Gender		Race						
		F	M	AI/AN	Asian	Black	Hispanic	White	Other	NonUS
Appalachian Regional	102	92	10	0	0	3	0	99	0	0
Blount Memorial Hospital	43	36	7	0	0	1	0	42	0	0
Chattanooga State	68	60	8	0	0	14	0	54	0	0
Four Rivers Regional	86	81	5	0	0	18	0	67	0	1
Jackson Regional	118	110	8	0	1	32	2	83	0	0
South Central Regional	61	56	5	1	0	2	0	57	0	1
Tennessee Valley Regional	167	161	6	0	0	8	2	157	0	0
TTC at Athens	22	22	0	0	0	1	0	21	0	0
TTC at Crossville	29	27	2	1	0	0	0	28	0	0
TTC at Dickson	69	62	7	0	1	11	1	56	0	0
TTC at Elizabethton	156	149	7	3	1	2	0	150	0	0
TTC at Hartsville	29	27	2	0	0	4	0	25	0	0
TTC at Hohenwald	39	34	5	0	2	1	0	36	0	0
TTC at Knoxville	56	55	1	0	0	6	0	50	0	0
TTC at Livingston	85	76	9	0	1	1	0	83	0	0
TTC at Memphis	69	65	4	0	0	64	0	5	0	0
TTC at Morristown	56	54	2	0	0	0	1	55	0	0
TTC at Nashville	56	53	3	0	0	11	1	44	0	0
TTC at Paris	69	66	3	0	0	1	3	65	0	0
TOTAL	1380	1286	94	5	6	180	10	1177	0	2
PERCENTAGE		93.2%	6.8%	0.4%	0.4%	13.0%	0.7%	85.3%	0.0%	0.1%

Table 1e. Three Year Enrollment (as of October 31 of each year) and Graduation Trends

Practical Nursing Program	Enrollment			Graduates		
	2005	2006	2007	2004-2005	2005-2006	2006-2007
Appalachian Regional	77	134	150	99	62	102
Blount Memorial Hospital	41	44	38	36	39	43
Chattanooga State	74	91	85	74	64	68
Four Rivers Regional	79	99	118	78	53	86
Jackson Regional	139	144	135	101	99	118
South Central Regional	27	66	25	22	23	61
Tennessee Valley Regional	130	186	171	143	123	167
TTC at Athens	32	26	43	35	28	22
TTC at Crossville	40	49	68	18	37	29
TTC at Dickson	74	77	72	55	64	69
TTC at Elizabethton	185	172	144	114	106	156
TTC at Hartsville	26	29	50	26	25	29
TTC at Hohenwald	59	60	85	54	48	39
TTC at Knoxville	35	54	83	27	26	56
TTC at Livingston	93	100	113	69	85	85
TTC at Memphis	61	74	78	8	57	69
TTC at Morristown	81	70	71	56	68	56
TTC at Nashville	107	93	91	84	84	56
TTC at Paris	95	125	95	51	97	69
TOTAL	1455	1693	1715	1150	1188	1380
PERCENTAGE CHANGE		16.4%	1.3%		3.3%	16.2%

Figure 1e-1. Enrollment Trend Line
(Enrollment as of October 31 of each year)

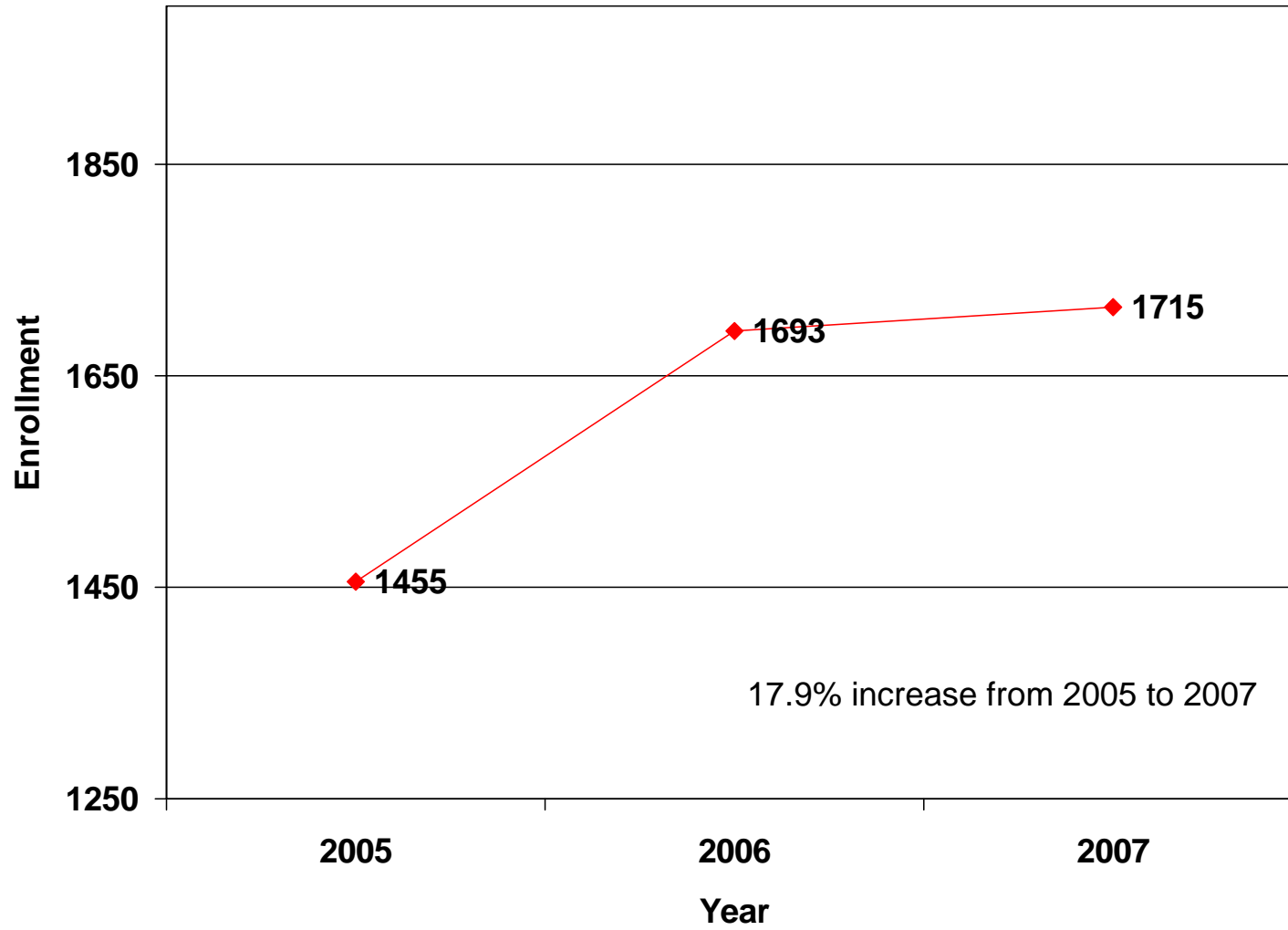
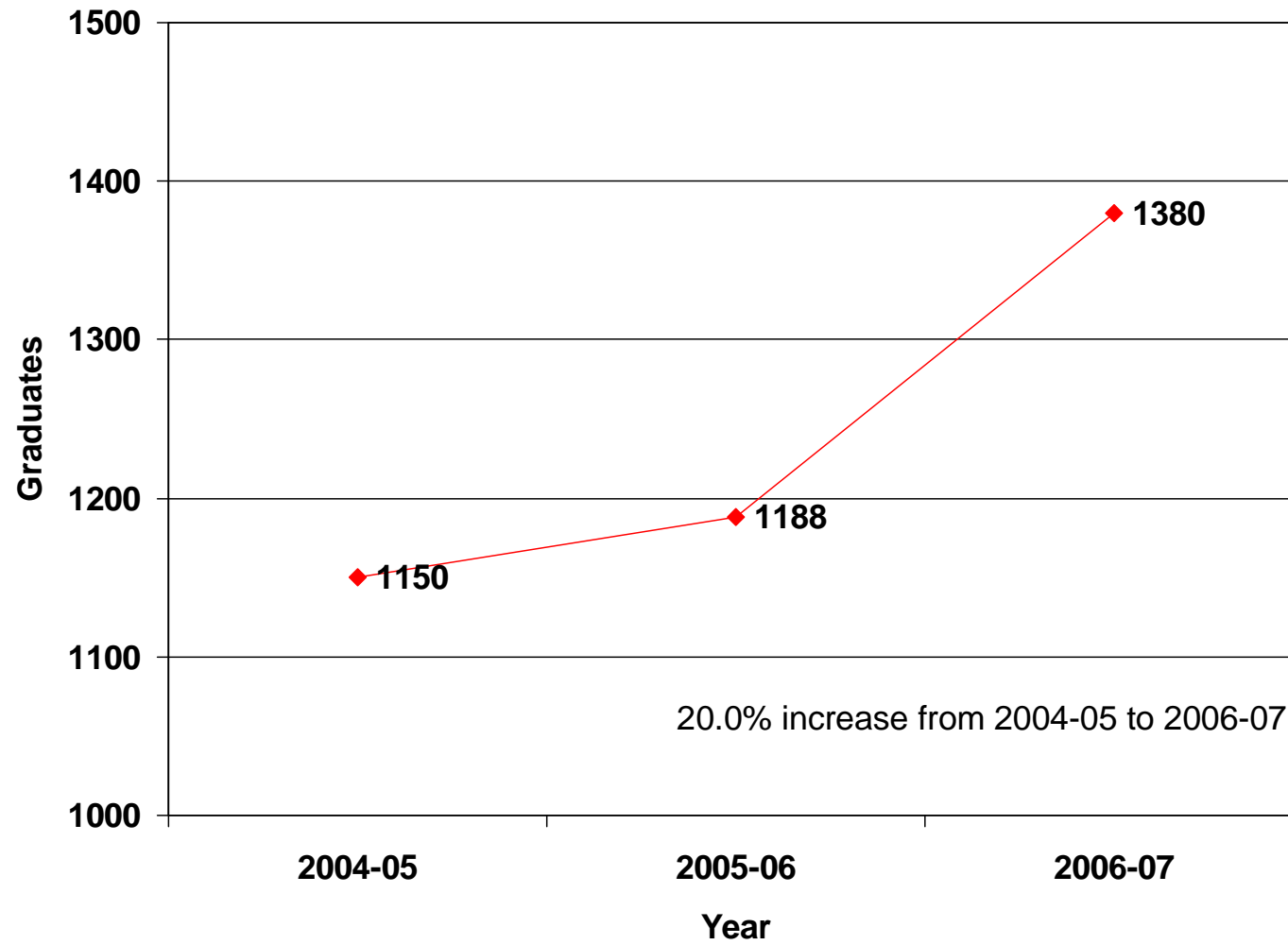


Figure 1e-2. Graduation Trend Line



2. PROGRAM CHARACTERISTICS

Table 2a. Number of Schools that Offer Evening Classes, Weekend Classes, or Advanced Placement

Practical Nursing Program	Evening classes	Weekend classes	Advanced placement
Appalachian Regional	✓		
Blount Memorial Hospital			
Chattanooga State	✓		✓
Four Rivers Regional	✓	✓	✓
Jackson Regional			
South Central Regional			✓
Tennessee Valley Regional	✓	✓	
TTC at Athens			
TTC at Crossville	✓	✓	✓
TTC at Dickson			
TTC at Elizabethton	✓		✓
TTC at Hartsville			
TTC at Hohenwald			
TTC at Knoxville			
TTC at Livingston			
TTC at Memphis			✓
TTC at Morristown			✓
TTC at Nashville	✓	✓	✓
TTC at Paris	✓		✓
TOTAL	8 of 19 Schools	4 of 19 Schools	9 of 19 Schools

**Table 2b. Number of Schools that Maintain an Articulation Agreement(s)
with an Associate Degree or Baccalaureate Degree Program**

Practical Nursing Program	Maintain Articulation Agreement(s)
Appalachian Regional	
Blount Memorial Hospital	
Chattanooga State	✓
Four Rivers Regional	✓
Jackson Regional	
South Central Regional	
Tennessee Valley Regional	✓
TTC at Athens	✓
TTC at Crossville	✓
TTC at Dickson	
TTC at Elizabethton	✓
TTC at Hartsville	
TTC at Hohenwald	✓
TTC at Knoxville	
TTC at Livingston	✓
TTC at Memphis	✓
TTC at Morristown	✓
TTC at Nashville	
TTC at Paris	✓
TOTAL	11 of 19 Schools

3. CURRICULUM

Table 3a. Assessment/Proficiency Test for Graduating Students and Relationship with NCLEX Pass Rate

Practical Nursing Program	Test Required?	Name of test?	Relationship with NCLEX pass rate?
Appalachian Regional	✓	ATI PN Predictor Test	Yes
Blount Memorial Hospital	✓	Arnett Development Testing	Yes
Chattanooga State		N/A	N/A
Four Rivers Regional	✓	Springhouse	Yes
Jackson Regional	✓	ATI Comprehensive Assessment	No
South Central Regional	✓	NLN Comprehensive	Yes
Tennessee Valley Regional	✓	Contemporary Learning	Yes
TTC at Athens	✓	HESI and ATI	Yes
TTC at Crossville	✓	ATI	Not enough data to answer
TTC at Dickson		N/A	N/A
TTC at Elizabethton	✓	PN-CAT and ATI	No
TTC at Hartsville	✓	ERI	Yes
TTC at Hohenwald	✓	ATI	Yes
TTC at Knoxville	✓	NLN Comprehensive	Yes
TTC at Livingston	✓	ERI	Yes
TTC at Memphis	✓	ERI, PN-CAT and ATI	Yes
TTC at Morristown		N/A	N/A
TTC at Nashville	✓	ERI and Contemporary Health System Mock PN Testing	Yes
TTC at Paris		N/A	N/A
Total	15 of 19 Schools		Yes for 12 of 15 Schools Requiring Test

4. RESOURCES

Table 4a. Number of Schools Reporting Adequate Clinical Resources Available to Meet the Present Needs of Curriculum

	Number of schools reporting adequate resources n(%) of 19	Number of schools reporting inadequate resources n(%) of 19
Medical/Surgical Nursing	17 (89.5)	2 (10.5)
Maternal/Newborn Nursing	17 (89.5)	2 (10.5)
Nursing of Children	15 (78.9)	4 (21.1)
Mental Health Nursing	16 (84.2)	3 (15.8)
Geriatric Nursing	18 (94.7)	1 (5.3)
Specify Other:		
Home Health	1 (5.3)	

Table 4b. Main Factors Perceived as Creating Limited Clinical Resources

Main factors perceived as creating resource shortage	Number of schools Rank 1 ^a n (%)	Number of schools Rank 2 ^a n (%)	Number of schools Rank 3 ^a n (%)
Clinical resources not available in the community	7 (36.8)	-	1 (5.3)
Too many RN students	4 (21.1)	5 (26.3)	-
Agencies not responsive to needs of school	-	2 (10.5)	-
Too many LPN students	-	-	2 (10.5)
No systematic scheduling and coordination	-	-	2 (10.5)
Contract not renewed	-	-	1 (5.3)
Specify Other:			
If RN and LPN students on same unit, hospital staff more willing to work with RN students	-	1 (5.3)	-
Local hospitals with pediatric facilities do not hire LPNs to work in facility. Use physicians offices and schools to meet requirements.	-	-	1 (5.3)

^aRespondents were asked to rank as 1 being the most important

Table 4c. Average Faculty-Student Clinical Ratio

Average Ratio	Ratio Range
1:10	1:8 – 1:12

5. EVALUATION

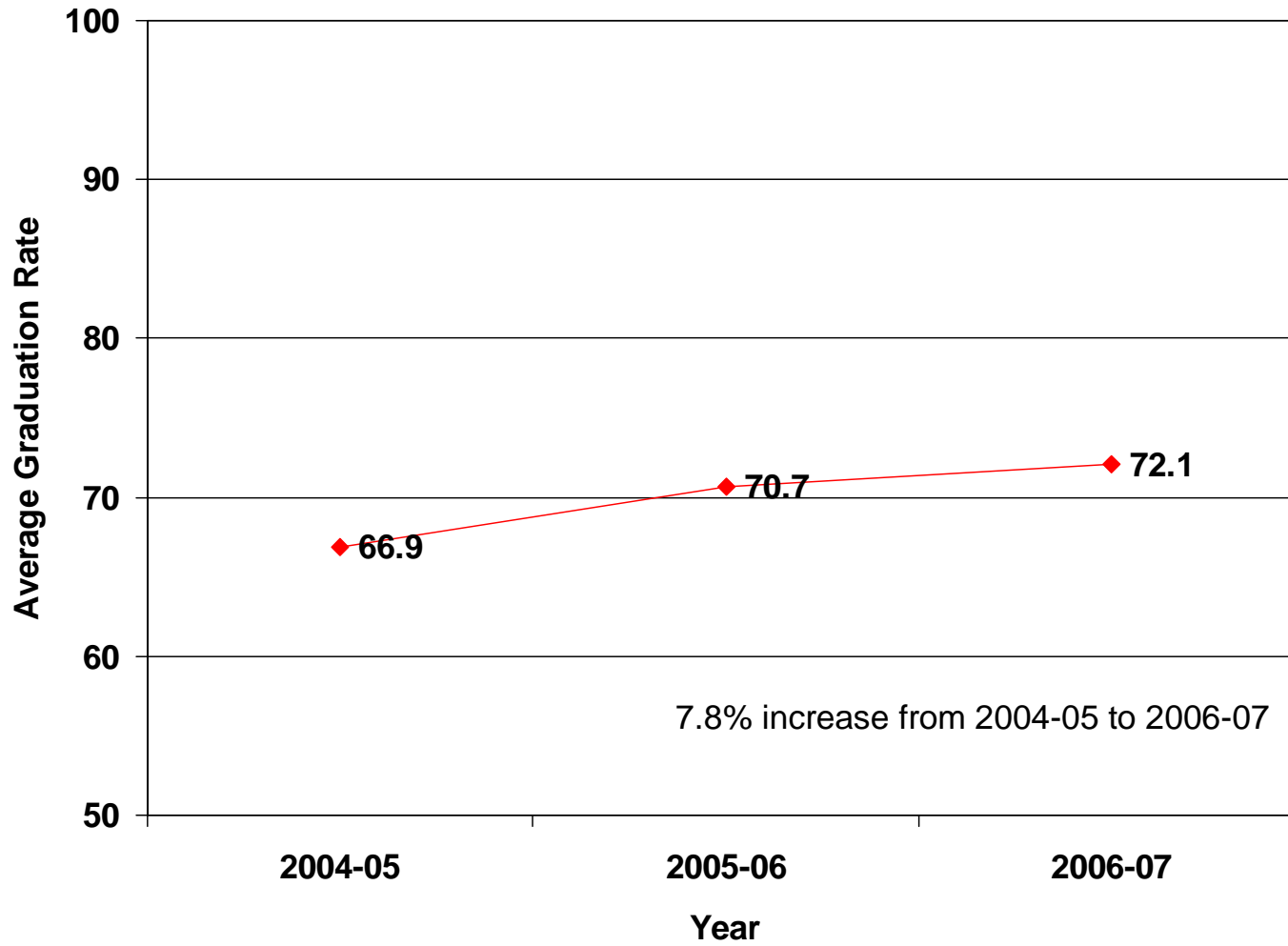
**Table 5a. Average Graduation Rate from
November 1, 2006-October 31, 2007**

Practical Nursing Program	Average Graduation Rate (%)
Appalachian Regional	55.0
Blount Memorial Hospital	100
Chattanooga State	80.0
Four Rivers Regional	66.8
Jackson Regional	65.2
South Central Regional	88.3
Tennessee Valley Regional	78.4
TTC at Athens	81.0
TTC at Crossville	57.0
TTC at Dickson	78.3
TTC at Elizabethton	71.8
TTC at Hartsville	96.6
TTC at Hohenwald	88.0
TTC at Knoxville	48.5
TTC at Livingston	71.3
TTC at Memphis	71.5
TTC at Morristown	60.8
TTC at Nashville	42.8
TTC at Paris	68.4
OVERALL AVERAGE	72.1
RANGE	42.8-100

Table 5b. Three Year Average Graduation Rate Trend

Practical Nursing Program	Average Graduation Rate (%)		
	2004-2005	2005-2006	2006-2007
Appalachian Regional	62.7	69.5	55.0
Blount Memorial Hospital	100	100	100
Chattanooga State	70.7	74.5	80.0
Four Rivers Regional	54.3	61.0	66.8
Jackson Regional	61.5	57.7	65.2
South Central Regional	84.5	71.9	88.3
Tennessee Valley Regional	70.8	73.8	78.4
TTC at Athens	86.1	88.0	81.0
TTC at Crossville	61.0	74.0	57.0
TTC at Dickson	72.7	68.7	78.3
TTC at Elizabethton	52.3	58.0	71.8
TTC at Hartsville	86.0	83.0	96.6
TTC at Hohenwald	95.0	80.6	88.0
TTC at Knoxville	50.0	50.0	48.5
TTC at Livingston	62.0	76.3	71.3
TTC at Memphis	30.0	63.3	71.5
TTC at Morristown	55.8	70.8	60.8
TTC at Nashville	48.5	55.2	42.8
TTC at Paris	67.8	66.5	68.4
OVERALL AVERAGE	66.9	70.7	72.1
Percent Change		5.7%	2.0%

Figure 5b. Average Graduation Rate Trend Line



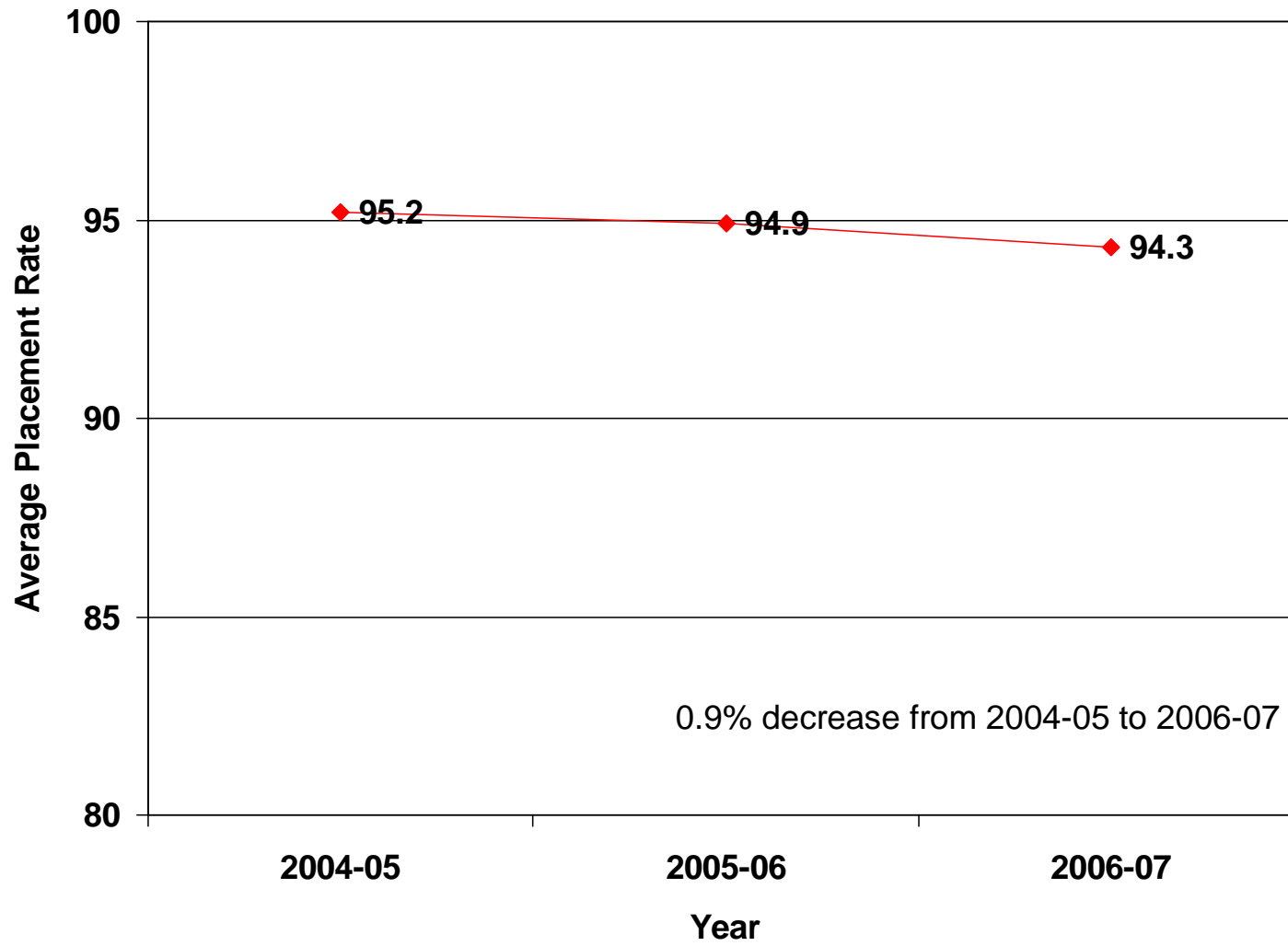
**Table 5c. Average Placement Rate for 2006-2007 Classes
Within Six Months of Graduation**

Practical Nursing Program	Average Placement Rate (%)
Appalachian Regional	92.9
Blount Memorial Hospital	100
Chattanooga State	91.0
Four Rivers Regional	100
Jackson Regional	93.5
South Central Regional	97.3
Tennessee Valley Regional	89.8
TTC at Athens	100
TTC at Crossville	97.0
TTC at Dickson	90.0
TTC at Elizabethton	100
TTC at Hartsville	96.6
TTC at Hohenwald	100
TTC at Knoxville	68.0
TTC at Livingston	93.2
TTC at Memphis	98.0
TTC at Morristown	100
TTC at Nashville	96.0
TTC at Paris	89.0
OVERALL AVERAGE	94.3
RANGE	68.0-100

Table 5d. Three Year Average Placement Rate Trend

Practical Nursing Program	Average Placement Rate (%)		
	2004-2005	2005-2006	2006-2007
Appalachian Regional	96.0	95.0	92.9
Blount Memorial Hospital	100	.	100
Chattanooga State	95.9	87.5	91.0
Four Rivers Regional	99.5	98.0	100
Jackson Regional	87.7	93.5	93.5
South Central Regional	95.7	100	97.3
Tennessee Valley Regional	91.7	86.7	89.8
TTC at Athens	100	100	100
TTC at Crossville	96.5	92.0	97.0
TTC at Dickson	96.3	97.0	90.0
TTC at Elizabethton	100	99.0	100
TTC at Hartsville	92.0	100	96.6
TTC at Hohenwald	100	100	100
TTC at Knoxville	100	99.5	68.0
TTC at Livingston	97.3	94.6	93.2
TTC at Memphis	88.0	98.0	98.0
TTC at Morristown	98.8	100	100
TTC at Nashville	88.8	85.0	96.0
TTC at Paris	84.1	82.7	89.0
OVERALL AVERAGE	95.2	94.9	94.3
Percent Change		(0.3%)	(0.6%)

Figure 5d. Average Placement Rate Trend Line



6. FACULTY SUMMARY

Table 6a. Faculty Status for Current Year

Practical Nursing Program	Total Faculty	Status	
		Full-time	Part-time
Appalachian Regional	14	10	4
Blount Memorial Hospital	5	2	3
Chattanooga State	9	5	4
Four Rivers Regional	30	8	22
Jackson Regional	14	8	6
South Central Regional	3	3	0
Tennessee Valley Regional	22	22	0
TTC at Athens	3	2	1
TTC at Crossville	9	3	6
TTC at Dickson	8	4	4
TTC at Elizabethton	15	9	6
TTC at Hartsville	5	2	3
TTC at Hohenwald	7	7	0
TTC at Knoxville	7	6	1
TTC at Livingston	7	6	1
TTC at Memphis	9	5	4
TTC at Morristown	7	7	0
TTC at Nashville	10	7	3
TTC at Paris	10	7	3
TOTAL	194	123	71
PERCENTAGE		63.4%	36.6%

Table 6b. Faculty Demographics for Full-time Faculty for Current Year

Practical Nursing Program	Total Faculty	Full-time Faculty	Gender		Race							
			Female	Male	AI/AN	Asian	Black	Hispanic	White	Other	NonUS	
Appalachian Regional	14	10	10	0	0	0	0	0	0	10	0	0
Blount Memorial Hospital	5	2	2	0	0	0	0	0	0	2	0	0
Chattanooga State	9	5	5	0	0	0	0	0	0	4	1	0
Four Rivers Regional	30	8	8	0	0	0	0	0	0	8	0	0
Jackson Regional	14	8	8	0	0	0	3	0	0	5	0	0
South Central Regional	3	3	3	0	0	0	0	0	0	3	0	0
Tennessee Valley Regional	22	22	22	0	0	0	1	0	0	21	0	0
TTC at Athens	3	2	2	0	0	0	0	0	0	2	0	0
TTC at Crossville	9	3	2	1	0	0	0	0	0	3	0	0
TTC at Dickson	8	4	4	0	0	0	0	0	0	4	0	0
TTC at Elizabethton	15	9	9	0	0	0	0	0	0	9	0	0
TTC at Hartsville	5	2	1	1	0	0	0	0	0	2	0	0
TTC at Hohenwald	7	7	6	1	0	0	0	0	0	7	0	0
TTC at Knoxville	7	6	6	0	0	0	0	0	0	6	0	0
TTC at Livingston	7	6	6	0	0	0	0	0	0	6	0	0
TTC at Memphis	9	5	4	1	0	0	4	0	0	1	0	0
TTC at Morristown	7	7	7	0	0	0	0	0	0	7	0	0
TTC at Nashville	10	7	7	0	0	0	0	0	0	7	0	0
TTC at Paris	10	7	7	0	0	0	1	0	0	6	0	0
TOTAL	194	123	119	4	0	0	9	0	0	113	1	0
PERCENTAGE^a			96.7%	3.3%	0.0%	0.0%	7.3%	0.0%	0.0%	91.9%	0.8%	0.0%

^aPercentage of Full-time Faculty

Table 6c. Faculty Demographics for Part-time Faculty for Current Year

Practical Nursing Program	Total Faculty	Part-time Faculty	Gender		Race							
			Female	Male	AI/AN	Asian	Black	Hispanic	White	Other	NonUS	
Appalachian Regional	14	4	4	0	0	0	0	0	0	4	0	0
Blount Memorial Hospital	5	3	3	0	0	0	0	0	0	3	0	0
Chattanooga State	9	4	4	0	0	0	0	0	0	4	0	0
Four Rivers Regional	30	22	22	0	0	0	2	0	0	20	0	0
Jackson Regional	14	6	6	0	0	0	1	0	0	5	0	0
South Central Regional	3	0	0	0	0	0	0	0	0	0	0	0
Tennessee Valley Regional	22	0	0	0	0	0	0	0	0	0	0	0
TTC at Athens	3	1	1	0	0	0	0	0	0	1	0	0
TTC at Crossville	9	6	5	1	0	0	0	0	0	6	0	0
TTC at Dickson	8	4	4	0	0	0	0	0	0	4	0	0
TTC at Elizabethton	15	6	6	0	0	0	0	0	0	6	0	0
TTC at Hartsville	5	3	1	2	0	0	0	0	0	3	0	0
TTC at Hohenwald	7	0	0	0	0	0	0	0	0	0	0	0
TTC at Knoxville	7	1	1	0	0	0	0	0	0	1	0	0
TTC at Livingston	7	1	1	0	0	0	0	0	0	1	0	0
TTC at Memphis	9	4	4	0	0	1	3	0	0	0	0	0
TTC at Morristown	7	0	0	0	0	0	0	0	0	0	0	0
TTC at Nashville	10	3	3	0	0	0	0	0	0	3	0	0
TTC at Paris	10	3	3	0	0	0	0	0	0	3	0	0
TOTAL	194	71	68	3	0	1	6	0	0	64	0	0
PERCENTAGE^a			95.8%	4.2%	0.0%	1.4%	8.5%	0.0%	0.0%	90.1%	0.0%	0.0%

^aPercentage of Part-time Faculty

Table 6d. Number of Budgeted, Unfilled Full-time Nursing Faculty Positions for Current Year

Practical Nursing Program	Budgeted, unfilled full-time nursing faculty positions
Appalachian Regional	1
Blount Memorial Hospital	0
Chattanooga State	0
Four Rivers Regional	0
Jackson Regional	0
South Central Regional	0
Tennessee Valley Regional	2
TTC at Athens	0
TTC at Crossville	0
TTC at Dickson	0
TTC at Elizabethton	0
TTC at Hartsville	1
TTC at Hohenwald	0
TTC at Knoxville	0
TTC at Livingston	0
TTC at Memphis	0
TTC at Morristown	0
TTC at Nashville	1
TTC at Paris	0
TOTAL	5