

**TENNESSEE BOARD OF NURSING  
STATE APPROVED PRACTICAL NURSING PROGRAMS  
ANNUAL REPORT 2009  
FEBRUARY 1, 2010**

**PREPARED BY:  
LOIS WAGNER, PHD, RN-BC  
JENNIFER MURRAY, PHD(C), BS**

**UNDER CONTRACT WITH  
THE TENNESSEE CENTER FOR NURSING**

**Table of Contents:**

Highlights..... 3

1. ENROLLMENT AND GRADUATION DATA

Table 1a. Number of Classes, Admissions, Enrollment, and Graduates ..... 4

Table 1b. Enrollment Demographics ..... 5

Table 1c. Number of Schools Reporting Significant Change (>10%) in Enrollment ..... 5

Table 1d. Graduate Demographics ..... 6

Table 1e. Four-Year Enrollment (as of October 31 of each year) and Graduation Trends..... 7

Figure 1e-1. Enrollment Trend Line..... 8

Figure 1e-2. Graduation Trend Line ..... 9

Table 1f. Data for Qualified Applicants Unable to be Admitted ..... 10

Table 1g. Factors Preventing Admission of More Students ..... 10

2. PROGRAM CHARACTERISTICS

Table 2a. Number of Schools that Offer Evening Classes, Weekend Classes, or Advanced Placement ..... 11

Table 2b. Number of Schools that Maintain an Articulation Agreement(s) ..... 12

3. CURRICULUM

Table 3a. Assessment/Proficiency Test for Graduating Students and Relationship with NCLEX Pass Rate ..... 13

4. RESOURCES

Table 4a. Average Faculty-Student Clinical Ratio..... 14

5. EVALUATION

Table 5a. Average Graduation Rate..... 15

Table 5b. Four-Year Average Graduation Rate Trend..... 16

Figure 5b. Average Graduation Rate Trend Line ..... 17

Table 5c. Average Placement Rate..... 18

Table 5d. Four-Year Average Placement Rate Trend..... 19

Figure 5d. Average Placement Rate Trend Line ..... 20

6. FACULTY SUMMARY

Table 6a. Faculty Status..... 21

Table 6b. Faculty Demographics for Full-time Faculty ..... 22

Table 6c. Faculty Demographics for Part-time Faculty ..... 23

Table 6d. Number of Budgeted, Unfilled Full-time Nursing Faculty Positions ..... 24

## Highlights

- The findings in this report are based on the 19 Tennessee Board of Nursing state approved Practical Nursing programs. The programs were surveyed in Fall 2009 and the report is based upon October 2009 data.

### Enrollment

- A total of 2119 students are enrolled in a total of 76 classes offered by the nineteen Practical Nursing programs; 12% are male and 12% are from racial and ethnic minorities.
- Seventeen of the 19 Practical Nursing programs reported having 2412 qualified applicants who were unable to be admitted.
- No program could have accepted more students.
- There was a 16.2% increase in enrollments from 2008.
- There was an increase of 45.6% in enrollments from 2005.

### Graduations

- A total of 1528 students graduated from the Tennessee Practical Nursing programs; 8.4% were male and 14% were from racial and ethnic minorities.
- There was a 6.0% increase in the number of graduates from 2007-2008.
- There was an increase of 32.9% in the number of graduates from 2004-2005.

### Program Characteristics

- Six programs (31.6%) offer evening classes.
- Three programs (15.8%) offer weekend classes.
- Seven programs (36.8%) offer advanced placement.
- Eleven programs (57.9%) maintain articulation agreement(s).

### Graduation and Placement Rates

- The average graduation rate from November 1, 2008 – October 31, 2009 for all 19 Practical Nursing programs is 72.7% with a range of 54.3-100%.
- The two-year trend shows a 3.4% increase in graduation rates.
- The five-year trend shows a 8.7% increase in graduation rates.
- The average placement rate for the 2008-2009 classes, within six months of graduation, is 86.2% with a range of 58-100%.
- The two-year trend shows a 2.7% decrease in placement rates.
- The five-year trend shows a 9.4% decrease in placement rates.

### Faculty Summary

- A total of 209 faculty members staff the nineteen Practical Nursing programs in Tennessee; 62.5% are full-time and 37.5% are part-time; 2.4% of all faculty members are male and 7.7% are from racial and ethnic minorities.
- There were two (2) reported budgeted, unfilled full-time nursing faculty positions for the current year of November 1, 2008 – October 31, 2009.
- The average faculty-student clinical ratio is 1:9.5.

## 1. ENROLLMENT AND GRADUATION DATA

**Table 1a. Number of Classes, Admissions, and Enrollment as of October 31, 2009;  
Number of Graduates November 1, 2008-October 31, 2009**

| <b>Practical Nursing Program</b> | <b>Number of Classes</b> | <b>Number of Admissions</b> | <b>Number Enrolled</b> | <b>Number of Graduates</b> |
|----------------------------------|--------------------------|-----------------------------|------------------------|----------------------------|
| Appalachian Regional             | 4                        | 138                         | 112                    | 65                         |
| Blount Memorial Hospital         | 2                        | 45                          | 45                     | 46                         |
| Chattanooga State                | 3                        | 109                         | 106                    | 83                         |
| Four Rivers Regional             | 7                        | 177                         | 142                    | 110                        |
| Jackson Regional                 | 7                        | 201                         | 169                    | 114                        |
| Plateau-Valley Regional*         | 3                        | 135                         | 110                    | 119                        |
| South Central Regional           | 4                        | 98                          | 85                     | 22                         |
| Tennessee Valley Regional        | 8                        | 248                         | 223                    | 148                        |
| TTC at Athens                    | 2                        | 64                          | 64                     | 32                         |
| TTC at Dickson                   | 4                        | 129                         | 112                    | 84                         |
| TTC at Elizabethton              | 4                        | 229                         | 175                    | 134                        |
| TTC at Hartsville                | 2                        | 62                          | 55                     | 49                         |
| TTC at Hohenwald                 | 4                        | 88                          | 83                     | 81                         |
| TTC at Knoxville                 | 4                        | 190                         | 153                    | 86                         |
| TTC at Livingston                | 3                        | 121                         | 111                    | 94                         |
| TTC at Memphis                   | 2                        | 87                          | 57                     | 53                         |
| TTC at Morristown                | 4                        | 105                         | 90                     | 61                         |
| TTC at Nashville                 | 4                        | 159                         | 125                    | 95                         |
| TTC at Paris                     | 5                        | 134                         | 102                    | 52                         |
| <b>TOTAL</b>                     | <b>76</b>                | <b>2519</b>                 | <b>2119</b>            | <b>1528</b>                |

\*Formerly TTC at Crossville & TTC at Harriman

**Table 1b. Enrollment Demographics as of October 31, 2009**

| Practical Nursing Program             | TE <sup>a</sup> | Gender         |                | Race               |           |            |           |             |          |                    |
|---------------------------------------|-----------------|----------------|----------------|--------------------|-----------|------------|-----------|-------------|----------|--------------------|
|                                       |                 | F <sup>b</sup> | M <sup>c</sup> | AI/AN <sup>d</sup> | Asian     | Black      | Hispanic  | White       | Other    | NonUS <sup>e</sup> |
| Appalachian Regional                  | 112             | 96             | 16             | 0                  | 1         | 2          | 1         | 108         | 0        | 0                  |
| Blount Memorial Hospital <sup>f</sup> | 45              | 37             | 8              | 0                  | 0         | 2          | 0         | 43          | 0        | 0                  |
| Chattanooga State                     | 106             | 100            | 6              | 0                  | 4         | 18         | 0         | 84          | 0        | 0                  |
| Four Rivers Regional                  | 142             | 131            | 11             | 3                  | 0         | 26         | 0         | 112         | 0        | 1                  |
| Jackson Regional <sup>f</sup>         | 169             | 145            | 24             | 0                  | 0         | 19         | 2         | 148         | 0        | 0                  |
| Plateau-Valley Regional               | 110             | 96             | 14             | 1                  | 1         | 3          | 1         | 104         | 0        | 0                  |
| South Central Regional                | 85              | 72             | 13             | 0                  | 0         | 9          | 0         | 75          | 1        | 0                  |
| Tennessee Valley Regional             | 223             | 199            | 24             | 0                  | 0         | 8          | 0         | 212         | 0        | 3                  |
| TTC at Athens <sup>f</sup>            | 64              | 57             | 7              | 0                  | 0         | 4          | 0         | 60          | 0        | 0                  |
| TTC at Dickson                        | 112             | 91             | 21             | 0                  | 1         | 8          | 5         | 98          | 0        | 0                  |
| TTC at Elizabethton                   | 175             | 156            | 19             | 1                  | 4         | 0          | 1         | 169         | 0        | 0                  |
| TTC at Hartsville                     | 55              | 49             | 6              | 0                  | 0         | 3          | 0         | 52          | 0        | 0                  |
| TTC at Hohenwald                      | 83              | 73             | 10             | 0                  | 1         | 4          | 0         | 78          | 0        | 0                  |
| TTC at Knoxville                      | 153             | 133            | 20             | 0                  | 0         | 24         | 0         | 129         | 0        | 0                  |
| TTC at Livingston <sup>f</sup>        | 111             | 96             | 15             | 0                  | 0         | 0          | 0         | 111         | 0        | 0                  |
| TTC at Memphis                        | 57              | 55             | 2              | 0                  | 1         | 48         | 0         | 8           | 0        | 0                  |
| TTC at Morristown                     | 90              | 79             | 11             | 0                  | 0         | 0          | 0         | 90          | 0        | 0                  |
| TTC at Nashville <sup>f</sup>         | 125             | 108            | 17             | 0                  | 2         | 32         | 2         | 89          | 0        | 0                  |
| TTC at Paris                          | 102             | 91             | 11             | 0                  | 0         | 8          | 0         | 94          | 0        | 0                  |
| <b>TOTAL</b>                          | <b>2119</b>     | <b>1864</b>    | <b>255</b>     | <b>5</b>           | <b>15</b> | <b>218</b> | <b>12</b> | <b>1864</b> | <b>1</b> | <b>4</b>           |
| <b>PERCENTAGE</b>                     |                 | 88.0%          | 12.0%          | 0.24%              | 0.71%     | 10.3%      | 0.57%     | 88.0%       | 0.05%    | 0.20%              |

<sup>a</sup>TE=Total Enrollment;

<sup>b</sup>F=Female; <sup>c</sup>M=Male;

<sup>d</sup>AI/AN=American Indian/Alaskan Native; <sup>e</sup>NonUS=Non US Resident

<sup>f</sup>As reported by respondent

**Table 1c. Number of Programs Reporting Budget Changes**

| Program                               | Number of Programs | Number Programs with Budget Changes |           |            |
|---------------------------------------|--------------------|-------------------------------------|-----------|------------|
|                                       |                    | Increase                            | Decrease  | Unchanged  |
| Budget Changes from 2008/09           | 19                 | 4 (21.1%)                           | 3 (15.8%) | 12 (63.2%) |
| Expecting Budget to Change in 2009/10 | 19                 | 2 (10.5%)                           | 6 (31.6%) | 11 (57.9%) |

**Table 1d. Graduate Demographics from November 1, 2008-October 31, 2009**

| Practical Nursing Program | Total Graduates | Gender      |            | Race     |          |            |           |             |          |          |
|---------------------------|-----------------|-------------|------------|----------|----------|------------|-----------|-------------|----------|----------|
|                           |                 | F           | M          | AI/AN    | Asian    | Black      | Hispanic  | White       | Other    | NonUS    |
| Appalachian Regional      | 65              | 55          | 10         | 0        | 0        | 0          | 0         | 65          | 0        | 0        |
| Blount Memorial Hospital  | 46              | 37          | 9          | 0        | 0        | 2          | 0         | 44          | 0        | 0        |
| Chattanooga State         | 83              | 75          | 8          | 0        | 2        | 17         | 2         | 62          | 0        | 0        |
| Four Rivers Regional      | 110             | 106         | 4          | 0        | 1        | 22         | 2         | 85          | 0        | 0        |
| Jackson Regional          | 114             | 109         | 5          | 0        | 0        | 25         | 0         | 89          | 0        | 0        |
| Plateau-Valley Regional   | 119             | 106         | 13         | 0        | 0        | 3          | 2         | 114         | 0        | 0        |
| South Central Regional    | 22              | 20          | 2          | 1        | 0        | 1          | 0         | 17          | 0        | 3        |
| Tennessee Valley Regional | 148             | 135         | 13         | 0        | 0        | 7          | 0         | 138         | 0        | 3        |
| TTC at Athens             | 32              | 30          | 2          | 0        | 0        | 1          | 0         | 31          | 0        | 0        |
| TTC at Dickson            | 84              | 81          | 3          | 1        | 0        | 6          | 1         | 76          | 0        | 0        |
| TTC at Elizabethton       | 134             | 122         | 12         | 0        | 0        | 5          | 0         | 126         | 0        | 0        |
| TTC at Hartsville         | 49              | 47          | 2          | 0        | 3        | 3          | 0         | 46          | 0        | 0        |
| TTC at Hohenwald          | 81              | 66          | 15         | 1        | 0        | 2          | 3         | 75          | 0        | 0        |
| TTC at Knoxville          | 86              | 78          | 8          | 0        | 0        | 16         | 4         | 66          | 0        | 0        |
| TTC at Livingston         | 94              | 86          | 8          | 0        | 0        | 1          | 0         | 91          | 2        | 0        |
| TTC at Memphis            | 53              | 52          | 1          | 0        | 0        | 47         | 0         | 6           | 0        | 0        |
| TTC at Morristown         | 61              | 58          | 3          | 0        | 0        | 2          | 0         | 59          | 0        | 0        |
| TTC at Nashville          | 95              | 85          | 10         | 0        | 0        | 20         | 0         | 75          | 0        | 0        |
| TTC at Paris              | 52              | 47          | 5          | 0        | 0        | 5          | 0         | 47          | 0        | 0        |
| <b>TOTAL</b>              | <b>1528</b>     | <b>1348</b> | <b>128</b> | <b>3</b> | <b>6</b> | <b>185</b> | <b>14</b> | <b>1312</b> | <b>2</b> | <b>6</b> |
| <b>PERCENTAGE</b>         |                 | 88.2%       | 8.4%       | 0.20%    | 0.40%    | 12.1%      | 0.92%     | 86.0%       | 0.13%    | 0.40%    |

**Table 1e. Five-Year Enrollment (as of October 31 of each year) and Graduation Trends**

| Practical Nursing Program | Enrollment  |              |             |             |              | Graduates   |             |              |             |             |
|---------------------------|-------------|--------------|-------------|-------------|--------------|-------------|-------------|--------------|-------------|-------------|
|                           | 2005        | 2006         | 2007        | 2008        | 2009         | 2004-2005   | 2005-2006   | 2006-2007    | 2007-2008   | 2008-2009   |
| Appalachian Regional      | 77          | 134          | 150         | 78          | 112          | 99          | 62          | 102          | 137         | 65          |
| Blount Memorial Hospital  | 41          | 44           | 38          | 47          | 45           | 36          | 39          | 43           | 36          | 46          |
| Chattanooga State         | 74          | 91           | 85          | 97          | 106          | 74          | 64          | 68           | 84          | 83          |
| Four Rivers Regional      | 79          | 99           | 118         | 147         | 142          | 78          | 53          | 86           | 116         | 110         |
| Jackson Regional          | 139         | 144          | 135         | 128         | 169          | 101         | 99          | 118          | 111         | 114         |
| Plateau-Valley Regional   |             |              |             | 152         | 110          |             |             |              |             | 119         |
| South Central Regional    | 27          | 66           | 25          | 23          | 85           | 22          | 23          | 61           | 24          | 22          |
| Tennessee Valley Regional | 130         | 186          | 171         | 178         | 223          | 143         | 123         | 167          | 149         | 148         |
| TTC at Athens             | 32          | 26           | 43          | 35          | 64           | 35          | 28          | 22           | 40          | 32          |
| TTC at Crossville*        | 40          | 49           | 68          |             |              | 18          | 37          | 29           | 50          |             |
| TTC at Dickson            | 74          | 77           | 72          | 88          | 112          | 55          | 64          | 69           | 63          | 84          |
| TTC at Elizabethton       | 185         | 172          | 144         | 155         | 175          | 114         | 106         | 156          | 117         | 134         |
| TTC at Hartsville         | 26          | 29           | 50          | 53          | 55           | 26          | 25          | 29           | 46          | 49          |
| TTC at Hohenwald          | 59          | 60           | 85          | 86          | 83           | 54          | 48          | 39           | 74          | 81          |
| TTC at Knoxville          | 35          | 54           | 83          | 104         | 153          | 27          | 26          | 56           | 76          | 86          |
| TTC at Livingston         | 93          | 100          | 113         | 110         | 111          | 69          | 85          | 85           | 58          | 94          |
| TTC at Memphis            | 61          | 74           | 78          | 59          | 57           | 8           | 57          | 69           | 68          | 53          |
| TTC at Morristown         | 81          | 70           | 71          | 73          | 90           | 56          | 68          | 56           | 59          | 61          |
| TTC at Nashville          | 107         | 93           | 91          | 112         | 125          | 84          | 84          | 56           | 61          | 95          |
| TTC at Paris              | 95          | 125          | 95          | 99          | 102          | 51          | 97          | 69           | 72          | 52          |
| <b>TOTAL</b>              | <b>1455</b> | <b>1693</b>  | <b>1715</b> | <b>1824</b> | <b>2119</b>  | <b>1150</b> | <b>1188</b> | <b>1380</b>  | <b>1441</b> | <b>1528</b> |
| <b>PERCENTAGE CHANGE</b>  |             | <b>16.4%</b> | <b>1.3%</b> | <b>6.4%</b> | <b>16.2%</b> |             | <b>3.3%</b> | <b>16.2%</b> | <b>4.4%</b> | <b>6.0%</b> |

\*Now Plateau Valley

**Figure 1e-1. Enrollment Trend Line**  
(Enrollment as of October 31 of each year)

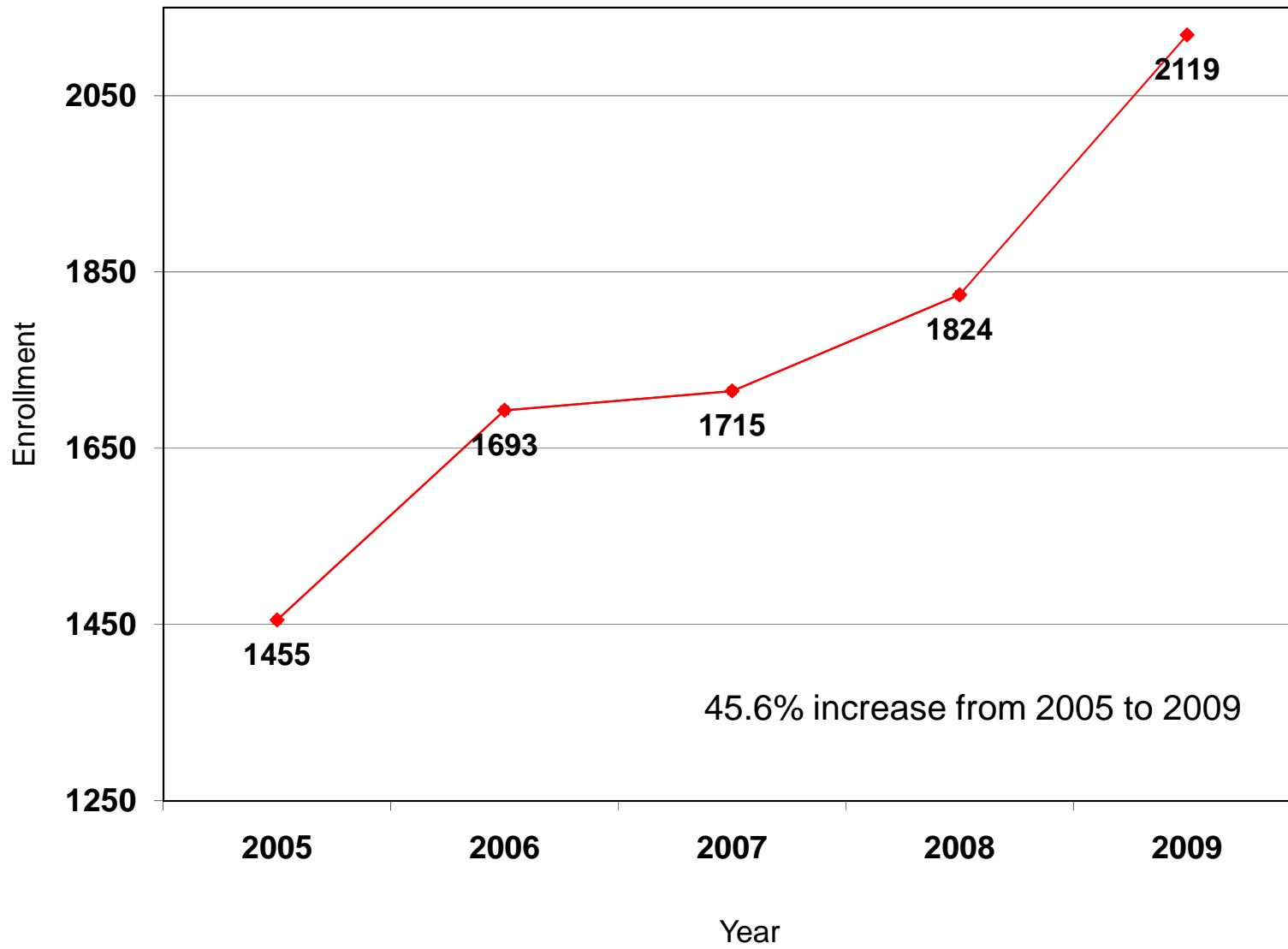
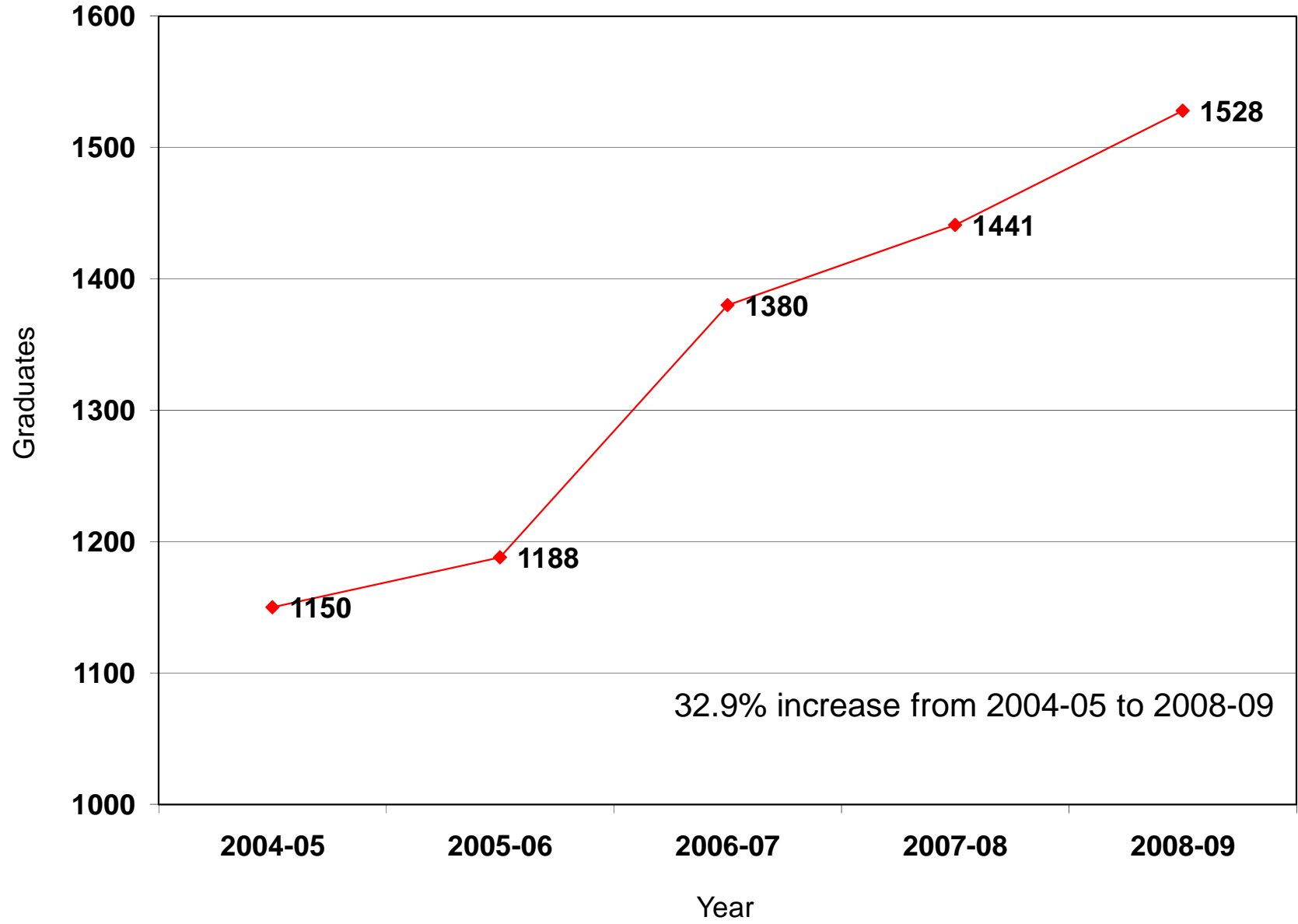


Figure 1e-2. Graduation Trend Line



**Table 1f. Data for Qualified Applicants Unable to be Admitted During November 1, 2008-October 31, 2009**

| <b>Practical Nursing Program</b> | <b>Did program have qualified applicants not admitted?</b> | <b>Number of qualified applicants unable to be admitted</b> | <b>Could program have accommodated more students?</b> |
|----------------------------------|--|---|---|
| Appalachian Regional             | ✓  | 38  | No  |
| Blount Memorial Hospital         | ✓  | 100   | No  |
| Chattanooga State                | ✓  | 105   | No  |
| Four Rivers Regional             | ✓  | 80  | No  |
| Jackson Regional                 | ✓  | 200   | No  |
| Plateau-Valley Regional          | ✓  | 7   | No  |
| South Central Regional           | ✓  | 50  | No  |
| Tennessee Valley Regional        | ✓  | 260   | No  |
| TTC at Athens                    | ✓  | 10  | No  |
| TTC at Dickson                   | ✓  | 187   | No  |
| TTC at Elizabethton              |  | N/A   | No  |
| TTC at Hartsville <sup>a</sup>   | ✓  | .   | No  |
| TTC at Hohenwald                 | ✓  | 52  | No  |
| TTC at Knoxville                 | ✓  | 200   | No  |
| TTC at Livingston                | ✓  | 59  | No  |
| TTC at Memphis                   | ✓  | 200   | No  |
| TTC at Morristown                | ✓  | 89  | No  |
| TTC at Nashville                 |  | N/A   | .   |
| TTC at Paris                     | ✓  | 100   | No  |
| <b>TOTAL</b>                     | <b>17 of 19 Schools</b>                                    | <b>2412</b>   | <b>0 of 19 Schools</b>                                |

<sup>a</sup>Number not reported by respondent

**Table 1g. Factors Preventing Admission of More Students during 2008-2009 Year**

| <b>Main factors preventing admission of more students</b> | <b>Number of schools Rank 1<sup>a</sup> n (%)</b> | <b>Number of schools Rank 2<sup>a</sup> n (%)</b> | <b>Number of schools Rank 3<sup>a</sup> n (%)</b> |
|---|---|---|---|
| Educational Facilities                                    | 4 (23.5%)   | 3 (17.7%)   | 5 (29.4%)   |
| Program Budget  | 4 (23.5%)   | 4 (23.5%)   | 4 (23.5%)   |
| Clinical Resources  | 7 (41.2%)   | 6 (35.3%)   | 1 (5.9%)  |
| Faculty Resources   | 2 (11.8%)   | 4 (23.5%)   | 6 (35.3%)   |
| Other: Board Approval                                     | -   | -   | 1 (5.9%)  |

<sup>a</sup>Respondents were asked to rank as 1 being the most important; Two Programs did not respond.

## 2. PROGRAM CHARACTERISTICS

**Table 2a. Number of Schools that Offer Evening Classes, Weekend Classes, or Advanced Placement**

| <b>Practical Nursing Program</b> | <b>Evening classes</b> | <b>Weekend classes</b> | <b>Advanced placement</b> |
|----------------------------------|------------------------|------------------------|---------------------------|
| Appalachian Regional             |                        |                        | ✓                         |
| Blount Memorial Hospital         |                        |                        |                           |
| Chattanooga State                | ✓                      |                        | ✓                         |
| Four Rivers Regional             | ✓                      | ✓                      | ✓                         |
| Jackson Regional                 |                        |                        |                           |
| Plateau-Valley Regional          | ✓                      |                        |                           |
| South Central Regional           |                        |                        | ✓                         |
| Tennessee Valley Regional        | ✓                      |                        |                           |
| TTC at Athens                    |                        |                        |                           |
| TTC at Dickson                   |                        |                        |                           |
| TTC at Elizabethton              |                        |                        | ✓                         |
| TTC at Hartsville                |                        |                        |                           |
| TTC at Hohenwald                 |                        |                        |                           |
| TTC at Knoxville                 |                        |                        |                           |
| TTC at Livingston                |                        |                        |                           |
| TTC at Memphis                   |                        |                        |                           |
| TTC at Morristown                |                        |                        | ✓                         |
| TTC at Nashville                 | ✓                      | ✓                      | ✓                         |
| TTC at Paris                     | ✓                      | ✓                      | ✓                         |
| <b>TOTAL</b>                     | <b>6 of 19 Schools</b> | <b>3 of 19 Schools</b> | <b>7 of 19 Schools</b>    |

**Table 2b. Number of Schools that Maintain an Articulation Agreement(s)  
with an Associate Degree or Baccalaureate Degree Program**

| <b>Practical Nursing Program</b> | <b>Maintain Articulation Agreement(s)</b> |
|----------------------------------|---|
| Appalachian Regional             |   |
| Blount Memorial Hospital         |   |
| Chattanooga State                | ✓   |
| Four Rivers Regional             | ✓   |
| Jackson Regional                 |   |
| Plateau-Valley Regional          |   |
| South Central Regional           | ✓   |
| Tennessee Valley Regional        |   |
| TTC at Athens                    | ✓   |
| TTC at Dickson                   |   |
| TTC at Elizabethton              | ✓   |
| TTC at Hartsville                |   |
| TTC at Hohenwald                 | ✓   |
| TTC at Knoxville                 | ✓   |
| TTC at Livingston                | ✓   |
| TTC at Memphis                   | ✓   |
| TTC at Morristown                | ✓   |
| TTC at Nashville                 |   |
| TTC at Paris                     | ✓   |
| <b>TOTAL</b>                     | <b>11 of 19 Schools</b>                   |

### 3. CURRICULUM

**Table 3a. Assessment/Proficiency Test for Graduating Students and Relationship with NCLEX Pass Rate**

| <b>Practical Nursing Program</b> | <b>Test Required?</b>   | <b>Name of test?</b>                                     | <b>Relationship with NCLEX pass rate?</b>          |
|----------------------------------|-------------------------|--|--|
| Appalachian Regional             | ✓                       | ATI  | Yes  |
| Blount Memorial Hospital         | ✓                       | Arnett Development                                       | Yes  |
| Chattanooga State                | ✓                       | NLN  | Yes  |
| Four Rivers Regional             | ✓                       | .  | Yes  |
| Jackson Regional                 | ✓                       | ATI  | Yes  |
| Plateau-Valley Regional          | ✓                       | ATI  | Yes  |
| South Central Regional           | ✓                       | NLN  | Yes  |
| Tennessee Valley Regional        | ✓                       | Contemporary Learning, HESI, NLN                         | Yes  |
| TTC at Athens                    | ✓                       | HESI and ATI   | Yes  |
| TTC at Dickson                   | ✓                       | PN-CAT   | No   |
| TTC at Elizabethton              | ✓                       | ATI  | Yes  |
| TTC at Hartsville                | ✓                       | Pearson Exam   | Yes  |
| TTC at Hohenwald                 | ✓                       | ATI, PN Comprehensive                                    | Yes  |
| TTC at Knoxville                 | ✓                       | ATI  | Yes  |
| TTC at Livingston                | ✓                       | ATI  | Yes  |
| TTC at Memphis                   | ✓                       | NLN  | Yes  |
| TTC at Morristown                | ✓                       | Contemporary Health System                               | Yes  |
| TTC at Nashville                 | ✓                       | ERI, Contemporary Health System-<br>Mock PN Testing, ATI | Yes  |
| TTC at Paris                     | ✓                       | HESI,PN Exit Exam  | Yes  |
| <b>Total</b>                     | <b>19 of 19 Schools</b> |  | <b>Yes for 18 of 19 Schools<br/>Requiring Test</b> |

#### 4. RESOURCES

**Table 4a. Average Faculty-Student Clinical Ratio for 2009 (N=14 schools reporting)**

| <b>Average Ratio</b> | <b>Ratio Range</b> |
|----------------------|--------------------|
| 1:9.5                | 1:8 – 1:12         |

## 5. EVALUATION

**Table 5a. Average Graduation Rate from  
November 1, 2008-October 31, 2009**

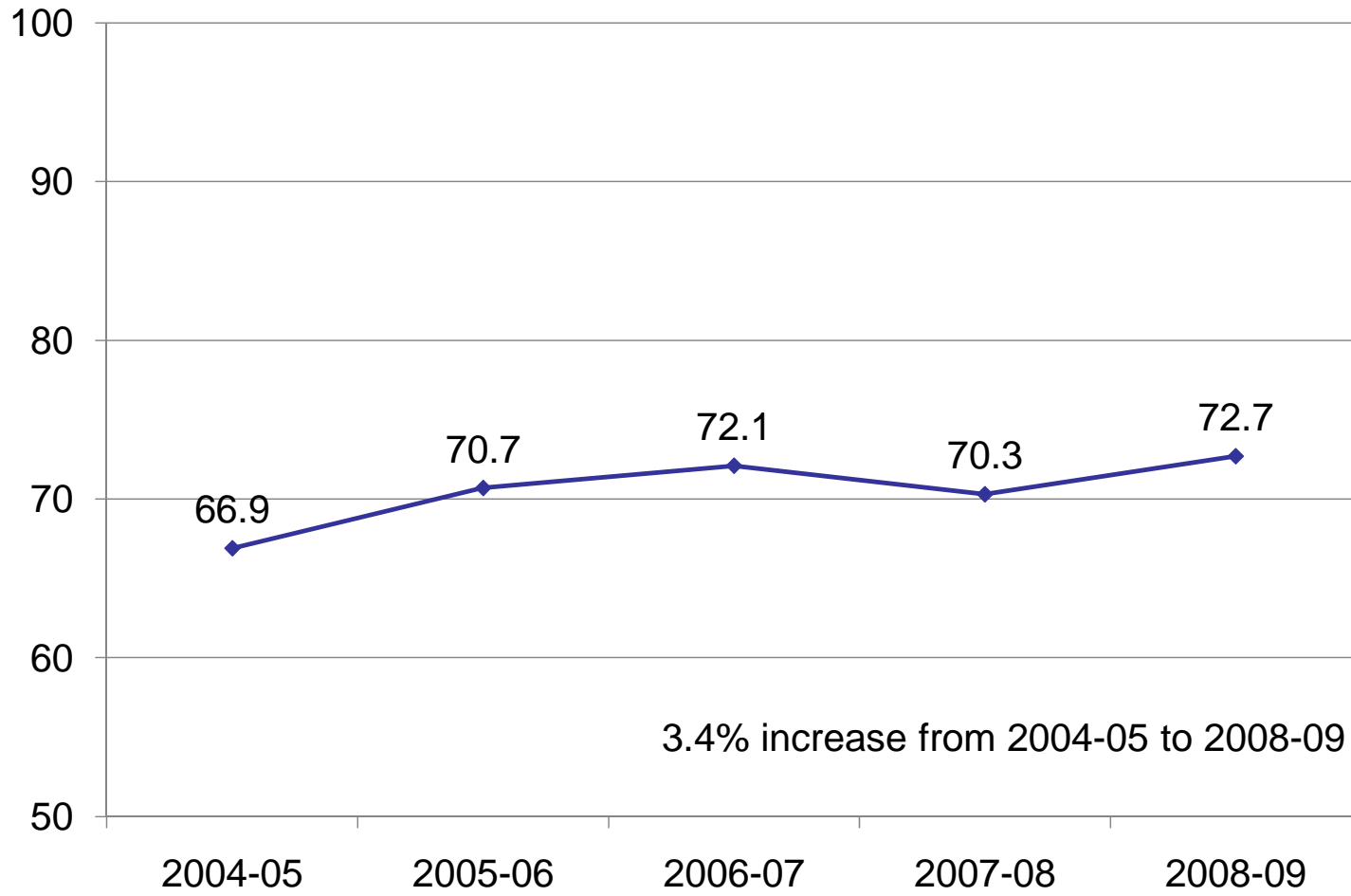
| <b>Practical Nursing Program</b> | <b>Average Graduation Rate (%)</b> |
|----------------------------------|------------------------------------|
| Appalachian Regional             | 58.9                               |
| Blount Memorial Hospital         | 100                                |
| Chattanooga State                | 80.7                               |
| Four Rivers Regional             | 66.6                               |
| Jackson Regional                 | 64.1                               |
| Plateau-Valley Regional          | 54.3                               |
| South Central Regional           | 86.5                               |
| Tennessee Valley Regional        | 76.3                               |
| TTC at Athens                    | 96.0                               |
| TTC at Dickson                   | 74.4                               |
| TTC at Elizabethton              | 63.5                               |
| TTC at Hartsville                | 81.5                               |
| TTC at Hohenwald                 | 99.0                               |
| TTC at Knoxville                 | 58.0                               |
| TTC at Livingston                | 75.7                               |
| TTC at Memphis                   | 55.0                               |
| TTC at Morristown                | 65.2                               |
| TTC at Nashville                 | 54.3                               |
| TTC at Paris                     | 71.0                               |
| <b>OVERALL AVERAGE</b>           | <b>72.7</b>                        |
| <b>RANGE</b>                     | <b>54.3-100</b>                    |

**Table 5b. Five-Year Average Graduation Rate Trend**

| Practical Nursing Program | Average Graduation Rate (%) |             |             |               |             |
|---------------------------|-----------------------------|-------------|-------------|---------------|-------------|
|                           | 2004-2005                   | 2005-2006   | 2006-2007   | 2007-2008     | 2008-2009   |
| Appalachian Regional      | 62.7                        | 69.5        | 55.0        | 61.0          | 58.9        |
| Blount Memorial Hospital  | 100                         | 100         | 100         | 95.0          | 100         |
| Chattanooga State         | 70.7                        | 74.5        | 80.0        | 84.7          | 80.7        |
| Four Rivers Regional      | 54.3                        | 61.0        | 66.8        | 71.0          | 66.6        |
| Jackson Regional          | 61.5                        | 57.7        | 65.2        | 62.8          | 64.1        |
| Plateau-Valley Regional   |                             |             |             | 64.5          | 54.3        |
| South Central Regional    | 84.5                        | 71.9        | 88.3        | 86.2          | 86.5        |
| Tennessee Valley Regional | 70.8                        | 73.8        | 78.4        | 74.9          | 76.3        |
| TTC at Athens             | 86.1                        | 88.0        | 81.0        | 96.0          | 96.0        |
| TTC at Crossville         | 61.0                        | 74.0        | 57.0        | 50.0          |             |
| TTC at Dickson            | 72.7                        | 68.7        | 78.3        | 70.3          | 74.4        |
| TTC at Elizabethton       | 52.3                        | 58.0        | 71.8        | 53.0          | 63.5        |
| TTC at Hartsville         | 86.0                        | 83.0        | 96.6        | 76.5          | 81.5        |
| TTC at Hohenwald          | 95.0                        | 80.6        | 88.0        | 83.8          | 99.0        |
| TTC at Knoxville          | 50.0                        | 50.0        | 48.5        | 59.0          | 58.0        |
| TTC at Livingston         | 62.0                        | 76.3        | 71.3        | 82.4          | 75.7        |
| TTC at Memphis            | 30.0                        | 63.3        | 71.5        | 68.0          | 55.0        |
| TTC at Morristown         | 55.8                        | 70.8        | 60.8        | 59.7          | 65.2        |
| TTC at Nashville          | 48.5                        | 55.2        | 42.8        | 47.0          | 54.3        |
| TTC at Paris              | 67.8                        | 66.5        | 68.4        | 61.1          | 71.0        |
| <b>OVERALL AVERAGE</b>    | <b>66.9</b>                 | <b>70.7</b> | <b>72.1</b> | <b>70.3</b>   | <b>72.7</b> |
| <b>Percent Change</b>     |                             | <b>5.7%</b> | <b>2.0%</b> | <b>(2.5%)</b> | <b>3.4%</b> |

( )=negative value

Figure 5b. Average Graduation Rate Trend Line



**Table 5c. Average Placement Rate for 2008-2009 Classes  
Within Six Months of Graduation**

| <b>Practical Nursing Program</b> | <b>Average Placement Rate (%)</b> |
|----------------------------------|-----------------------------------|
| Appalachian Regional             | 87.3                              |
| Blount Memorial Hospital         | .                                 |
| Chattanooga State                | 74.0                              |
| Four Rivers Regional             | 81.6                              |
| Jackson Regional                 | 96.8                              |
| Plateau-Valley Regional          | 65.0                              |
| South Central Regional           | 90.0                              |
| Tennessee Valley Regional        | 85.3                              |
| TTC at Athens                    | 99.5                              |
| TTC at Dickson                   | 86.1                              |
| TTC at Elizabethton              | 100                               |
| TTC at Hartsville                | 98.0                              |
| TTC at Hohenwald                 | 100.0                             |
| TTC at Knoxville                 | 58.0                              |
| TTC at Livingston                | 84.8                              |
| TTC at Memphis                   | 91.5                              |
| TTC at Morristown                | 100.0                             |
| TTC at Nashville                 | 89.3                              |
| TTC at Paris                     | 64.9                              |
| <b>OVERALL AVERAGE</b>           | <b>86.2</b>                       |
| <b>RANGE</b>                     | <b>58-100</b>                     |

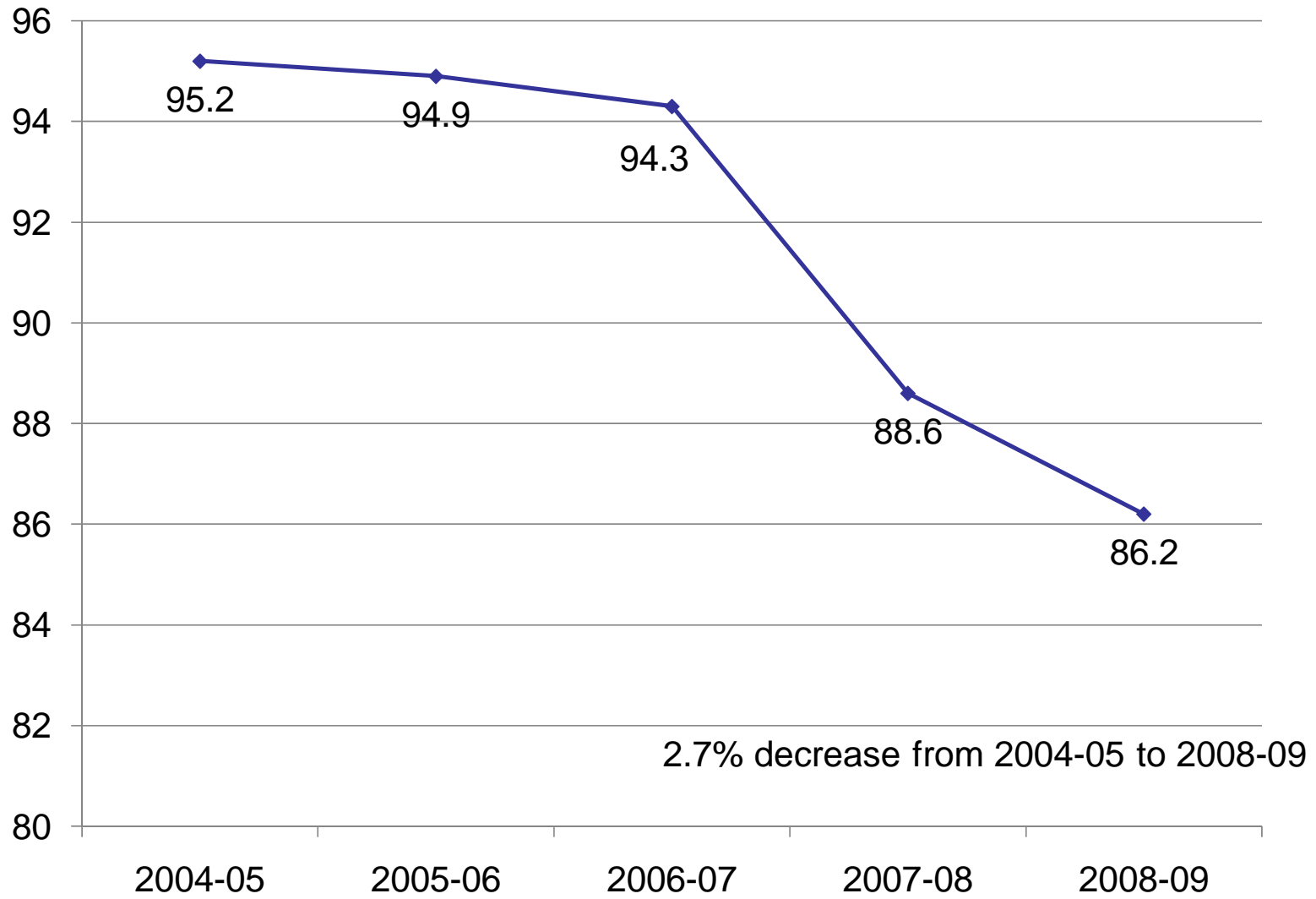
**Table 5d. Five-Year Average Placement Rate Trend**

| Practical Nursing Program | Average Placement Rate (%) |               |               |              |              |
|---------------------------|----------------------------|---------------|---------------|--------------|--------------|
|                           | 2004-2005                  | 2005-2006     | 2006-2007     | 2007-2008    | 2008-2009    |
| Appalachian Regional      | 96.0                       | 95.0          | 92.9          | 89.0         | 87.3         |
| Blount Memorial Hospital  | 100                        | .             | 100           | .            | .            |
| Chattanooga State         | 95.9                       | 87.5          | 91.0          | 89.0         | 74.0         |
| Four Rivers Regional      | 99.5                       | 98.0          | 100           | 93.9         | 81.6         |
| Jackson Regional          | 87.7                       | 93.5          | 93.5          | 92.8         | 96.8         |
| Plateau-Valley Regional   |                            |               |               | 81.5         | 65.0         |
| South Central Regional    | 95.7                       | 100           | 97.3          | 91.7         | 90.0         |
| Tennessee Valley Regional | 91.7                       | 86.7          | 89.8          | 91.4         | 85.3         |
| TTC at Athens             | 100                        | 100           | 100           | 100.0        | 99.5         |
| TTC at Crossville*        | 96.5                       | 92.0          | 97.0          | 76.0         | .            |
| TTC at Dickson            | 96.3                       | 97.0          | 90.0          | 98.7         | 86.1         |
| TTC at Elizabethton       | 100                        | 99.0          | 100           | 100.0        | 100.0        |
| TTC at Hartsville         | 92.0                       | 100           | 96.6          | 100.0        | 98.0         |
| TTC at Hohenwald          | 100                        | 100           | 100           | 100.0        | 100.0        |
| TTC at Knoxville          | 100                        | 99.5          | 68.0          | 65.0         | 58.0         |
| TTC at Livingston         | 97.3                       | 94.6          | 93.2          | 82.6         | 84.8         |
| TTC at Memphis            | 88.0                       | 98.0          | 98.0          | 83.0         | 91.5         |
| TTC at Morristown         | 98.8                       | 100           | 100           | 100.0        | 100.0        |
| TTC at Nashville          | 88.8                       | 85.0          | 96.0          | 79.0         | 89.3         |
| TTC at Paris              | 84.1                       | 82.7          | 89.0          | 70.2         | 64.9         |
| <b>OVERALL AVERAGE</b>    | <b>95.2</b>                | <b>94.9</b>   | <b>94.3</b>   | <b>88.6</b>  | <b>86.2</b>  |
| <b>Percent Change</b>     |                            | <b>(0.3%)</b> | <b>(0.6%)</b> | <b>(6.0)</b> | <b>(2.7)</b> |

( )=negative value

\*Closed Program. Now Plateau Valley Regional

Figure 5d. Average Placement Rate Trend Line



## 6. FACULTY SUMMARY

Table 6a. Faculty Status for 2009

| Practical Nursing Program | Total Faculty | Status     |           |            | Total RN Faculty | By Highest Degree In Nursing |           |          |          |          | By Highest Degree (Not in Nursing) |          |  |
|---------------------------|---------------|------------|-----------|------------|------------------|------------------------------|-----------|----------|----------|----------|------------------------------------|----------|--|
|                           |               | Full-time  | Part-time | Diploma    |                  | AD                           | BSN       | MSN      | Doc.     | Bacc.    | Mast.                              | Doct.    |  |
|                           |               |            |           |            |                  |                              |           |          |          |          |                                    |          |  |
| Appalachian Regional      | 10            | 6          | 4         | 10         | 1                | 5                            | 4         | 0        | 0        | 0        | 0                                  | 0        |  |
| Blount Memorial Hospital  | 5             | 2          | 3         | 5          | 0                | 3                            | 2         | 0        | 0        | 1        | 0                                  | 0        |  |
| Chattanooga State         | 12            | 6          | 6         | 12         | 1                | 6                            | 5         | 0        | 0        | 2        | 2                                  | 0        |  |
| Four Rivers Regional      | 26            | 8          | 18        | 26         | 2                | 12                           | 7         | 0        | 1        | 0        | 0                                  | 0        |  |
| Jackson Regional          | 15            | 9          | 6         | 15         | 1                | 7                            | 6         | 1        | 0        | 0        | 0                                  | 0        |  |
| Plateau-Valley Regional   | 12            | 6          | 6         | 12         | 2                | 4                            | 6         | 0        | 0        | 0        | 1                                  | 0        |  |
| South Central Regional    | 9             | 5          | 4         | 9          | 0                | 6                            | 3         | 0        | 0        | 0        | 0                                  | 0        |  |
| Tennessee Valley Regional | 20            | 19         | 1         | 20         | 1                | 8                            | 8         | 2        | 0        | 0        | 1                                  | 0        |  |
| TTC at Athens             | 5             | 2          | 3         | 5          | 0                | 2                            | 4         | 0        | 0        | 0        | 0                                  | 0        |  |
| TTC at Dickson            | 11            | 6          | 5         | 11         | 0                | 7                            | 3         | 1        | 0        | 1        | 0                                  | 0        |  |
| TTC at Elizabethton       | 12            | 9          | 3         | 12         | 1                | 4                            | 6         | 0        | 0        | 0        | 2                                  | 0        |  |
| TTC at Hartsville         | 5             | 4          | 2         | 5          | 0                | 2                            | 3         | 0        | 0        | 1        | 1                                  | 0        |  |
| TTC at Hohenwald          | 7             | 7          | 0         | 7          | 0                | 5                            | 2         | 0        | 0        | 0        | 1                                  | 0        |  |
| TTC at Knoxville          | 17            | 9          | 8         | 17         | 2                | 5                            | 9         | 1        | 0        | 1        | 0                                  | 0        |  |
| TTC at Livingston         | 6             | 6          | 0         | 6          | 0                | 2                            | 4         | 0        | 0        | 0        | 2                                  | 0        |  |
| TTC at Memphis            | 7             | 4          | 2         | 7          | 0                | 1                            | 5         | 1        | 0        | 0        | 1                                  | 0        |  |
| TTC at Morristown         | 9             | 8          | 1         | 9          | 0                | 5                            | 4         | 0        | 0        | 1        | 0                                  | 0        |  |
| TTC at Nashville          | 10            | 8          | 2         | 10         | 0                | 4                            | 4         | 2        | 0        | 0        | 0                                  | 0        |  |
| TTC at Paris              | 11            | 7          | 4         | 11         | 2                | 4                            | 4         | 1        | 0        | 0        | 0                                  | 0        |  |
| <b>TOTAL</b>              | <b>209</b>    | <b>131</b> | <b>78</b> | <b>209</b> | <b>13</b>        | <b>92</b>                    | <b>89</b> | <b>9</b> | <b>1</b> | <b>7</b> | <b>11</b>                          | <b>0</b> |  |
| <b>PERCENTAGE</b>         |               | 62.7       | 37.3      |            | 6.2              | 44.0                         | 42.6      | 4.3      | .05      | 3.3      | 5.3                                | 0        |  |

**Table 6b. Faculty Demographics for Full-time Faculty for 2009<sup>b</sup>**

| Practical Nursing Program              | Total Faculty | Full-time Faculty | Gender     |          | Race     |          |          |          |          |            |          |          |
|--|---------------|-------------------|------------|----------|----------|----------|----------|----------|----------|------------|----------|----------|
|  |               |                   | Female     | Male     | AI/AN    | Asian    | Black    | Hispanic | White    | Other      | NonUS    |          |
| Appalachian Regional                   | 10            | 6                 | 6          | 0        | 0        | 0        | 0        | 0        | 0        | 6          | 0        | 0        |
| Blount Memorial Hospital               | 5             | 2                 | 2          | 0        | 0        | 0        | 0        | 0        | 0        | 2          | 0        | 0        |
| Chattanooga State                      | 12            | 6                 | 6          | 0        | 0        | 0        | 0        | 0        | 0        | 5          | 1        | 0        |
| Four Rivers Regional                   | 26            | 8                 | 8          | 0        | 0        | 0        | 0        | 0        | 0        | 8          | 0        | 0        |
| Jackson Regional                       | 15            | 9                 | 9          | 0        | 0        | 0        | 0        | 2        | 0        | 7          | 0        | 0        |
| Plateau-Valley Regional                | 12            | 6                 | 5          | 1        | 0        | 0        | 0        | 0        | 0        | 6          | 0        | 0        |
| South Central Regional                 | 9             | 5                 | 5          | 0        | 0        | 0        | 0        | 0        | 0        | 5          | 0        | 0        |
| Tennessee Valley Regional <sup>b</sup> | 20            | 19                | 19         | 0        | 0        | 0        | 0        | 0        | 0        | 19         | 0        | 0        |
| TTC at Athens                          | 5             | 2                 | 2          | 0        | 0        | 0        | 0        | 0        | 0        | 2          | 0        | 0        |
| TTC at Dickson                         | 11            | 6                 | 6          | 0        | 0        | 0        | 0        | 0        | 0        | 6          | 0        | 0        |
| TTC at Elizabethton                    | 12            | 9                 | 9          | 0        | 0        | 0        | 0        | 0        | 0        | 9          | 0        | 0        |
| TTC at Hartsville <sup>b</sup>         | 5             | 3                 | 2          | 1        | 0        | 0        | 0        | 0        | 0        | 4          | 0        | 0        |
| TTC at Hohenwald                       | 7             | 7                 | 7          | 0        | 0        | 0        | 0        | 0        | 0        | 7          | 0        | 0        |
| TTC at Knoxville                       | 17            | 9                 | 9          | 0        | 0        | 0        | 0        | 0        | 0        | 9          | 0        | 0        |
| TTC at Livingston                      | 6             | 6                 | 6          | 0        | 0        | 0        | 0        | 0        | 0        | 6          | 0        | 0        |
| TTC at Memphis                         | 6             | 4                 | 4          | 0        | 0        | 0        | 0        | 4        | 0        | 0          | 0        | 0        |
| TTC at Morristown                      | 9             | 8                 | 8          | 0        | 0        | 0        | 0        | 0        | 0        | 8          | 0        | 0        |
| TTC at Nashville                       | 10            | 8                 | 7          | 1        | 0        | 0        | 1        | 0        | 0        | 7          | 0        | 0        |
| TTC at Paris                           | 11            | 7                 | 7          | 0        | 0        | 0        | 1        | 0        | 0        | 6          | 0        | 0        |
| <b>TOTAL</b>                           | <b>208</b>    | <b>130</b>        | <b>127</b> | <b>3</b> | <b>0</b> | <b>0</b> | <b>8</b> | <b>0</b> | <b>0</b> | <b>122</b> | <b>0</b> | <b>0</b> |
| <b>PERCENTAGE<sup>a</sup></b>          |               |                   | 97.7       | 2.3      | 0.0      | 0.0      | 6.2      | 0.0      | 0.0      | 93.8       | 0.0      | 0.0      |

<sup>a</sup>Percentage of Full-time Faculty

<sup>b</sup>As reported by survey respondent

**Table 6c. Faculty Demographics for Part-time Faculty for 2009<sup>b</sup>**

| Practical Nursing Program              | Total Faculty | Part-time Faculty | Gender    |          | Race     |          |          |          |          |           |          |          |
|--|---------------|-------------------|-----------|----------|----------|----------|----------|----------|----------|-----------|----------|----------|
|  |               |                   | Female    | Male     | AI/AN    | Asian    | Black    | Hispanic | White    | Other     | NonUS    |          |
| Appalachian Regional                   | 10            | 4                 | 4         | 0        | 0        | 0        | 0        | 0        | 0        | 4         | 0        | 0        |
| Blount Memorial Hospital               | 5             | 3                 | 3         | 0        | 0        | 0        | 0        | 0        | 0        | 3         | 0        | 0        |
| Chattanooga State                      | 12            | 6                 | 5         | 1        | 0        | 0        | 0        | 0        | 0        | 6         | 0        | 0        |
| Four Rivers Regional                   | 26            | 18                | 18        | 0        | 0        | 0        | 2        | 0        | 0        | 16        | 0        | 0        |
| Jackson Regional                       | 15            | 6                 | 6         | 0        | 0        | 0        | 0        | 0        | 0        | 6         | 0        | 0        |
| Plateau-Valley Regional                | 12            | 6                 | 6         | 0        | 0        | 0        | 0        | 0        | 0        | 6         | 0        | 0        |
| South Central Regional                 | 9             | 4                 | 4         | 0        | 0        | 0        | 1        | 0        | 0        | 3         | 0        | 0        |
| Tennessee Valley Regional <sup>b</sup> | 20            | 1                 | 1         | 0        | 0        | 0        | 1        | 0        | 0        | 0         | 0        | 0        |
| TTC at Athens                          | 5             | 3                 | 3         | 0        | 0        | 0        | 0        | 0        | 0        | 3         | 0        | 0        |
| TTC at Dickson                         | 11            | 5                 | 5         | 0        | 0        | 0        | 0        | 0        | 0        | 5         | 0        | 0        |
| TTC at Elizabethton                    | 12            | 3                 | 3         | 0        | 0        | 0        | 0        | 0        | 0        | 3         | 0        | 0        |
| TTC at Hartsville                      | 5             | 2                 | 1         | 1        | 0        | 0        | 0        | 0        | 0        | 2         | 0        | 0        |
| TTC at Hohenwald                       | 7             | 0                 | 0         | 0        | 0        | 0        | 0        | 0        | 0        | 0         | 0        | 0        |
| TTC at Knoxville                       | 17            | 8                 | 8         | 0        | 0        | 0        | 2        | 0        | 0        | 6         | 0        | 0        |
| TTC at Livingston                      | 6             | 0                 | 0         | 0        | 0        | 0        | 0        | 0        | 0        | 0         | 0        | 0        |
| TTC at Memphis                         | 6             | 2                 | 2         | 0        | 0        | 1        | 1        | 0        | 0        | 0         | 0        | 0        |
| TTC at Morristown                      | 9             | 1                 | 1         | 0        | 0        | 0        | 0        | 0        | 0        | 1         | 0        | 0        |
| TTC at Nashville                       | 10            | 2                 | 2         | 0        | 0        | 0        | 0        | 0        | 0        | 2         | 0        | 0        |
| TTC at Paris                           | 11            | 4                 | 4         | 0        | 0        | 0        | 0        | 0        | 0        | 4         | 0        | 0        |
| <b>TOTAL</b>                           | <b>208</b>    | <b>78</b>         | <b>76</b> | <b>2</b> | <b>0</b> | <b>1</b> | <b>7</b> | <b>0</b> | <b>0</b> | <b>70</b> | <b>0</b> | <b>0</b> |
| <b>PERCENTAGE<sup>a</sup></b>          |               |                   | 97.4      | 2.6      | 0.0      | 1.3      | 9.0      | 0.0      | 0.0      | 89.7      | 0.0      | 0.0      |

<sup>a</sup>Percentage of Part-time Faculty

<sup>b</sup>As reported by survey respondent

**Table 6d. Number of Budgeted, Unfilled Full-time Nursing Faculty Positions for 2009**

| <b>Practical Nursing Program</b> | <b>Budgeted, unfilled full-time nursing faculty positions</b> |
|----------------------------------|---|
| Appalachian Regional             | 1   |
| Blount Memorial Hospital         | 0   |
| Chattanooga State                | 0   |
| Four Rivers Regional             | 0   |
| Jackson Regional                 | 0   |
| Plateau-Valley Regional          | 0   |
| South Central Regional           | 0   |
| Tennessee Valley Regional        | 0   |
| TTC at Athens                    | 0   |
| TTC at Dickson                   | 0   |
| TTC at Elizabethton              | 0   |
| TTC at Hartsville                | 0   |
| TTC at Hohenwald                 | 0   |
| TTC at Knoxville                 | 0   |
| TTC at Livingston                | 0   |
| TTC at Memphis                   | 0   |
| TTC at Morristown                | 0   |
| TTC at Nashville                 | 1   |
| TTC at Paris                     | 0   |
| <b>TOTAL</b>                     | <b>2</b>  |